



Assistant Commandant – Surface Program Executive Officer (CG-SEA)

CG-SEA-E/Surface Forces Logistics Center- CG Yard

Brief for: NSRP Technologies Joint Panel CG Yard Overview



Captain Emily Tharp
Commanding Officer – CG Yard

Date: June 23 2026





Agenda

CG Yard: Preparing for the next century of ship repair

- CG Yard Business Lines – Pivot to meet Industry gaps and strategic capability
- Coast Guard – Modern Fleet larger and more complex
- Organic Industrial Base – CG Shipyard Infrastructure Optimization Plan



CG Yard

Service to the Fleet Since 1899



Workforce: 628 Total

12 Trade Shops
425 Working Capital Fund Producers
129 WCF Support Services & Managers
65 Active Duty Military, 17 Reservists

**Working Capital Fund:
\$125M Annual Operating Budget
Full-Service Shipyard**

Primary Functions:

1. Renovation Projects (ISVS)
2. Recurring & Emergency Availabilities
3. Remanufacturing & Repairables
4. Detailed Design & Engineering
5. Base Support for 13 Tenant Units

[Yard Shiplift Video](#)



Assistant Commandant – Surface
Program Executive Officer (CG-SEA)

Business Line: Vessel Renovation

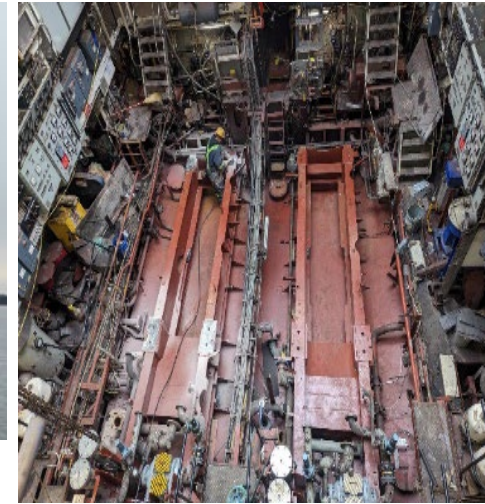


In Service Vessel Sustainment Project: Perform Service Life Extension Projects (SLEP) and Major Maintenance Availabilities (MMA) on select cutter classes

225' WLB MMA – Complete July 2025



270' WMEC SLEP – In Progress



175' WLM MMA – In Progress



418' WMSL MMA - Targeted FY31 Start



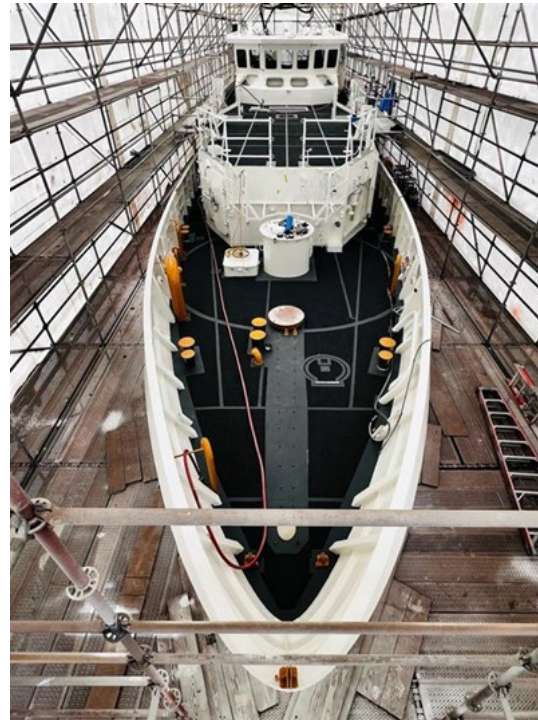
Assistant Commandant – Surface
Program Executive Officer (CG-SEA)

Business Line: Patrol Boat RDAP



Patrol Boat Recurring Depot Availability Program (RDAP):

- 87' RDAP w/ crew rotation saved \$2M/yr in op costs; phased out in FY24
- FRC RDAP w/ crew rotation expected to save \$8M/yr
- FRC RDAP Facility construction completed Q2 FY26



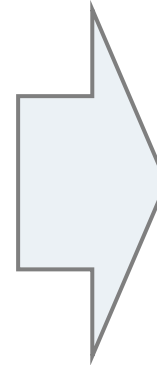
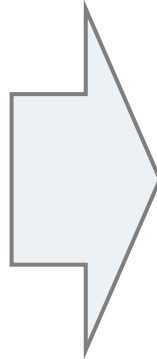
Assistant Commandant – Surface
Program Executive Officer (CG-SEA)

Business Line: Foreign Military Sales



As of Dec 2025, CGY supported the reactivation, repair, & transfer of 46 ex-CG cutters:

24 – 87’ Coastal Patrol Boats and 16 – 110’ Patrol Boats and 6 – 210’ MEC

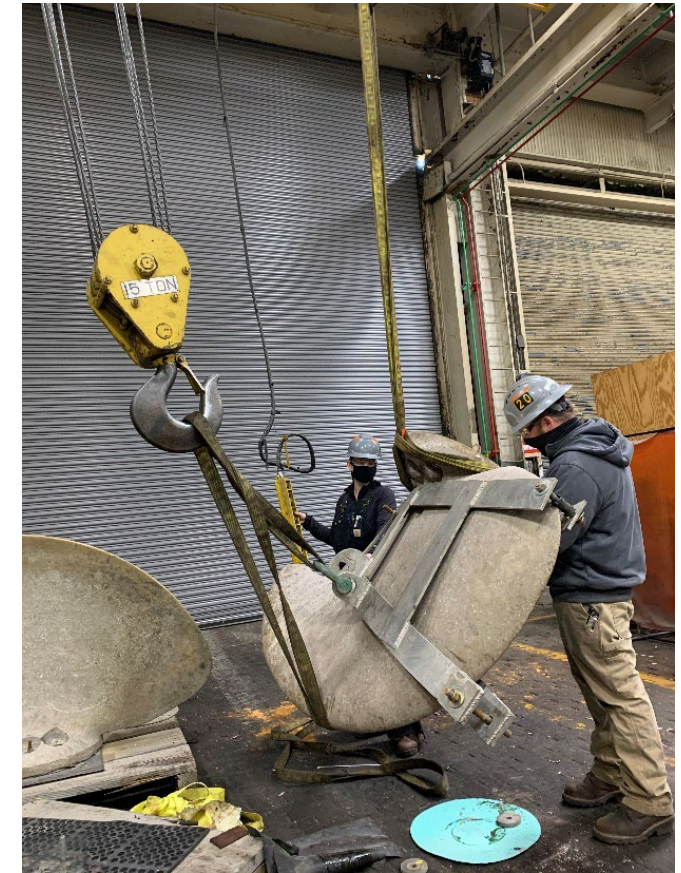


Assistant Commandant – Surface
Program Executive Officer (CG-SEA)

Business Line: Component Overhaul



In Shop and On-the-Road: Manufacture and repair CG-unique parts for CG cutters and boats; overhaul gun weapons systems, electronics & other cutter systems



Assistant Commandant – Surface
Program Executive Officer (CG-SEA)

Business Line: Other Government Agency



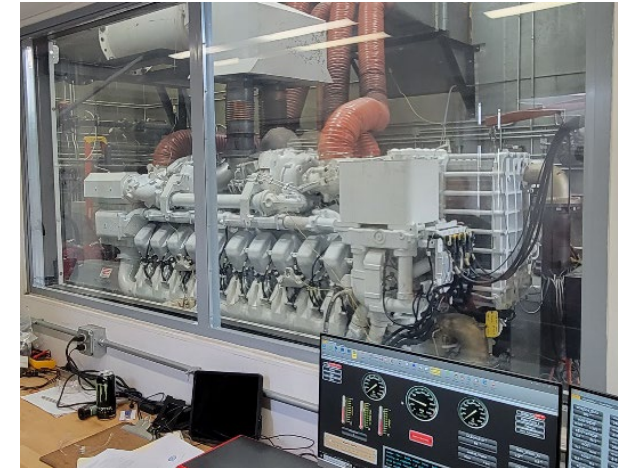
USNA 676 Class YP Service Life Extension Project

- Six year, \$31M program,
 - 9 hulls (2017 – 2023)
- SLEP: \$3.9M per hull/10 mths
 - to #3.1M per hull/7 mths
- CG Yard repaired major latent defects on 2 non CGY SLEPed YPs, towed to CGY in February 2023



LUSV-MTU 16V4000 720hour Test

- **26Jun:** Start 100hr test
- **24Jul:** Test Readiness Review
- **31Jul:** Start 720hr test
- **26Sep:** Test Complete



Success / Challenges Overcome

- 1st of 6 teams to commence LUSV test
- Only in-service new engine involved in test
- CG Yard overcame supply chain issues via:
 - Def Production Act prioritization from suppliers
 - Existing IDIQ contracts
 - Xfr/front deep insurance spares from OVHL production



CG Yard Strengths



Working Capital Fund (WCF)* (Title 14 U. S. Code, Section 939)

- Expenses are covered by revenue generated by work
- CG Yard functions as a “not for profit” business

***Not authorized to use WCF to fund infrastructure/facility improvements.**

Competitive Edge

- **People-** Fourth and fifth generation employees
- **People-** Deep organic Technical Expertise with extensive knowledge
- Co-location with SFLC’s \$1B Inventory Control Point
- Contracting timelines

Planning Yard Engineering

- Detail design & Updated Drawings

Work Load Forecasting

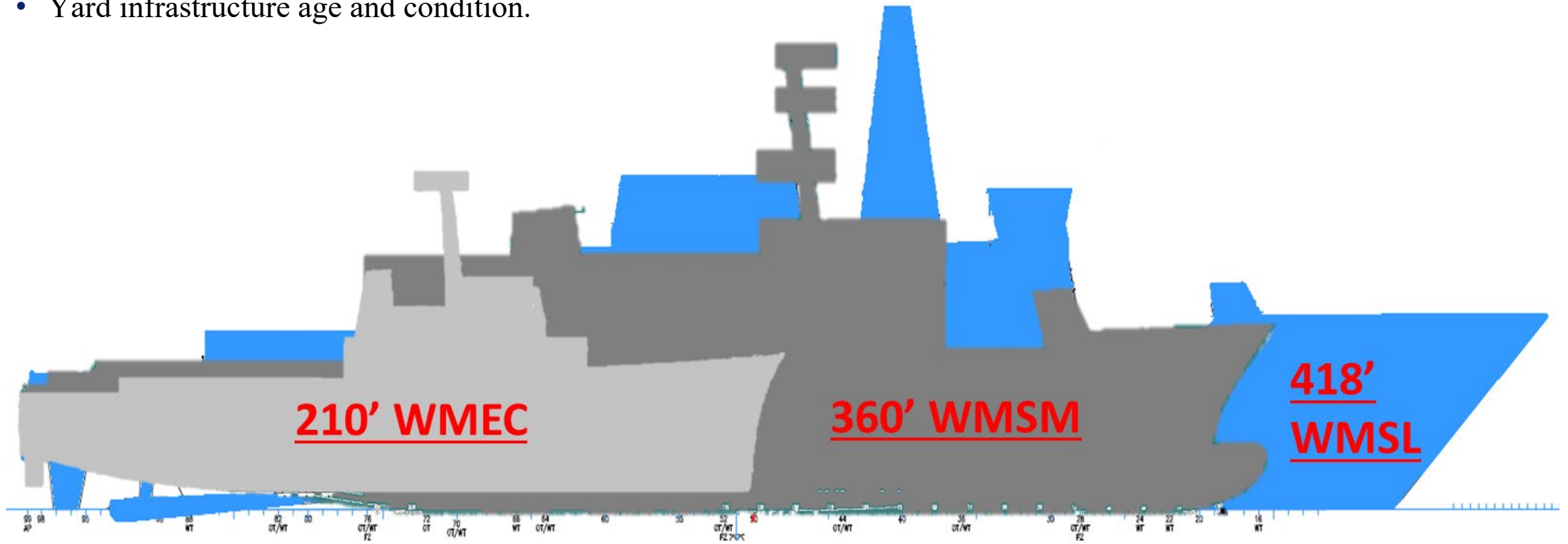
- Surge capacity to meet CG / DHS / OGA needs
- Out-year planning 14 years into future



Future Fleet Comparison: Larger & more complex



- Coast Guard is amidst the largest fleet recapitalization in a generation.
- FD28 Investments accelerating asset delivery.
- Yard infrastructure age and condition.



The Coast Guard's Maritime Industrial Base Challenge



Commercial Shipyard Industrial Capacity

- The repair base for vessels greater than 400 feet in length includes 22 shipyards with drydocking capability and 25 additional shipyards with topside repair capability. (White House Maritime Action Plan Feb 2026)

Increasing Competition for Commercial Dry Docks

- Expanding U.S. Navy fleet size
- Smaller ship repair yards are not making large capital investments

Future Service Needs

- Dry docking capacity for 360' WMSM & 418' WMSL
- Emergency dry docking capacity
- 418' WMSL MMA starting by 2031

Upskilling & Retaining a Skilled Industrial Workforce

- Growing & developing a workforce while keeping projects on schedule
- WWII era facilities and technological infrastructure at the Yard contribute to industrial process inefficiencies and impact workforce retention
- Investment in digital shipyard infrastructure will increase project efficiency



Shipyard Infrastructure Optimization Plan (SIOP) & Major Cutter Ship handling Capability (MCSC)



- Comprehensive recap plan to align CG Yard capabilities with future fleet needs
- Transforms CG Yard from WWII era shipbuilding Yard to modern ship renovation and repair facility
- \$500M Reconciliation:
 - Three interdependent lines of effort: Waterfront (USACE), Cranes (USACE), and Floating Drydock (FDD)



Major Cutter Ship-handling (MCSC) – (Funded) Implementation Plan (2025 Reconciliation Bill)



Major Cutter Ship-handling Capability

Scope / Elements	Partner and Execution Strategy
Dredging & channel deepening	USACE
High-capacity Floating Drydock (FDD)	FDD - 3rd party procurement
Piers 2 & 3	Waterfront - USACE Design-2-Build
South Wharf	Waterfront - USACE Design-2-Build
Demo Bldg 68	Waterfront - USACE Design-2-Build
Electrical Loop	Electrical - local execution
Supporting Infrastructure projects	Continuity of Operations - Pier 1 Crane & Parking lot - local execution

**Delivery of
Capability
Q2 FY30**



Artist rendering of FDD

Budget: \$500M in the Reconciliation Bill



**Assistant Commandant – Surface
Program Executive Officer (CG-SEA)**

Shipyards Infrastructure Optimization Plan (SIOP) Implementation Plan



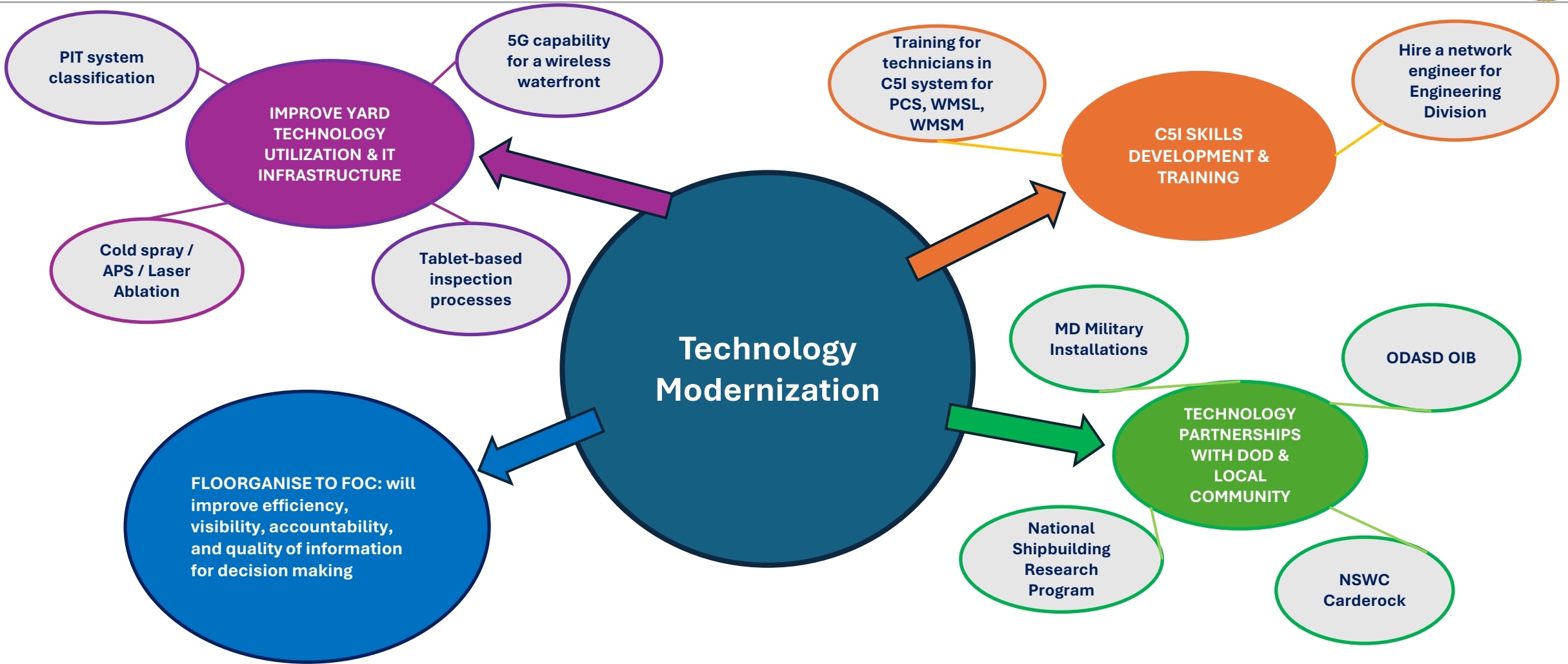
Shipyards Infrastructure Optimization Plan

Scope / Elements	Partner and Execution Strategy
Redevelop - Site 1	Upland buildings - Design-Build
Redevelop - Site 2 & 3	Upland buildings - Design-Build
Reuse - Bldg 8/8A/58/58A	Upland buildings - Design-Build
Reuse - Bldg 78/80	Upland buildings - Design-Build
Pier 1	Waterfront - Design-Build
Utilities	Local execution
Major Cutter Shiplift	Waterfront - Design-Build

Estimate: \$1 Billion



Technology Roadmap





Expanded Curtis Creek Footprint

- CG ceased operating four-210s and eleven – 87s to meet personnel shortages CG wide (2024). Assets pend reactivation or final disposition, with a few previously scheduled decommissionings.
- Army Reserve Depot –Army granted permission to CG to use the waterfront space.

CG Yard - Utility Energy Service Contract (UESC)



- Public Private Partnership with local electrical utility provider - BGE
- 22-year performance period

	Energy Resilience	Installation of microgrid & solar panels, with island mode, will enable continuity of ship repair operations if electrical power grid goes down.
	Energy Reliability	Seamless transition to island operation. (No more shutting down of heat to production buildings during periods of high electrical demand in the local area.)
	Energy Efficiency	Recap aged steam system with boilers & ground source heat pumps to enhance reliability & reduce significant ongoing energy losses. Recap electrical distribution systems for reliability & reduce energy losses.
	Cogen Plant OMR&R	Contract includes planned and unplanned Cogenerator Plant maintenance and engine overhauls to optimize performance through life of the contract.
	Cost Savings	Anticipate more than \$100M in savings over the course of the contract. Additional savings of 48,000 MMBTU of energy, 957,000 gallons of water, and reduced emissions by 18,700 tons of CO2.



Questions



CG Yard - 127 Years of
Service to Our Nation



Assistant Commandant – Surface
Program Executive Officer (CG-SEA)



Backup Slides