



Locate your digital assets using  
AI-powered visual search technology



## Background

- Ships and other big machinery are constructed from hundreds of thousands of parts
- The parts are either designed and manufactured or sourced and purchased through processes that are often disjointed
- Before making a purchase, engineers must perform extensive research to identify parts that meet the ship design requirements



## The Problem

- The same parts may have been used in multiple areas of a ship, or even on other vessels, but the design engineer does not have visibility to this information
- Inability to search through large siloed data repositories and libraries due to inadequate search tools
- A wide variety of file types and formats exist (3D models, 2D drawings, images, PDFs & text)



- Wasted time spent sourcing parts
- Logistics and financial loss in creating, storing and managing duplicate parts

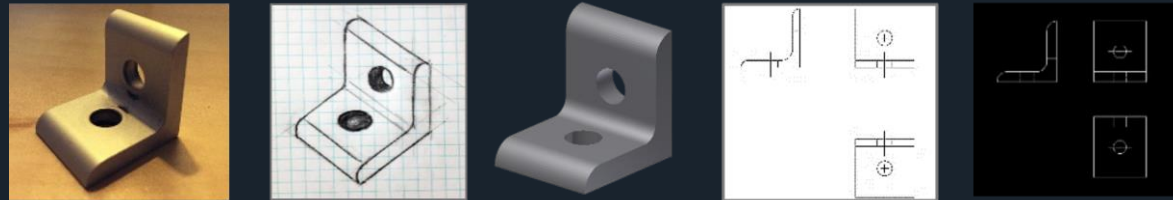
## Objective

### Integrate visual search to...

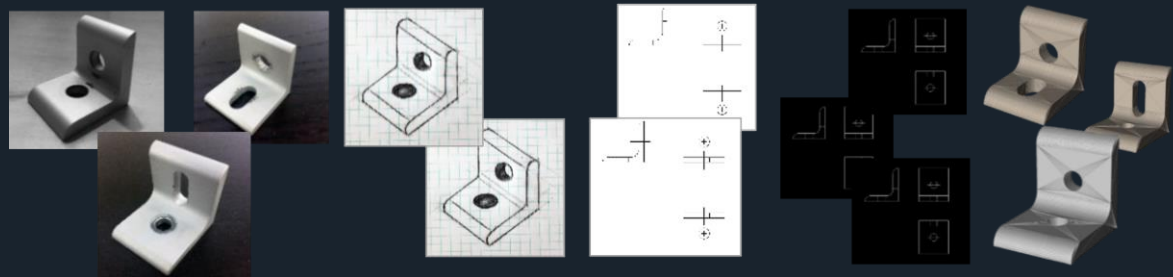
- Reduce the amount of time it takes for engineers to research, identify, select and purchase parts
- Reduce the amount of labor associated with creating a new part
- Reduce the number of duplicate parts
- Provide visibility to approved parts to lower costs throughout the lifecycle of a part
- Improve communication across different sectors of your organization
- Overcome the limitation of text-based search no matter the type of data you are searching for
- Create efficiency in purchasing by grouping parts by shape

# VizSeek is a cross-platform, cross-file-type search engine.

The search input file can be any of these files...

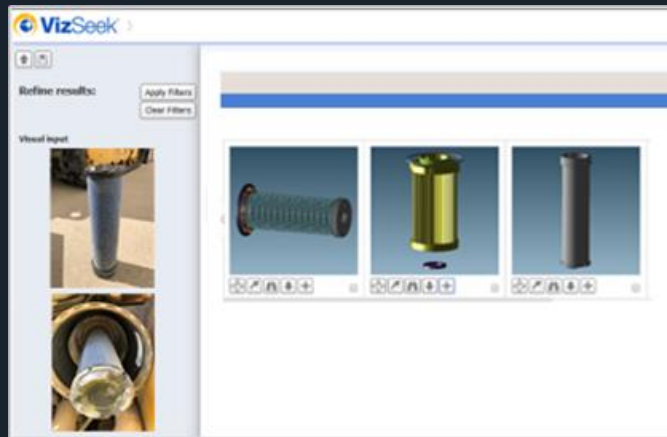


to find any of these database files



## Real-time searching

VizSeek can find parts saved in your catalogs, folders and CAD system with a simple drag and drop of a visual input such as a photo, PDF, hand sketch, 2D drawing or 3D model.



Search input example (photo)



Best Match - 736a-filter (3D model)

## Part clustering

With visual search, parts can be clustered into groups based on similar geometry & similar attributes. The software allows the user to specify the amount of contribution for each attribute when clustering, by assigning a weight to each of them.


### Update Attribute Weights

Save Save and Close

Attribute	Weight (0.0-1.0, where 0.0 means no contribution to the classification and 1.0 means the attribute values within a class have to be the exact same)
align critical	<input type="text" value="0"/>
angle	<input type="text" value="0"/>
arfc	<input type="text" value="0"/>
assy	<input type="text" value="0"/>
cage code	<input type="text" value="0"/>
catalog no_	<input type="text" value="0"/>
cpoint	<input type="text" value="0"/>
chgauthno	<input type="text" value="0"/>
class	<input type="text" value="0"/>
clear opening	<input type="text" value="0"/>
connection-elec	<input type="text" value="0"/>
connection-hvac	<input type="text" value="0"/>
connection-pipe	<input type="text" value="0"/>

#### GroupId: 8

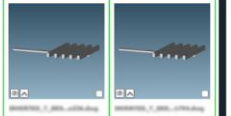
Subgroup: 0 (2 Item) [ATTRIBUTES MATCH]



Part ID	Description
TOP_22086_28894_4295A.dwg	TOP_22086_28894_4295A.dwg
TOP_22086_28894_4295B.dwg	TOP_22086_28894_4295B.dwg

#### GroupId: 26

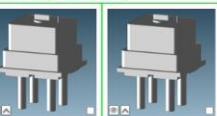
Subgroup: 0 (2 Item) [ATTRIBUTES MATCH]



Part ID	Description
TOP_22086_28894_4295A.dwg	TOP_22086_28894_4295A.dwg
TOP_22086_28894_4295B.dwg	TOP_22086_28894_4295B.dwg


#### GroupId: 48

Subgroup: 0 (2 Item) [ATTRIBUTES MATCH]



Part ID	Description
TOP_22086_28894_4295A.dwg	TOP_22086_28894_4295A.dwg
TOP_22086_28894_4295B.dwg	TOP_22086_28894_4295B.dwg

NSRP All Panel Meeting 2023



7



## You can't type a shape.

Professionals in the digital age spend 19% of their time looking for or sorting data.  
That is a lost workday every week for every employee.

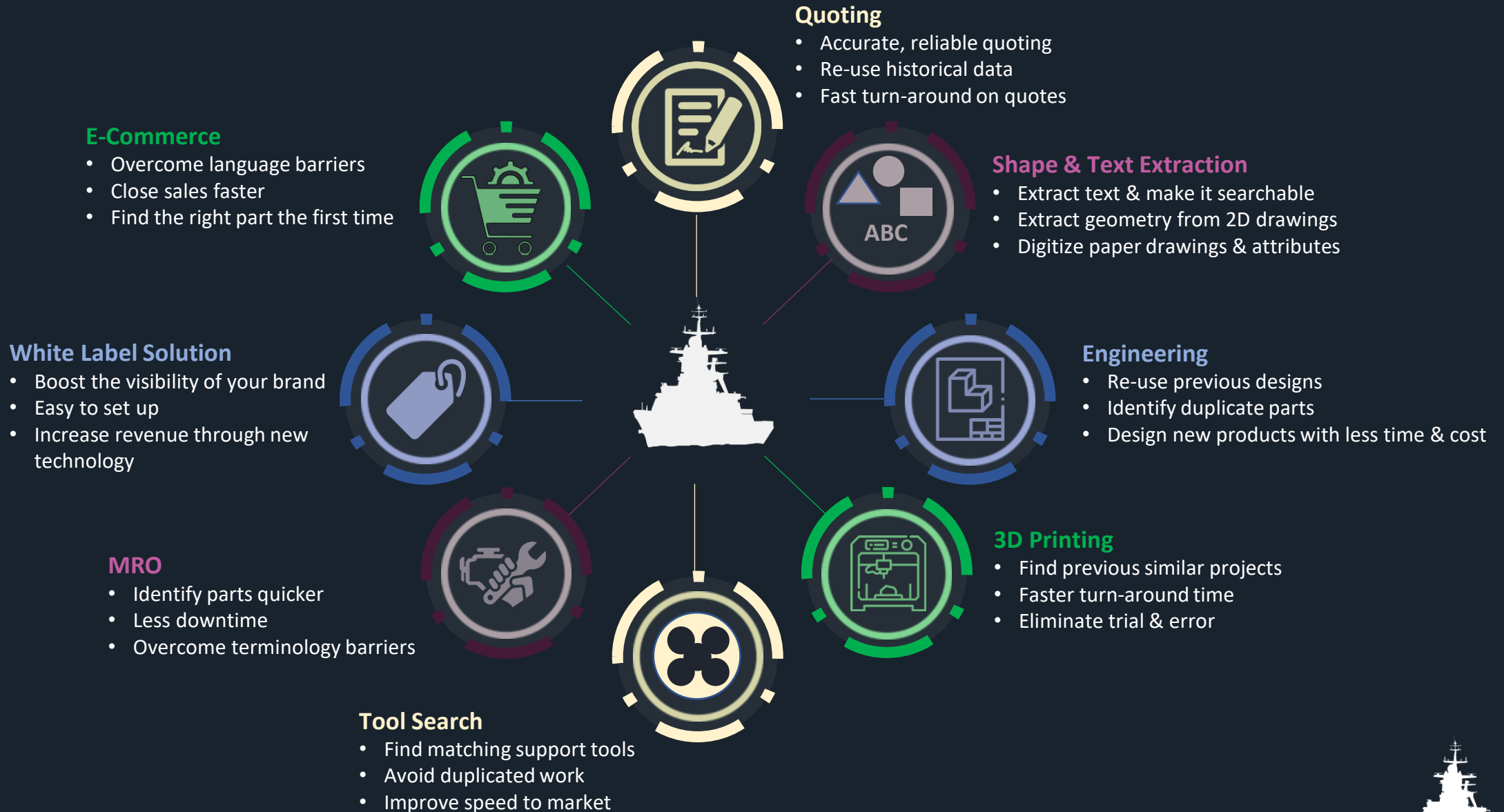
Visual search technology instantly puts needed files at your fingertips.



Companies that embrace this technology have a significant advantage over their competition and will see an increase in their profit margins almost immediately.



# Here are some use case examples where visual search can help solve problems





**ROB HILL**, Application Engineer

[rob.hill@vizseek.com](mailto:rob.hill@vizseek.com)

[www.vizseek.com](http://www.vizseek.com)

(765.586.6707)

Thank you for your interest!

