

Successfully reusing
early-phase design data

ExpressMarine Integration

Pat David SSIUSA

Business Technology Panel Meeting

MAY 21, 2020 - Virtual





VT Halter Marine

A company of VT Systems



EXPRESSMARINE

Parametric 3D Structural Modeling for Weight Estimation

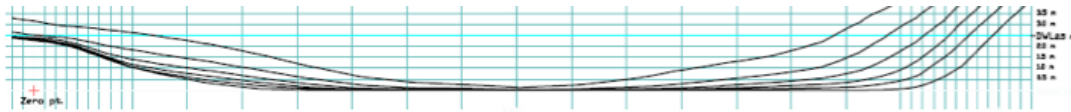


EnterprisePlatform

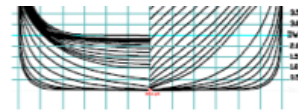
SHIPCONSTRUCTOR®

OBJECTIVE

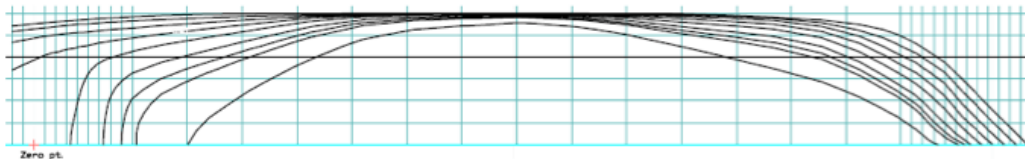
Pass rich, early phase structure-model to a detail-engineering production tool without losing properties and metadata (early stage design into detail production models).



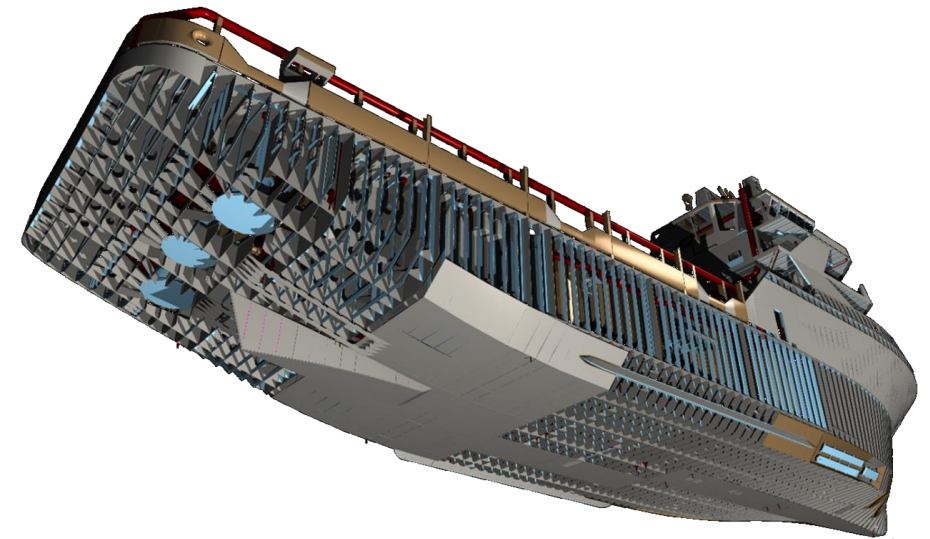
PROFILE



HALF-BREATH PLAN

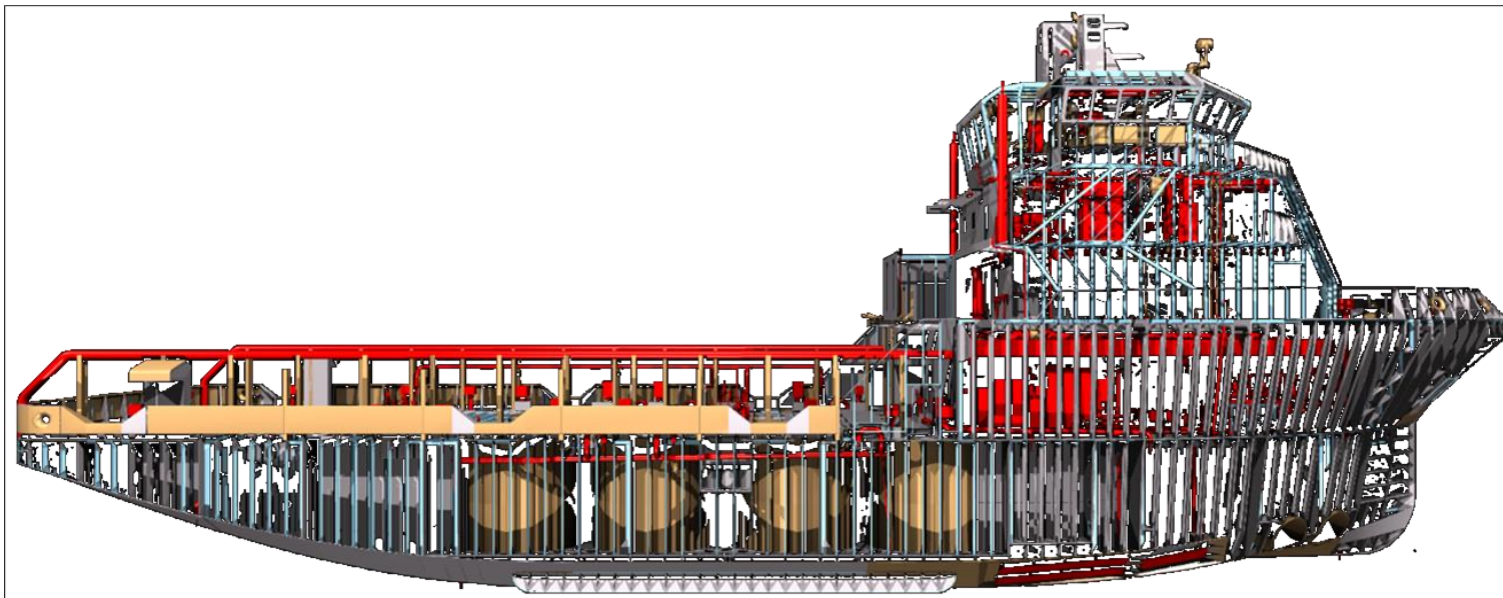
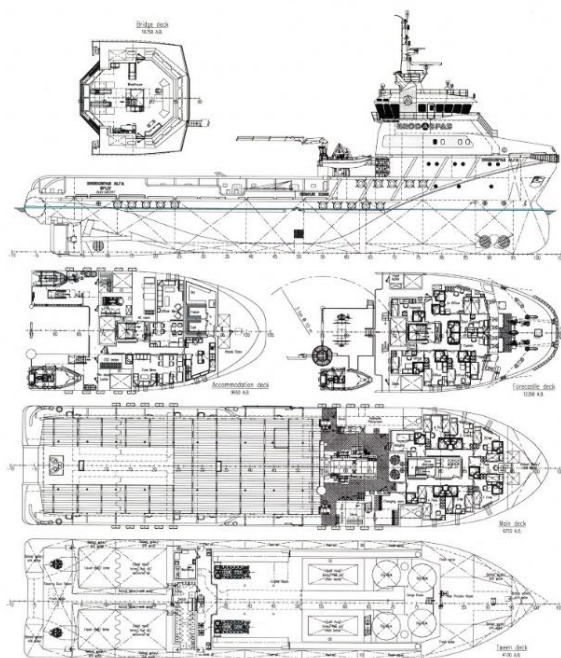


HALF-BREATH PLAN

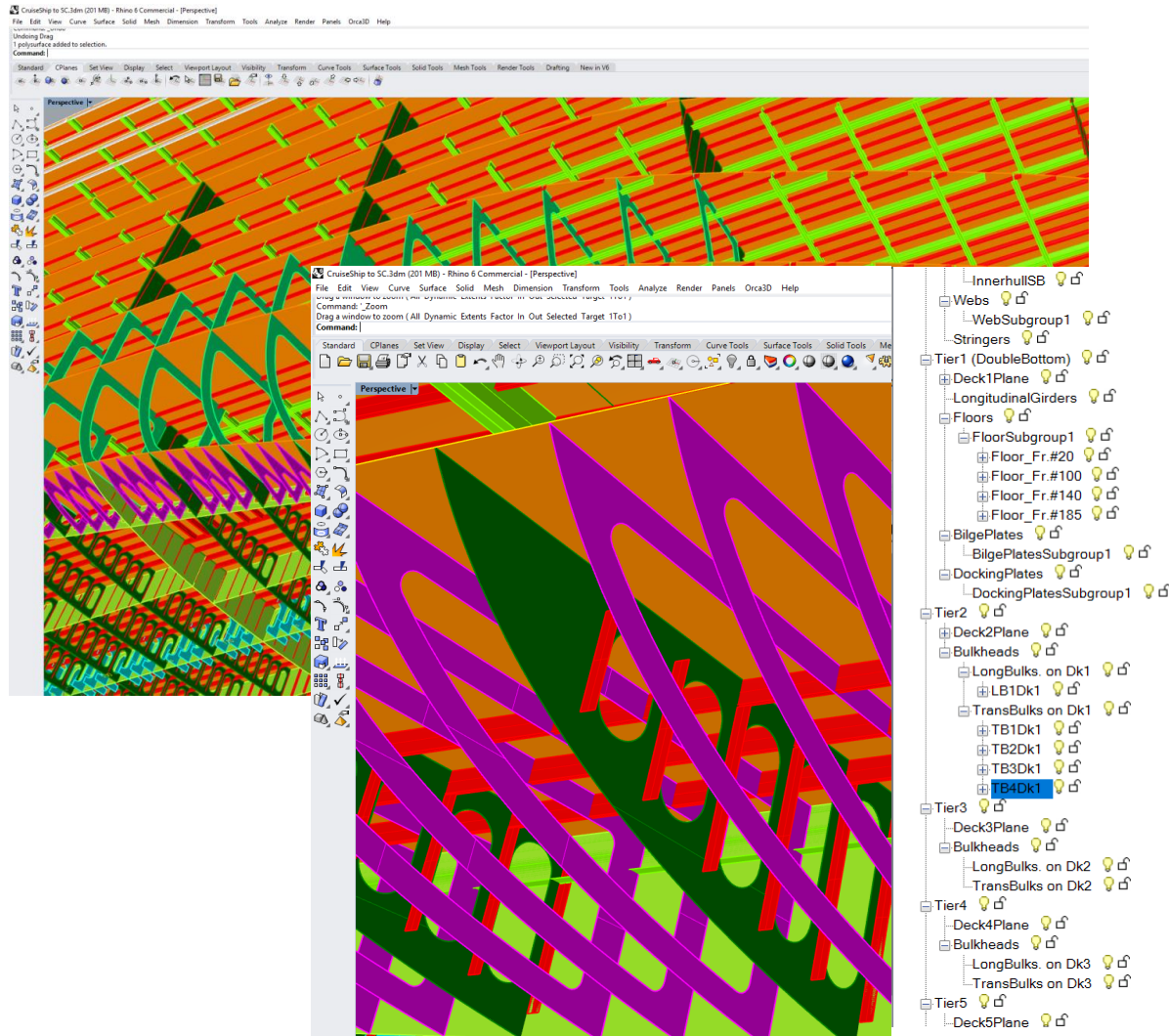


GOAL

Export the **ExpressMarine** model to **ShipConstructor** so the model appears as if it was built there natively



EXPRESSMARINE

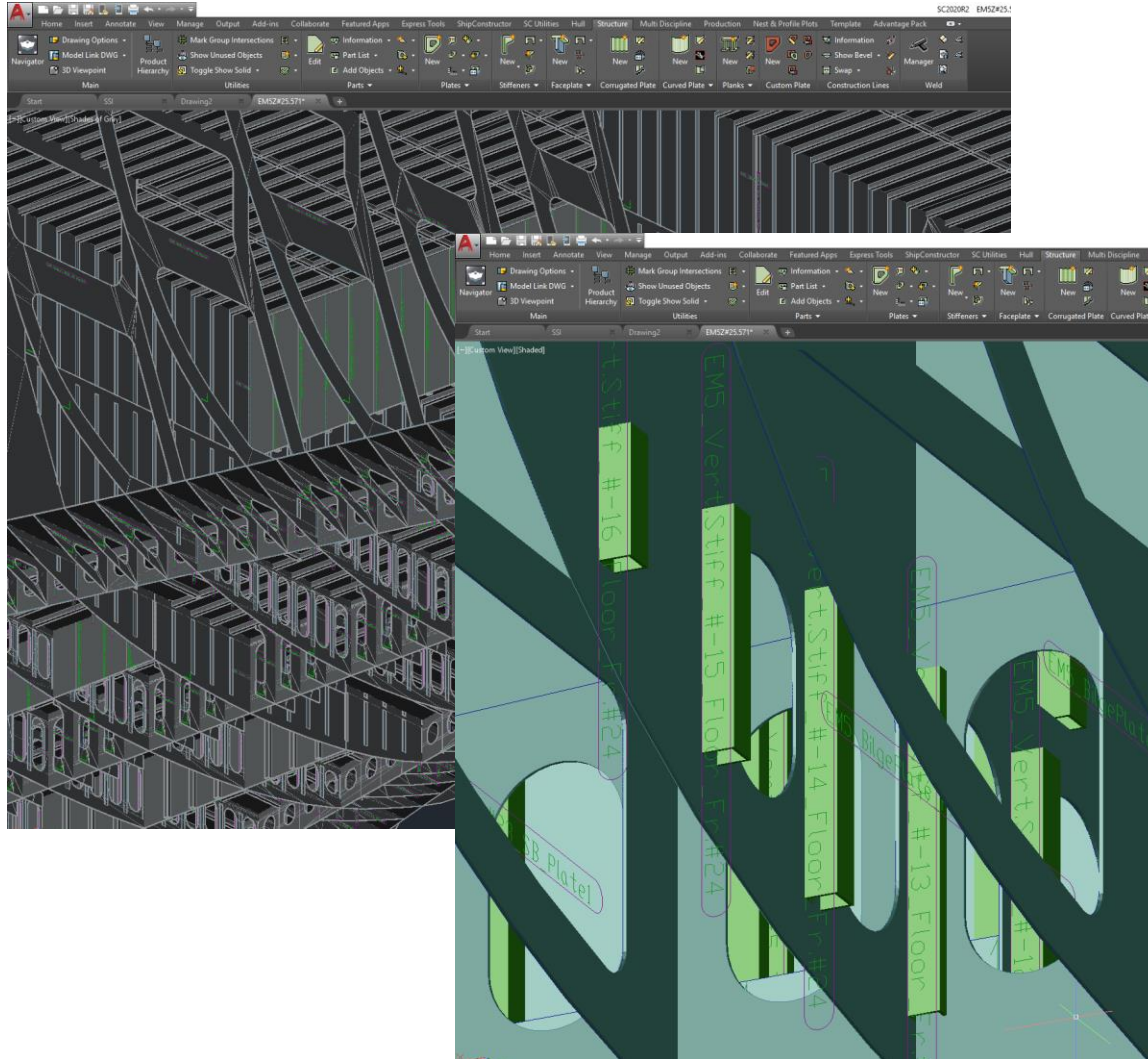


ExpressMarine is a plug-in for **Rhino3D** that enables designers to rapidly build-up parametric 3D models of marine structures.

SOLUTION



Leverage **SSI Genesis Connector** to enable *automatic creation of ShipConstructor parts complete with relevant properties and metadata.*



ShipConstructor is a complete detail-design engineering tool with a deeply integrated set of data and metadata.

SOLUTION



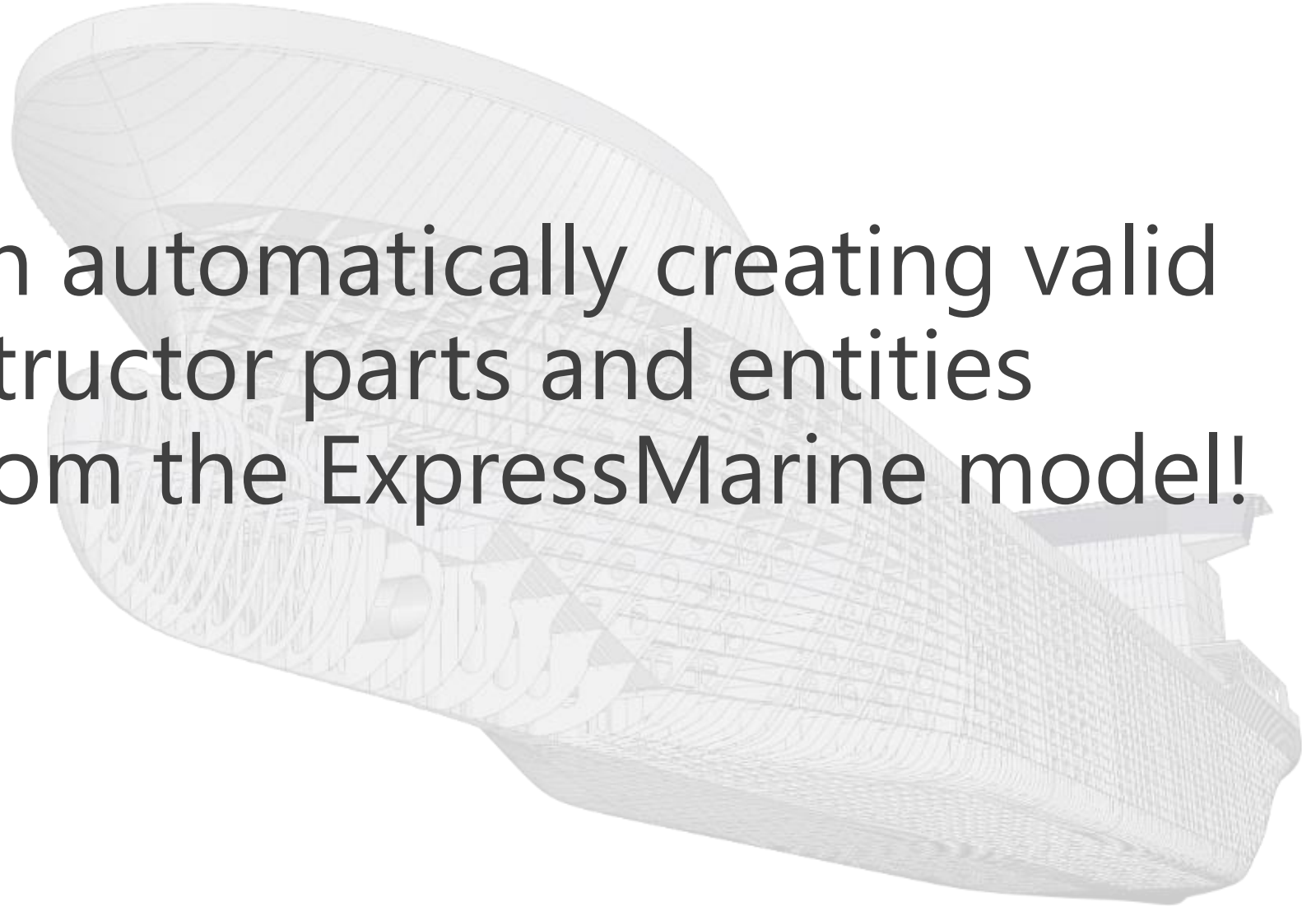
The **SSI Genesis Creation Framework** is an Application Programming Interface (API) for directly reading/writing to **ShipConstructor** projects.

SOLUTION

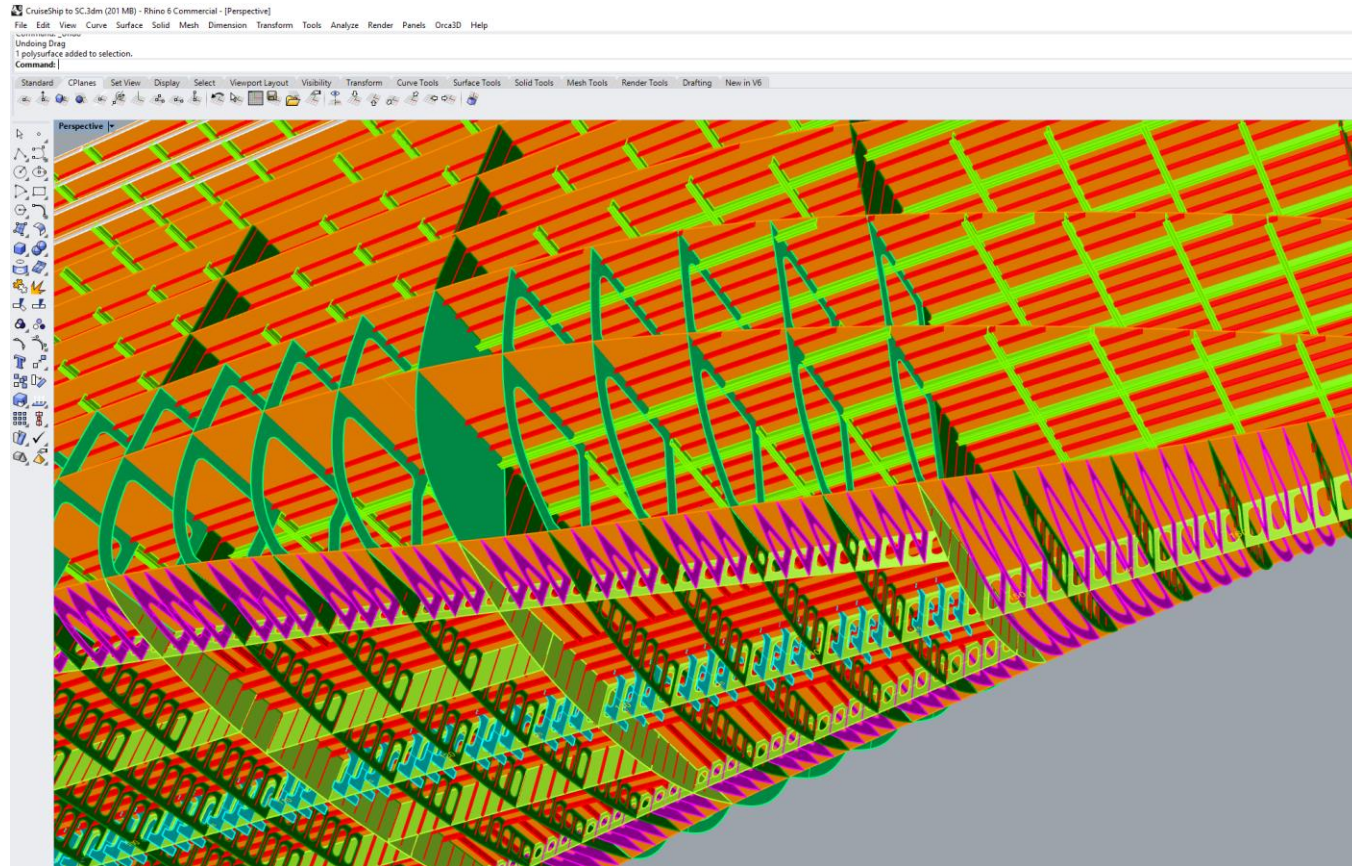


RESULTS

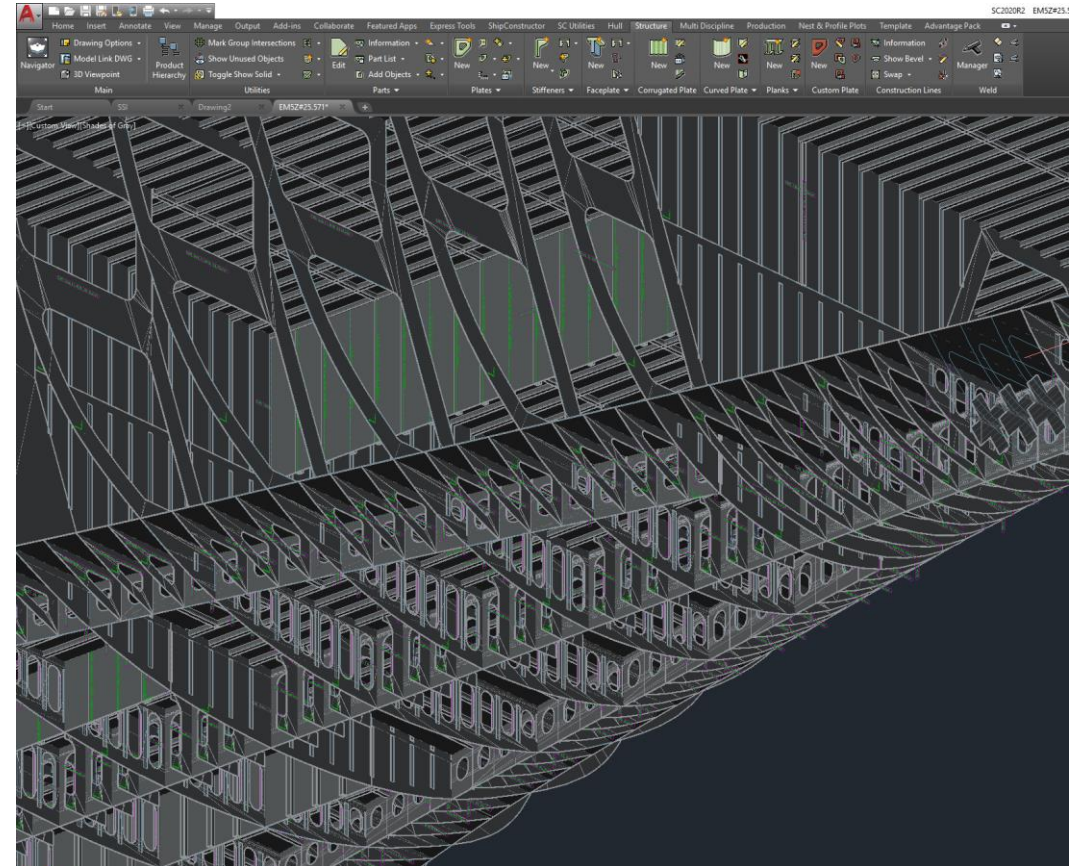
Success in automatically creating valid ShipConstructor parts and entities directly from the ExpressMarine model!



RESULTS

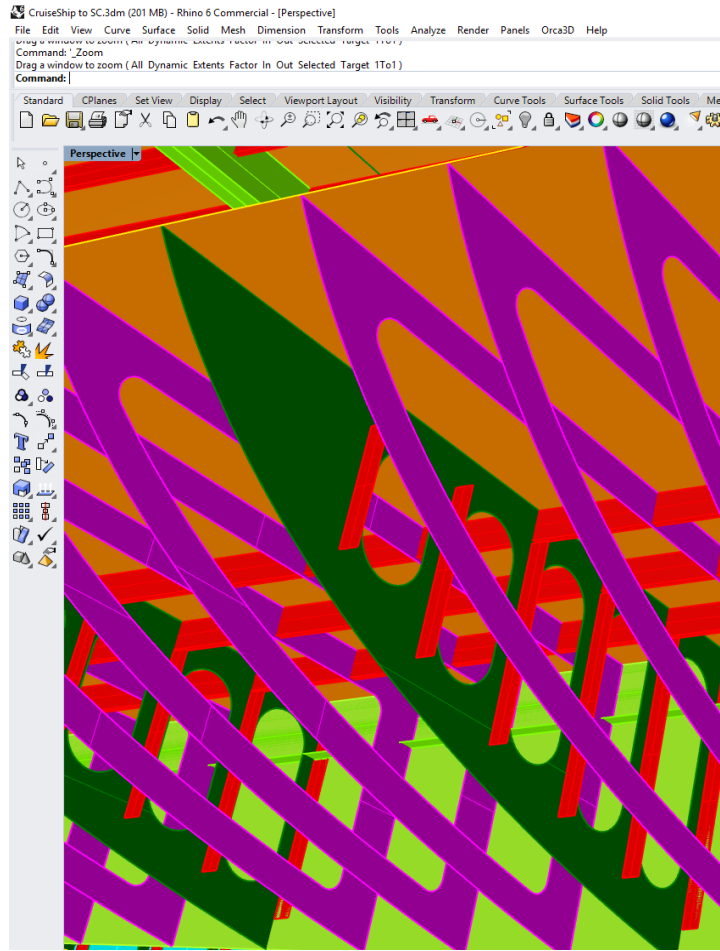


EXPRESSMARINE

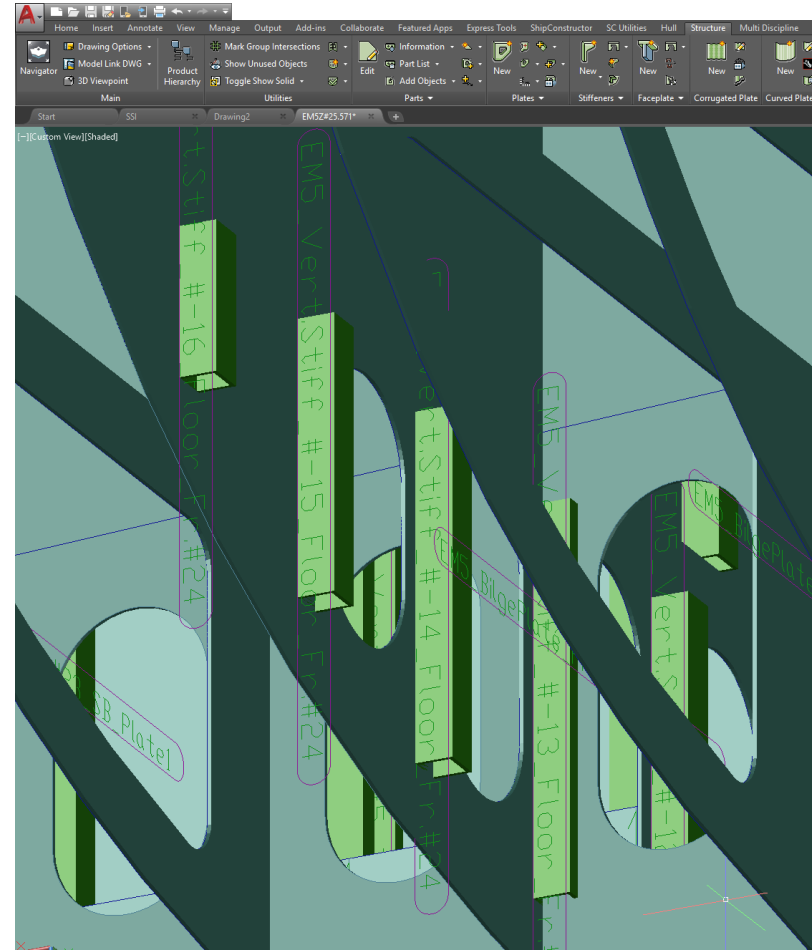


SHIPCONSTRUCTOR®

RESULTS



EXPRESSMARINE



TASKS - STATUS

- | | | |
|-----|---|--------------|
| ✓01 | Conduct Project Kick-off Meeting | |
| ✓02 | ExpressMarine Training for VTHM, SSI | |
| ✓03 | Investigate potential ExpressMarine to ShipConstructor data mapping | |
| ✓04 | Capture business processes and workflow (VTHM & Austal USA) | |
| ✓05 | Develop and test data integration from ExpressMarine to ShipConstructor | |
| ✓06 | Demonstrate successful data integration | |
| ✓07 | Conduct Final Workshop | (March 2020) |
| ✓08 | Develop Final Report | (April 2020) |

FINAL WORKSHOP

- | **Held March 19th, 2020**
- | **Two more follow-up webinars on April 2nd, 2020**

FINAL STATUS

ROI still demonstrates a 30:1 time savings vs. manually transitioning model

- ShipConstructor Modeling Times: **297 man hours**
 - Planar group & unit creation: 27 man hours
 - Hull module Work: 54 man hours
 - Structural modeling: 216 man hours
- ExpressMarine: **~10 man hours**

FINAL STATUS

Not simply a “*dumb*” geometry transfer

**Bi-directional interface –
ExpressMarine pulls data *directly*
from ShipConstructor database (API)**

FINAL STATUS

Final output identical to scratch-built ShipConstructor modelling

Feedback and project accelerated SSI Genesis Creation Framework development

FINAL STATUS

| Available NOW!

**| Project results available in
commercially released software**

| ExpressMarine3D.com

| SSI-Corporate.com

CONTACTS



Pat David

Patrick.David@ssi-corporate.com



Runar Aasen

runar@shipweight.com



Bruce Hays

bhays@shipweight.com

Questions?

NSRP@ati.org

