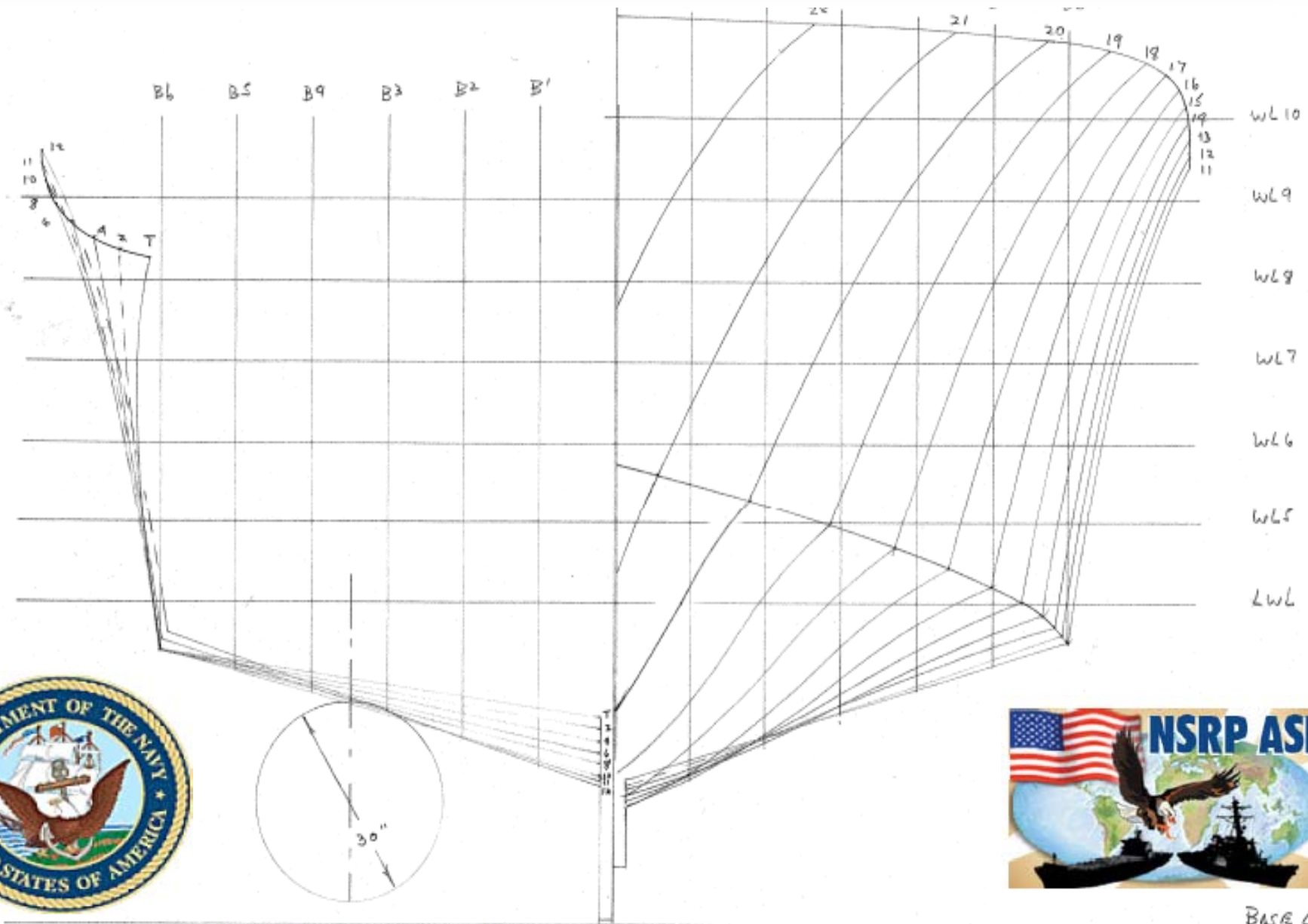
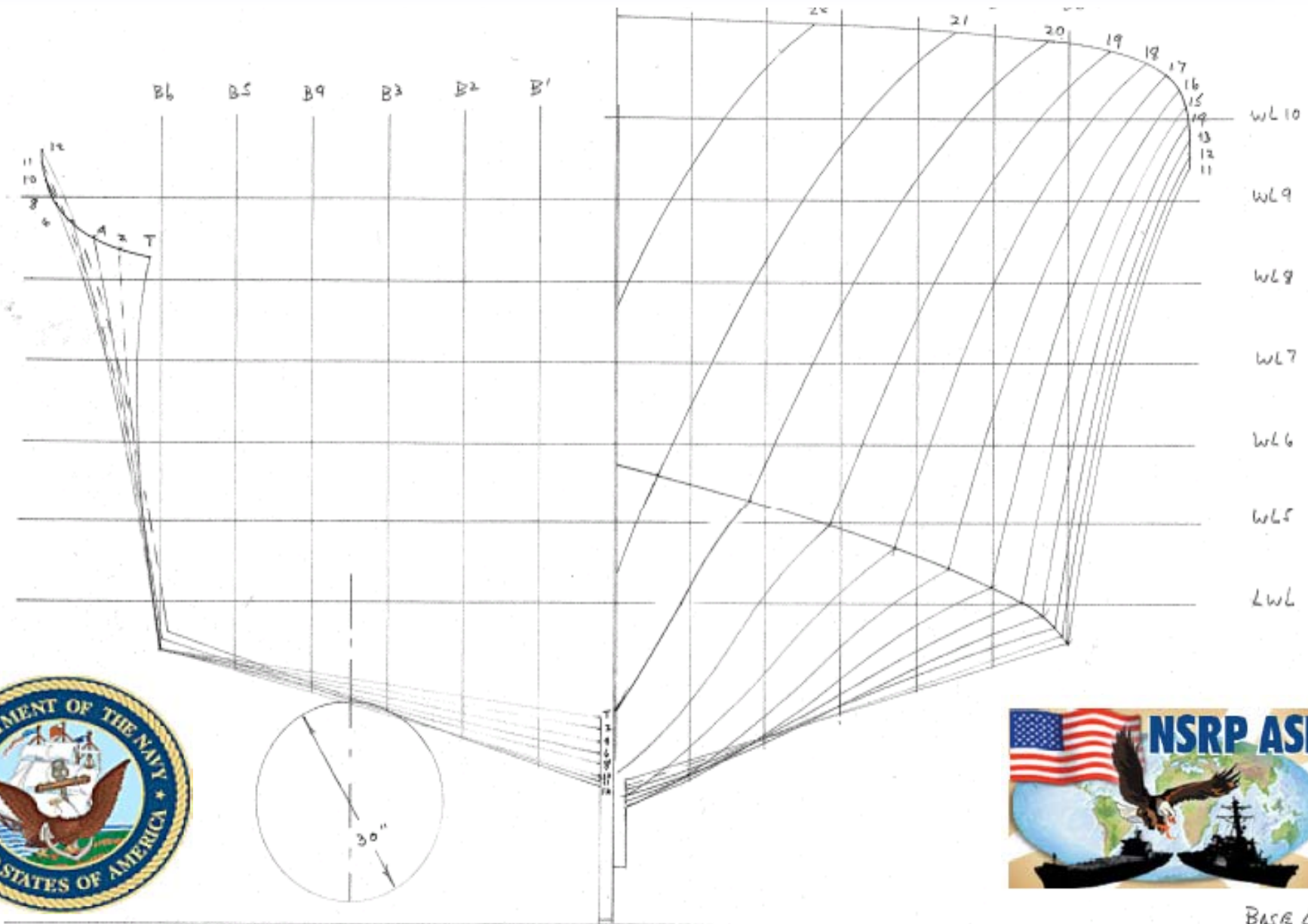


STSDEP III



Project Team





VT Halter Marine, Inc.

NORTHROP GRUMMAN

Ship Systems
Avondale Operations

MARINETTE MARINE
PROVEN PERFORMANCE IN THE MARINE INDUSTRY



Project Team



Naval Architects
& Marine Engineers



**Elliott Bay
Design Group**

Architectural & Engineering Services for the Marine Industry

ShipConstructor
Software Inc.

ShipConstructor
Software USA, Inc.



University of South Alabama

UNIVERSITY  WISCONSIN

MARINETTE

Autodesk

MURRAY & ASSOCIATES LLC
NAVAL ARCHITECTS MARINE ENGINEERS



 **BENDER**

WL 10

WL 9

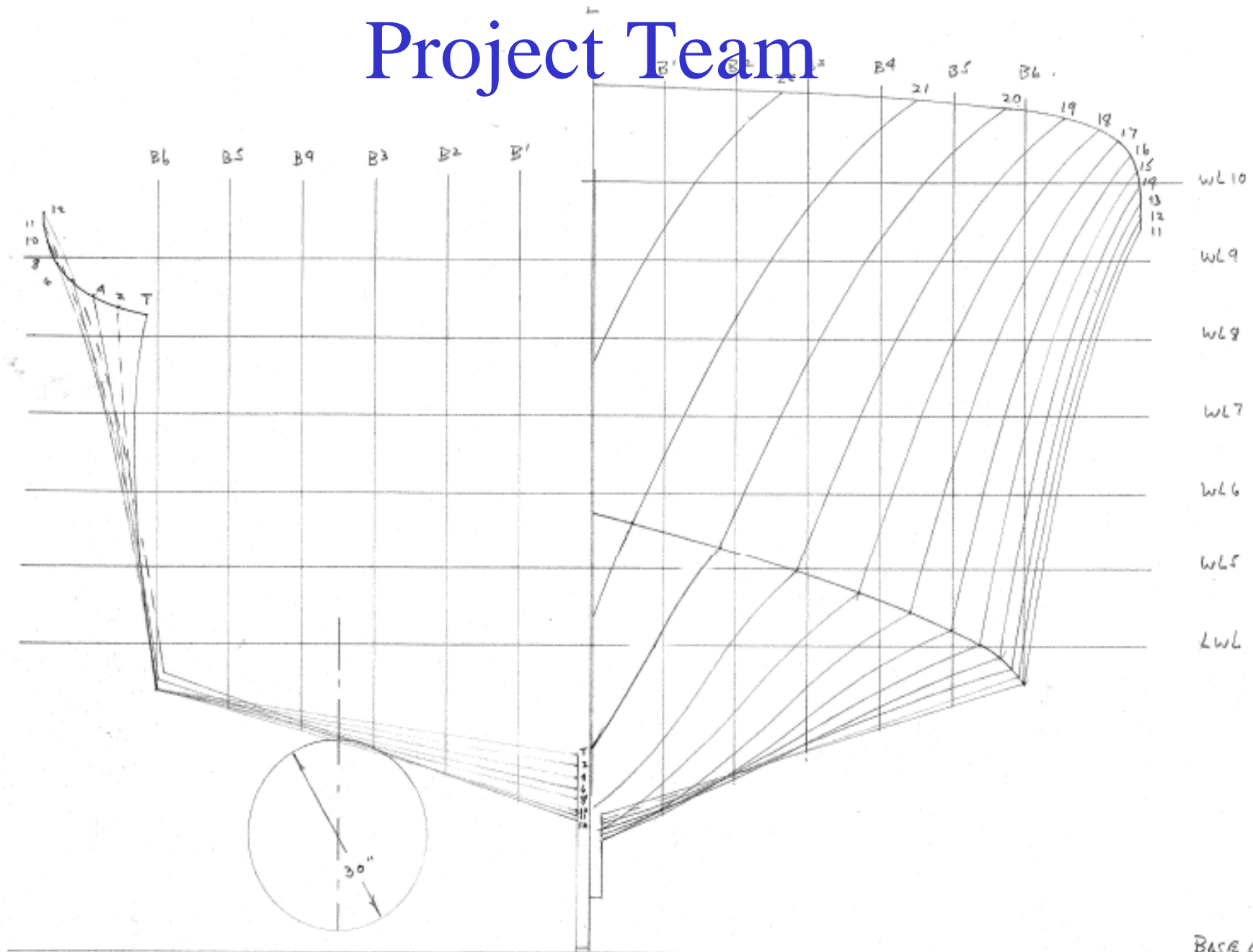
WL 6

WL 5

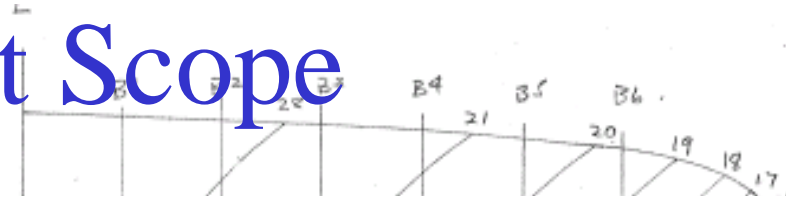
WL 4

Base Lin

Project Team

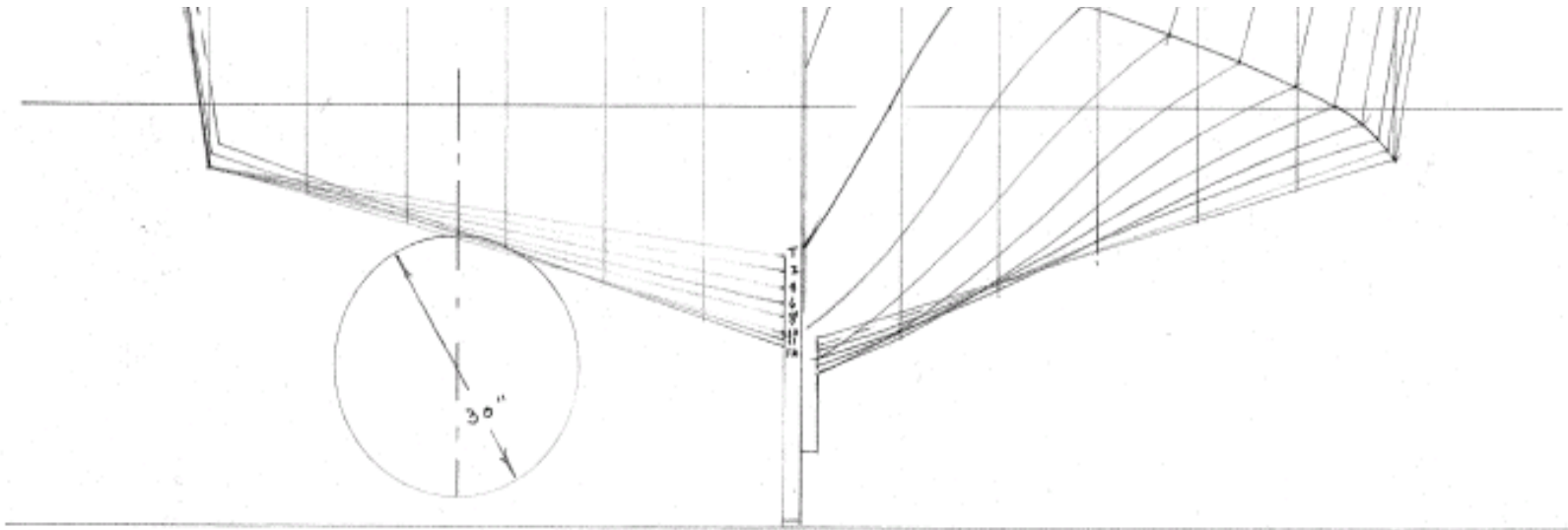


Project Scope



-Scope: This is the third Phase of a project that was originally proposed with 14 separate software development modules. The first and second Phases were partially funded, and a Phase II extension was funded to develop the specifications for Weld Planning and Detailed Electrical Design modules. This third Phase proceeds with the software development for weld planning and electrical design, as well as several of the previously proposed modules with modifications to account for changing demands and requirements over the past four years.

wL10
wL9
wL8
wL7
wL6
wL5
wL4



Base Lin

Statement of Work

- Develop an integrated Electrical Detail Design module for ShipConstructor based on the specifications developed in the STDEP Phase II Extension project. This task will be performed primarily by SSI developers in Victoria, BC. Art Anderson & Associates will provide direct support and ensure a smooth transition from the SEAPRO preliminary electrical design package to the detailed electrical design module. Quarterly reviews will be held with the project team. The project team will beta test incremental releases of the software and provide feedback to the development team. Specific sub-tasks to be completed are:
 1. Develop wireway and cable routing functionality
 2. Develop cable termination functionality
 3. Develop component features, libraries and database elements
 4. Develop reporting functions, features and formats
 5. Develop additional functionality per specification

WL 10

WL 9

WL 8

WL 7

WL 6

WL 5

WL 4

Base Lin

Electrical Module

Develop an integrated Electrical Detail Design module for ShipConstructor based on the specifications developed in the STDEP Phase II Extension project. This task will be performed primarily by SSI developers in Victoria, BC. Art Anderson & Associates will provide direct support and ensure a smooth transition from the SEAPRO preliminary electrical design package to the detailed electrical design module. Quarterly reviews will be held with the project team. The project team will beta test incremental releases of the software and provide feedback to the development team. Specific sub-tasks to be completed are:

1. Develop wireway and cable routing functionality
2. Develop cable termination functionality
3. Develop component features, libraries and database elements
4. Develop reporting functions, features and formats
5. Develop additional functionality per specification

WL 10

WL 9

WL 8

WL 7

WL 6

WL 5

WL 4

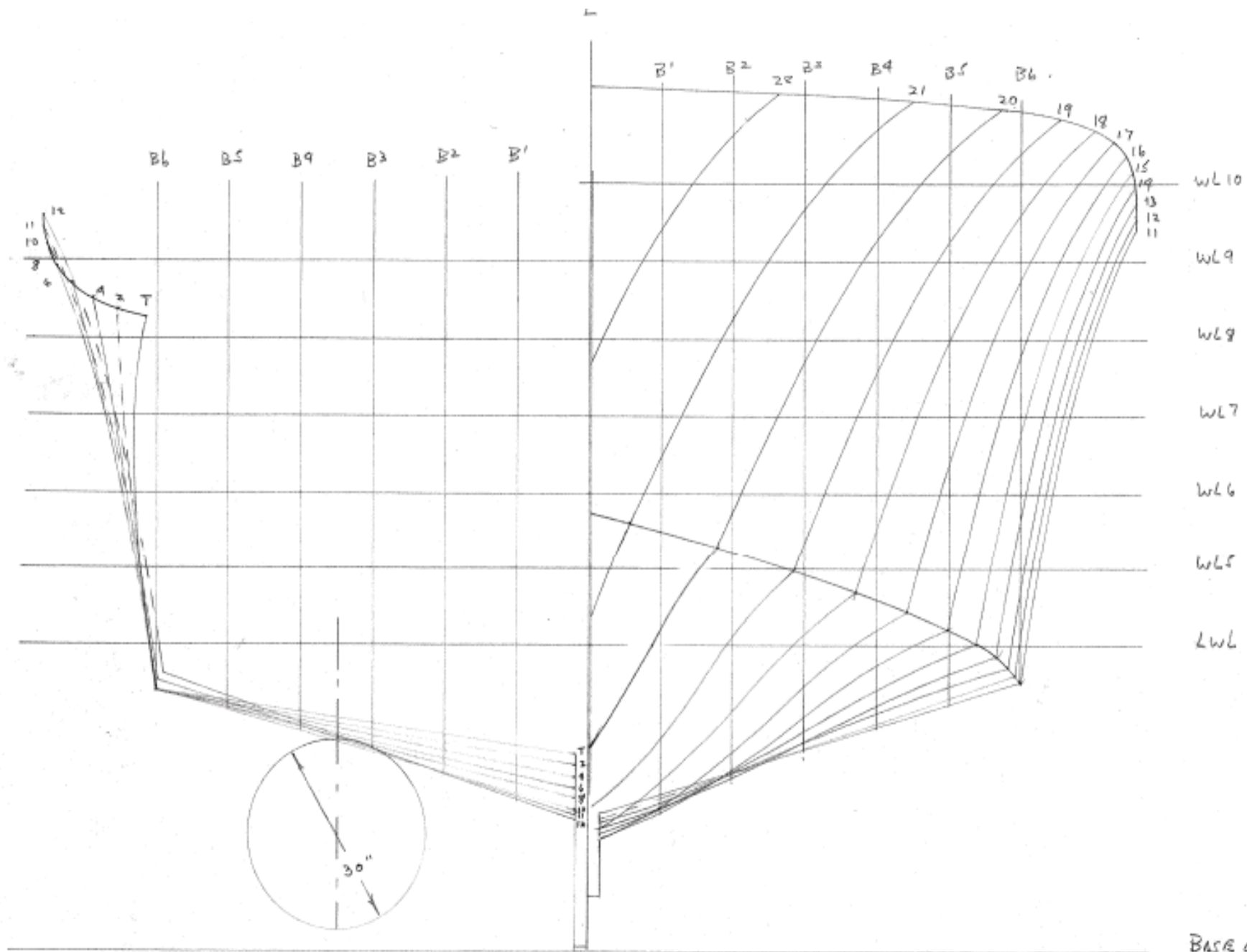
BASE L10

Weld Module

Development of a technical education and training course that will incorporate training in ShipConstructor as a Continuing Education offering at the University of

Wisconsin, Marinette and at the University of South Alabama. This task will primarily involve SSIUSA, SSI and the two University Continuing Education programs. The project team anticipates support from the Marine Institute of Memorial University of Newfoundland with Genoa Design, Int, participation. The task will be front loaded at the beginning of the project to develop the course curriculum and material, and then will focus on providing training to all team members to refine the curriculum. Specific subtasks include:

1. Develop a marine design course curriculum with detailed descriptions of the material to be covered in each element of the curriculum
2. Establish grading criteria
3. Develop and publish the course material including texts, handouts, presentations and tests
4. Install software and training material in computer classrooms at both Universities
5. Provide training to all project team members and refine course material based on feedback



BASE Lin