

# Robo Blast USA

Abrasive Blast And Vacuum System "ABAVS"

By Terry Hendren

503-303-0200

[roboblastusa@verizon.net](mailto:roboblastusa@verizon.net)

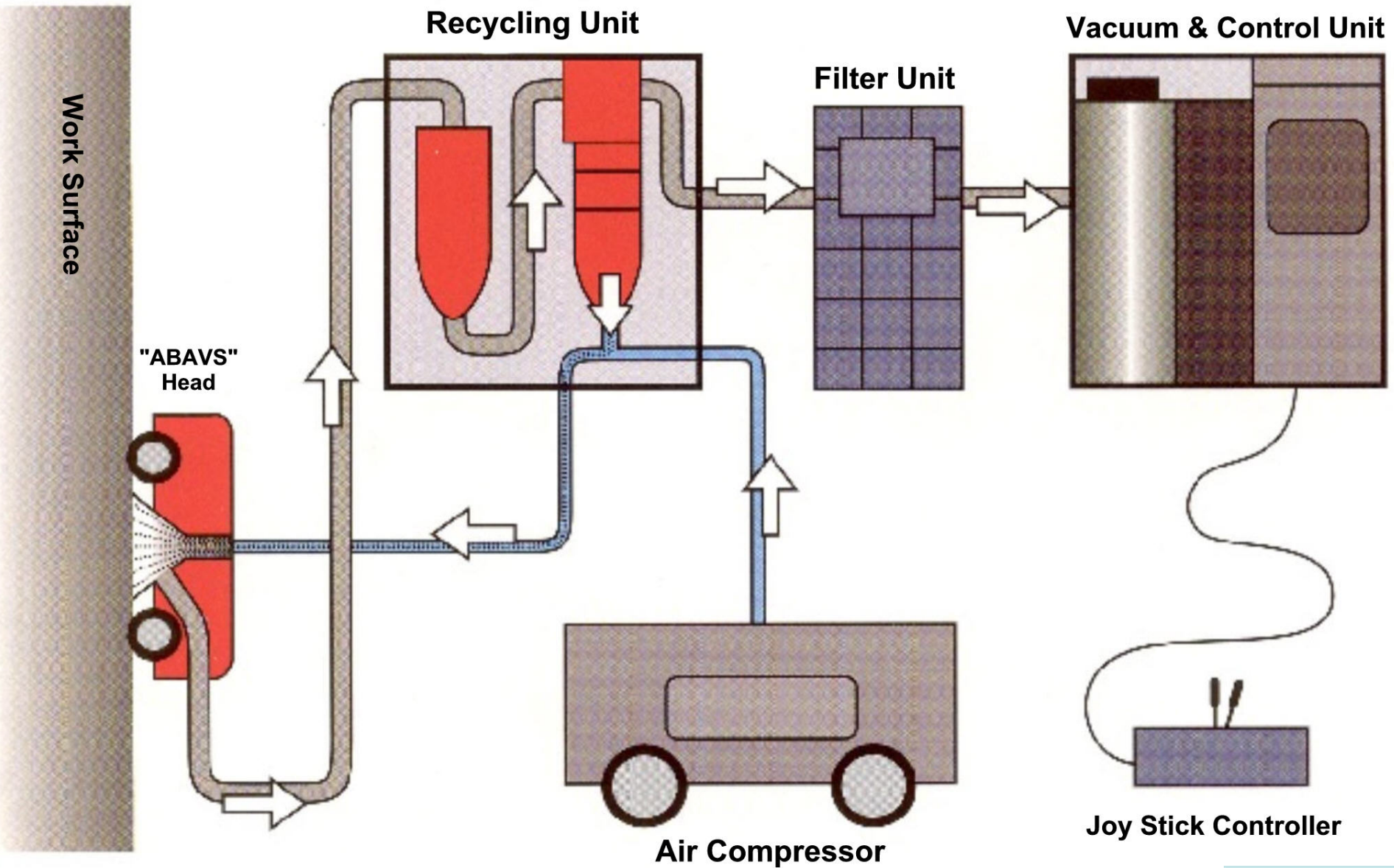
NEXT

# Abrasive blasting hasn't been exciting... until now!

It was tough, dirty, and dangerous.

It demanded a lot of support work that added nothing to your project.

Robo Blast USA is changing that with quick, safe, and efficient abrasive blasting technology.



# All In One Portable Package

- All units are custom designed to fit your needs.
- We work with you to build the most efficient system.
- Pick the components you need and leave out the ones you don't.
- If you have special needs let us know, if we don't already have an answer we will work with you to find one.
- The possibilities are endless

# Quick Set-up

- The "ABAVS" robot head and support units move to work quickly and easily on standard highway equipment.
- The entire "ABAVS" working unit is assembled in a matter of minutes.
- The robot head fits through tank manholes.
- The head works up to 300 feet vertically and 600 feet horizontally from support.
- Because of The "ABAVS" superior reach, fewer equipment moves are needed to keep work going.

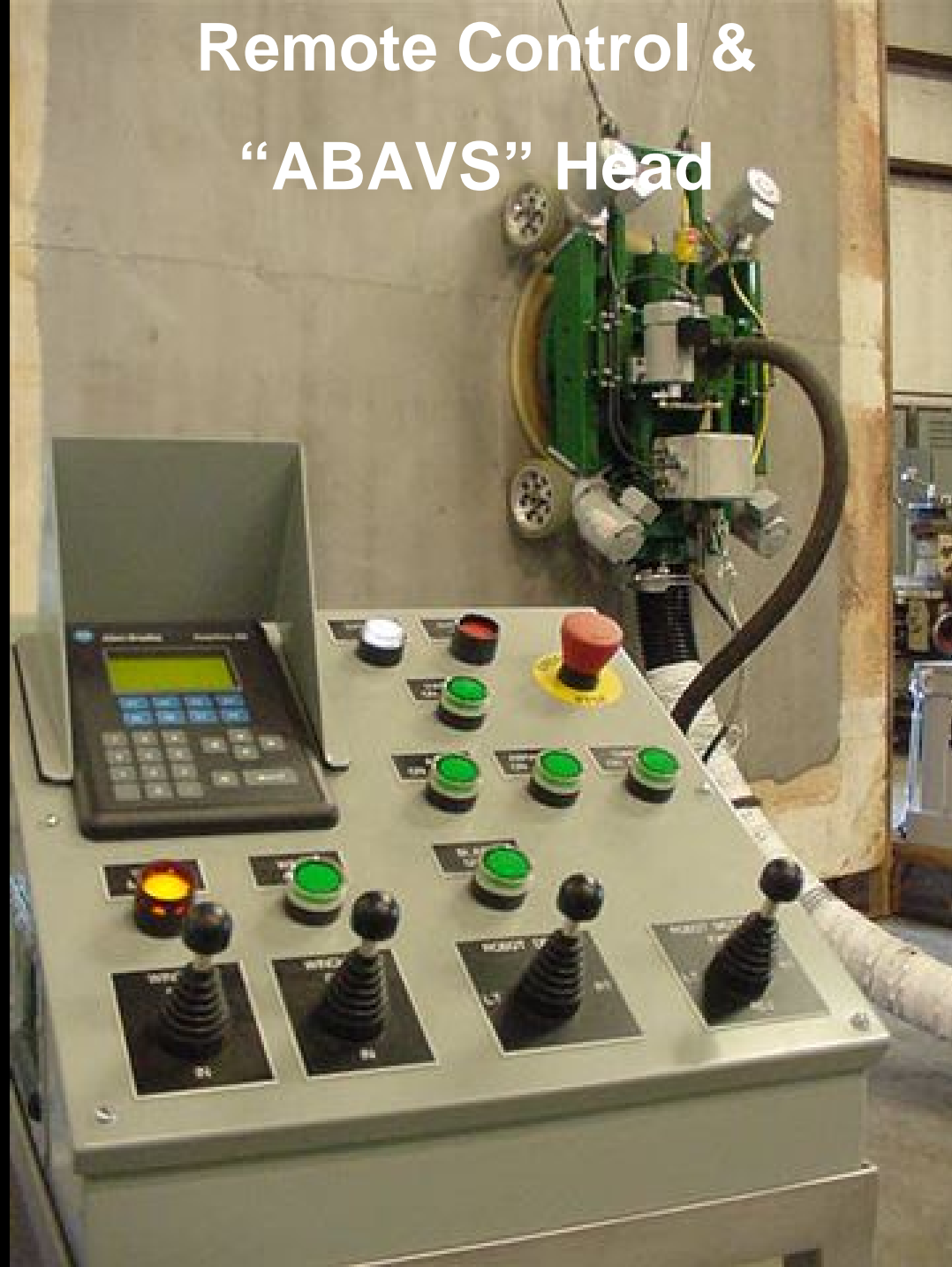
# Quick Savings

- The "ABAVS" eliminates the need for expensive and time consuming 'tenting' of the work areas.
- It virtually eliminates worker exposure to hazardous material.
- All blasting is contained in a vacuum for total quality control of the work.
- The "ABAVS" moves to the work with no need to erect or remove staging or man-lifts.
- All abrasive and residues are collected, separated and grit is recycled to minimize costly disposal.

# Quick Results

- The "ABAVS" needs only a few minutes of downtime each shift for easy, predictable maintenance.
- The "ABAVS" requires 5 minutes each shift to replace two simple bolted rubber blast shields.
- The blast nozzles are replaced at about the same rate as regular abrasive blast nozzles.

# Remote Control & “ABAVS” Head



# Schmidt Two Chamber

## Blast Pot



# Allen-Bradley Electronics





Roots Blower

Safe Systems Double Dump

Elevator Cross Screw Auger Separator

Air Wash

# Thern Auto Tension Winch



NEXT

# “ABAVS” Versatile Applications

## Marine

The “ABAVS” can provide excellent service to the marine and offshore industries:

- Large shipyards
- Small shipyards
- Hull exteriors
- Turn of the bilge & inverted
- Flight and hanger decks
- Helo decks
- Superstructures
- Block assembly joints
- Asbestos contamination removal

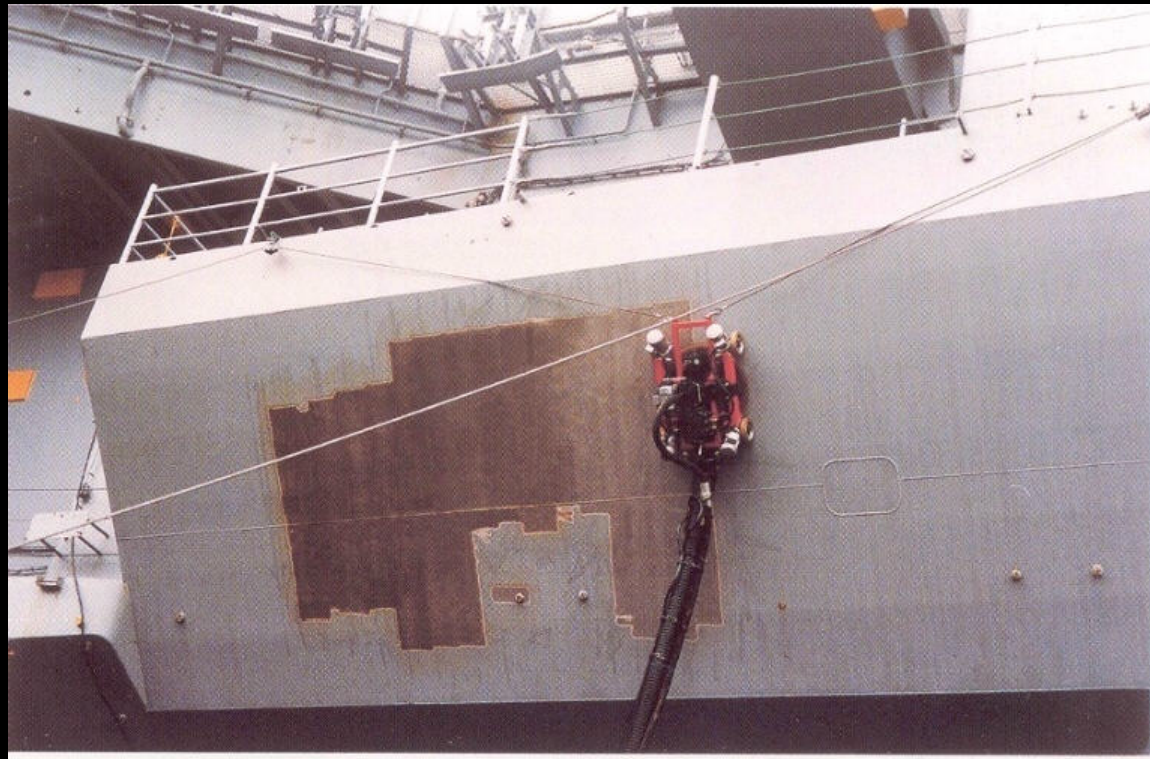


# “ABAVS” Versatile Applications

## Marine

The “ABAVS” can provide excellent service to the marine and offshore industries:

- Large shipyards
- Small shipyards
- Hull exteriors
- Turn of the bilge & inverted
- Flight and hanger decks
- Helo decks
- Superstructures
- Block assembly joints
- Asbestos contamination removal



# “ABAVS” Versatile Applications

## Marine

The “ABAVS” can provide excellent service to the marine and offshore industries:

- Large shipyards
- Small shipyards
- Hull exteriors
- Turn of the bilge & inverted
- Flight and hanger decks
- Helo decks
- Superstructures
- Block assembly joints
- Asbestos contamination removal

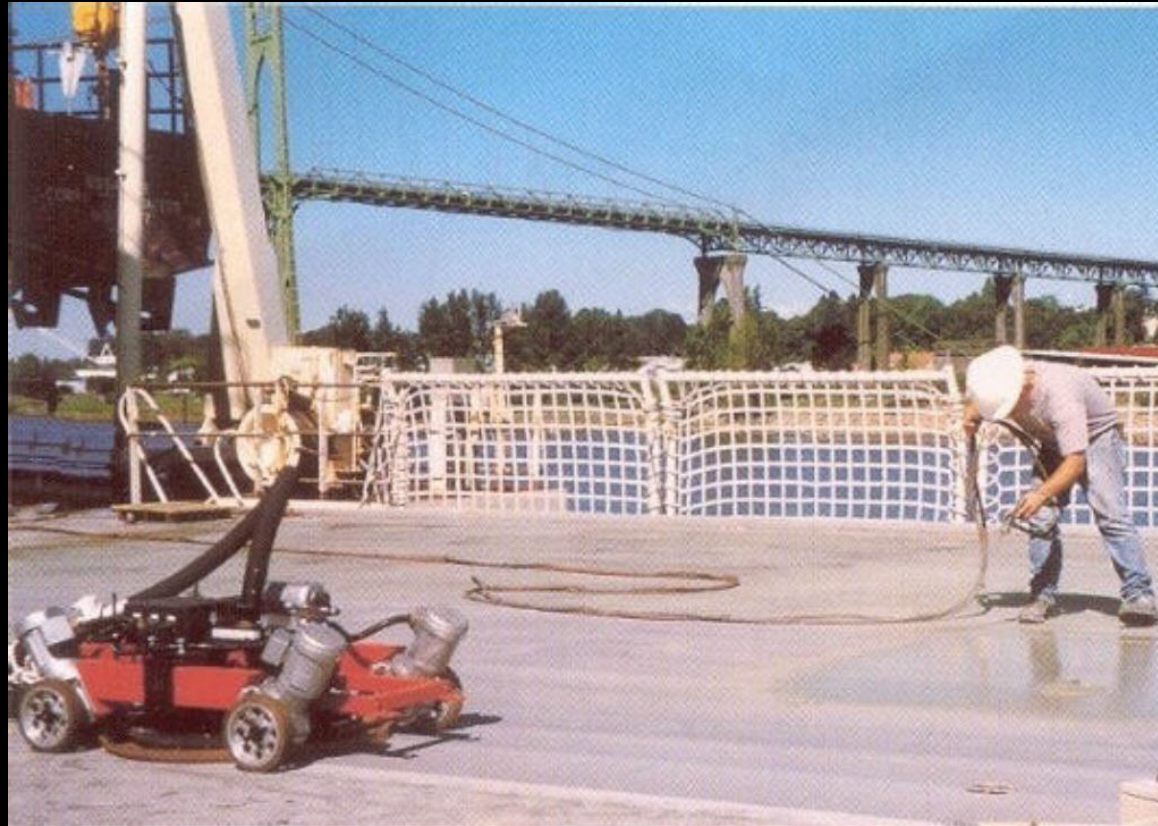


# “ABAVS” Versatile Applications

## Marine

The “ABAVS” can provide excellent service to the marine and offshore industries:

- Large shipyards
- Small shipyards
- Hull exteriors
- Turn of the bilge & inverted
- Flight and hanger decks
- Helo decks
- Superstructures
- Block assembly joints
- Asbestos contamination removal



# “ABAVS” Versatile Applications

## Marine

The “ABAVS” can provide excellent service to the marine and offshore industries:

- Large shipyards
- Small shipyards
- Hull exteriors
- Turn of the bilge & inverted
- Flight and hanger decks
- Helo decks
- Superstructures
- Block assembly joints
- Asbestos contamination removal



# “ABAVS” Versatile Applications

## Marine

The “ABAVS” can provide excellent service to the marine and offshore industries:

- Large shipyards
- Small shipyards
- Hull exteriors
- Turn of the bilge & inverted
- Flight and hanger decks
- Helo decks
- Superstructures
- Block assembly joints
- Asbestos contamination removal



# “ABAVS” Versatile Applications

## Marine

The “ABAVS” can provide excellent service to the marine and offshore industries:

- Large shipyards
- Small shipyards
- Hull exteriors
- Turn of the bilge & inverted
- Flight and hanger decks
- Helo decks
- Superstructures
- Block assembly joints
- Asbestos contamination removal



NEXT

# “ABAVS” Versatile Applications

## Tanks and Processes

The “ABAVS” can perform abrasive blasting surface preparation on a variety of tank and process equipment including:

- Aboveground storage tanks
- Chemical storage spheres
- Pulp and paper process equipment
- Water storage tanks
- Sewage treatment facilities
- Refining process equipment
- Cooling water inlet structures
- Structural restorations
- Low level radiation removal



# “ABAVS” Versatile Applications

## Highways and Bridges

The “ABAVS” can serve a wide array of applications to prepare and rehabilitate:

- Concrete structures
- Concrete reinforcement
- Masonry restoration
- Highway support structure
- Dam structures and gates
- Turbine penstocks
- Steel bridges and structures
- Lead paint removal



# Robo Blast USA

## Efficient Solutions

### Efficient Operation

- The blast head is joy-stick controlled to do a high quality job around the clock.
- Because the blast nozzle is at a constant distance from the surface the "ABAVS" produces a constant and even profile.
- Blasting abrasives are captured and recycled 10 times or more.
- The "ABAVS" has no impact on near by work and property and keeps your project moving.
- The "ABAVS" can use a wide range of grit, preferring SAE steel grit for the most efficient results.
- Only one robot operator and a part time assistant are needed to keep going all day.

# Robo Blast USA

## Efficient Solutions

### Efficient Production

- The "ABAVS" delivers 200 to 900 square feet per hour every hour, and reduces the need for additional personnel such as pot tenders.
- The "ABAVS" can be set to blast a constant profile from 1 to 10 mills.
- The "ABAVS" is free from worker fatigue and performs the same work all day and every day.
- The "ABAVS" requires no strenuous effort. It dramatically increases worker performance.
- The unit's freedom from fugitive emissions creates a smooth flow of project productivity.
- The unit's versatile accessories are available to solve any unusual surface preparation need.

# Robo Blast USA

## Efficient Solutions

### Efficient Support

- These robots are the result of over fifteen years of development and testing in rigorous applications.
- The “ABAVS” is made in the USA with US parts.
- Because the system uses standard blasting components your men will already understand and be able to maintain the “ABAVS”
- Most parts are available from vendors that you already work with.
- Robo Blast USA has tec support available 24/7 365 days a year.
- Robo Blast USA is today’s and tomorrow’s powerful abrasive blasting innovation.

# Robo Blast USA

## Safe Solutions

### Safe Environment

- The "ABAVS" has no fugitive emissions, unlike open nozzle blast operations.
- The "ABAVS" has no contaminated water emissions, unlike high pressure water cleaning.
- The "ABAVS" operates free of noise and dust interference of nearby work.
- The work site is kept clean to reduce chances of environmental stoppages or penalties.
- The "ABAVS" overall superior environmental performance will reduce your costs for environmental precautions and penalties.

# Robo Blast USA

## Safe Solutions

### Safe Projects

- The "ABAVS" operation is easy
- The "ABAVS" improves safety because workers don't become overly tired.
- The "ABAVS" blast residues are confined in barrels for easy safer disposal.
- The "ABAVS" head holds itself safely to the surface, including undersides and horizontals, with vacuum.
- The "ABAVS" production rates are consistent and far more predictable than conventional blast methods.

# Robo Blast USA

## Safe Solutions

### Safe Workers

- Concrete, steel or non-ferrous surfaces are prepared with no hazardous staging.
- The head travels to the work as the operator directs by 'joy stick'. No one has to work aloft.
- Workers are exposed to fewer injuries and less hazardous material than conventional operations.
- Fewer lost time injuries mean higher productivity and lower worker compensation costs.
- When working on hazardous materials such as lead, conventional precautions are not needed due to lack of worker exposure.

# Robo Blast USA

## “ABAVS”

Abrasive Blast And Vacuum System

Blasting Hulls for  
Northrop Grumman  
&  
General Dynamics

# Robo Blast USA

“ABAVS”

Abrasive Blast And Vacuum System

[roboblastusa@verizon.net](mailto:roboblastusa@verizon.net)

503-313-0200