

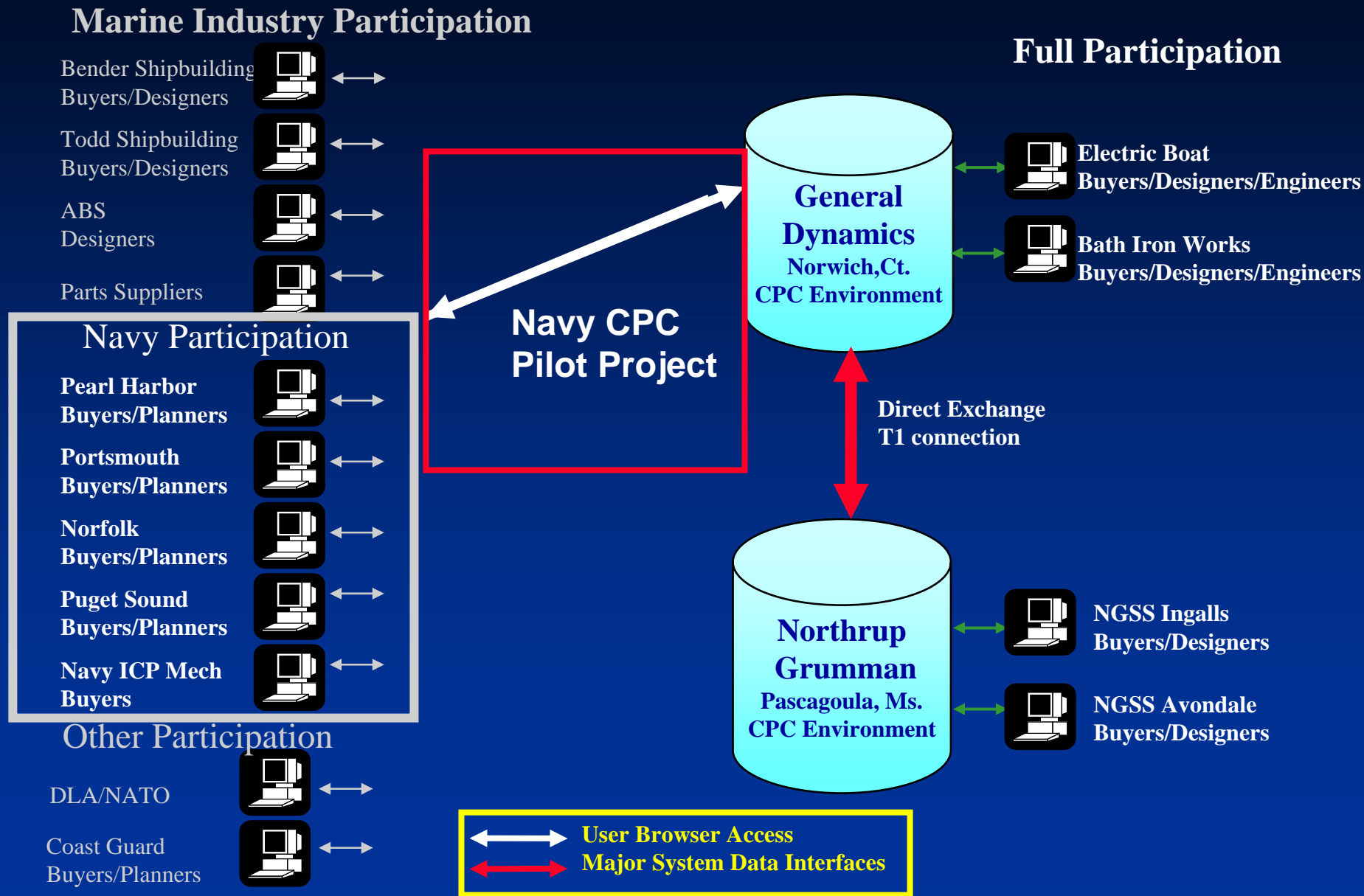


Navy Common Parts Catalog Pilot Project

Barry Espeseth,
PDMT Major Initiative Team Lead
Electric Boat
June 5, 2007



CPC is used by the Shipbuilding Enterprise at different levels of participation



The Navy and the CPC Participating Shipyards' are progressing towards providing CPC access to Navy Shipyards and NAVICP

Project Statement of Work includes:

- **Provide 7 Navy sites access to CPC thru the web interface**
- **Navy security certification (DITSCAP) of CPC**
- **Develop CPC Navy training curriculum**
- **Train 16 Navy personnel at 3 sites**
 - **Portsmouth Naval Shipyard, Kittery, Me.**
 - **Puget Naval Shipyard, Bremerton, Wa.**
 - **NAVICP, Mechanicsburg, Pa.**
- **Support pilot with a EB “help desk” for training related questions**
- **Assist the Navy in their final assessment activities after the pilot**
- **Project time period: 1/06 – 12/07**

CPC Navy Pilot Project Status

- **Deliverables 1 and 2 (Training Curriculum) are issued**
- **Additional Project Funding for the new Navy Security Requirements was awarded to the CPC Participating Shipyards (12/1)**
- **Navy Security Status:**
 - **On 5/30 PEO SUBS Director, R. Mcnamara, approved the “Authority to Test” which provided needed security permission to proceed with the Pilot.**
 - **This security requirement has held up the Pilot for 16 months and the Project can now proceed.**
- **Next Steps:**
 - **CPC Access production turnover: 6/17**
 - **Training site testing: 6/18-23**
 - **Portsmouth Training: 6/27**
 - **Puget Training: 7/11**
 - **Mechnicsburg Training: TBD**
 - **CPC Pilot Assessment: 7/1-12/23**
- **Post Project Work**
 - **Navy to analyze business case with CPC Participating Shipyards for permanent access.**
 - **If affirmative, develop new project plan for Navy permanent access to CPC.**

Training Locations/Organizations/Users

Portsmouth, NH Training Class Room POC Kim Bedard - 207 438-3310

Date: 2007-06-27

- **Portsmouth Naval Shipyard Code 200**
 - Kim Bedard
 - James (Jim) Phinney
 - Kathryn (Kathy) Paradis
- **Norfolk Naval Shipyard Code 200**
 - Gerald Zaner
 - Bryan Silverthorne

Puget Sound, WA Training Class Room POC Robert T. Pedroza - 360 476-6441

Date: 2007-07-11

- **Puget Sound Naval Shipyard Code 200**
 - Barb Royce
 - Kyle Evers
 - Mark Schooler
 - Ross Colson
- **Intermediate Maintenance Facility**
 - Bruce Robison
- **Pearl Harbor Naval Shipyard Code 200**
 - Sandra Tichy
 - Harris Shiroma

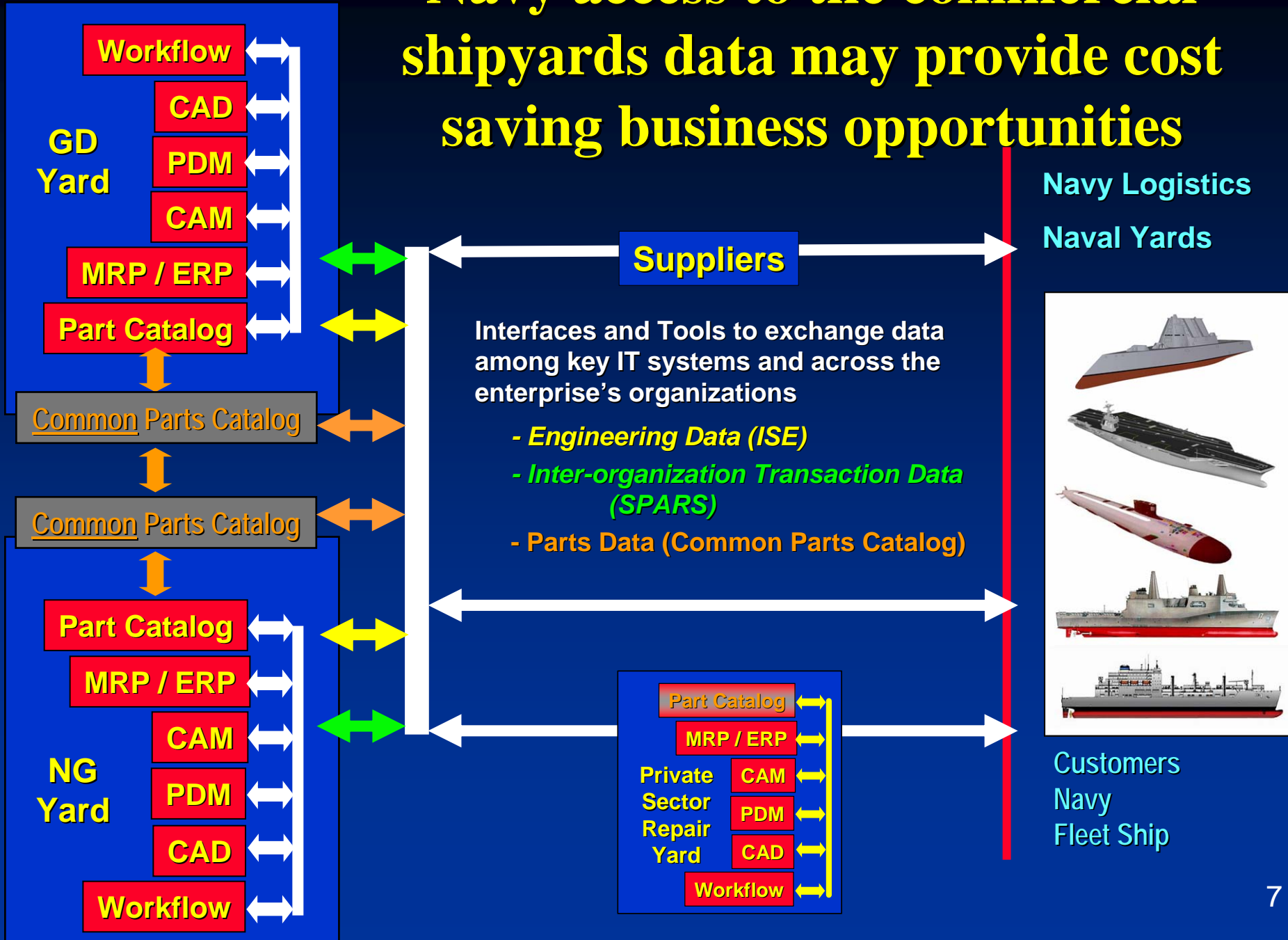
Mechanicsburg, PA Training Class Room POC LCDR Seth Manti - 717 605-1970

Date TBD

- **NAVICP Code 056 Casualty Repair**
 - Pat Schwarz
 - Brad Shotzberger
- **NAVSEA Logistics Center**
 - Keith Doyne
- **NSWC SSES Philadelphia Code 9450**
 - Edward J. Socha

**Why is the Navy interested in access
to the shipyard's CPC?**

Navy access to the commercial shipyards data may provide cost saving business opportunities



Types of Cost Savings and Business Opportunities the Navy expects

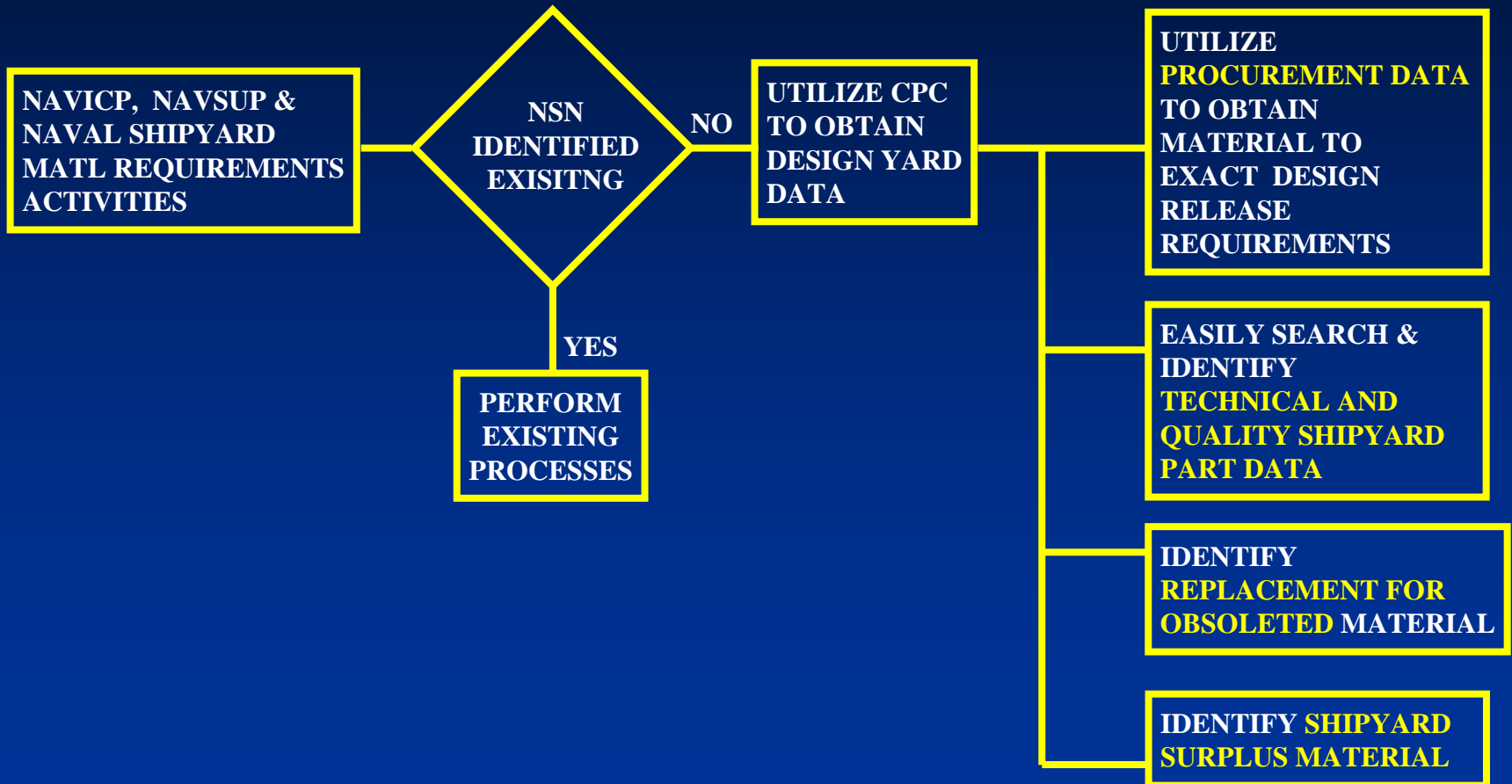
- **Out of the box:**

- Re-use of design applicable standard part data at public shipyards
- Utilizes shipyard IPDE capabilities/investment
- Standardized descriptive and document data for Navy Part Standardization Program
- Design disclosure of critical attributes (e.g., SUBSAFE, Level 1 & DSS-SOC)
- Shipyard part number cross reference to NSN's
- Access and utilization of commercial shipyards surplus material

- **Future possibilities:**

- Electronic exchange of digital component development data
- Ability to increase material availability and reduced cost with joint procurements utilizing intra- and inter-shipyard part equivalency
- Increase quantity procurements

The Pilot Project is designed to assess if real-time CPC access provides cost effective business opportunities to the Navy



Long Range Issues

During pilot phase (7/1 – 12/23)

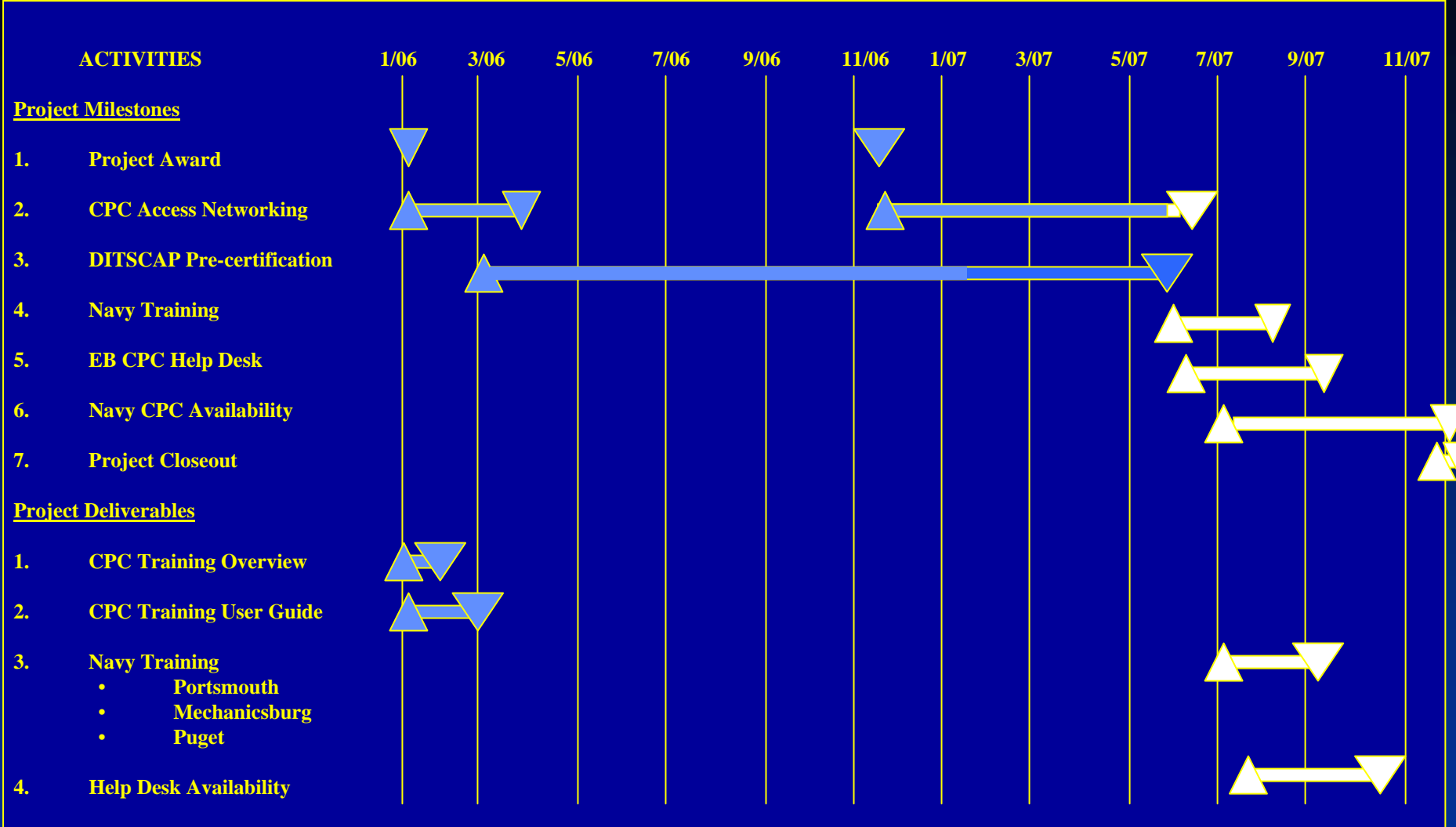
- **Metrics for assessing the utility to the Navy need to be determined and collected**
- **Data needs to be analyzed and a business case developed**
- **Go/no-go decision must be made to proceed**

After pilot phase (if continued access is recommended)

- **Approach for providing Navy access to the data needs to be developed with industry**
- **System requirements for Navy access need to be determined**
- **Funding of Navy use of the CPC data and software needs to be provided**

Navy CPC Pilot Project Schedule II

12/12/05

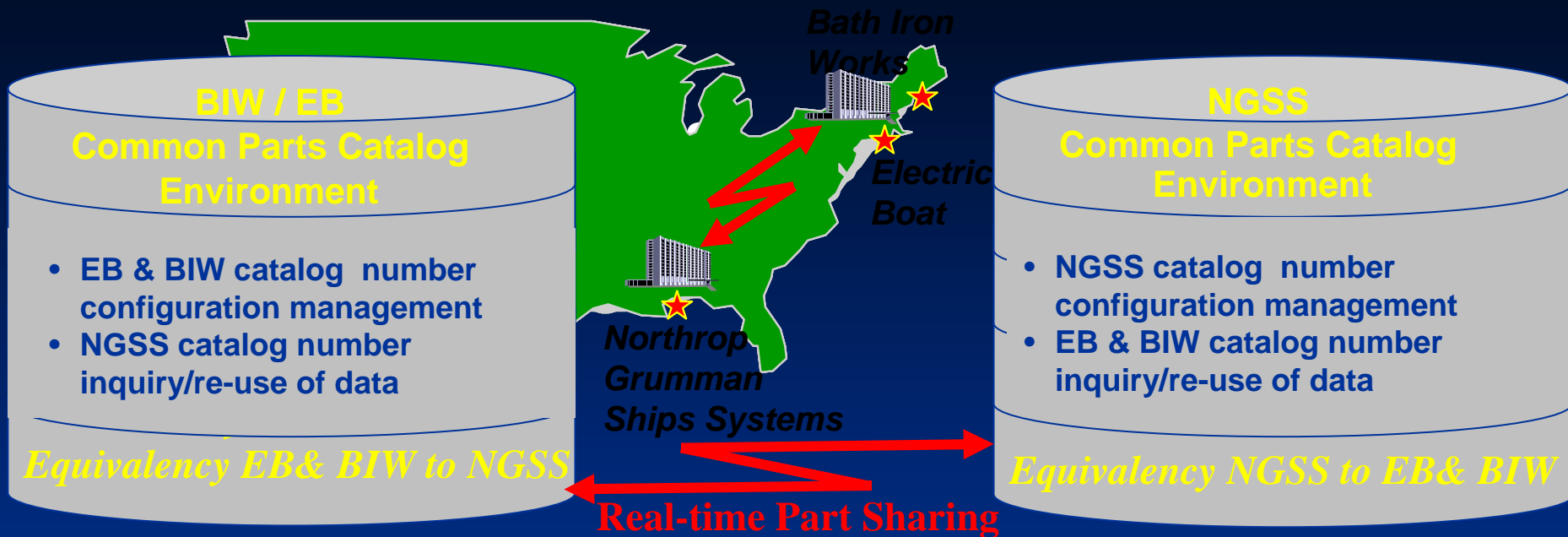


▲ SCHEDULE START ▼ SCHEDULE COMPLETE ASSIGNEE: B. Espeseth SUPPORT: _____
▲ STARTED ACTUAL ▼ ACTUAL COMPLETE APPROVAL: _____
█ % COMPLETE

Questions?

BACKUP

EB, BIW and NGSS have implemented a Common Parts Catalog



- 2M+ Catalog Numbers assigned to standardized classification schema
- 7.2M configuration managed Document ID's linked to these catalog numbers
- 300K Inner-shipyard Part Equivalency Links
- 10K Inter-shipyard Part Equivalency Links
- 90K Inter-shipyard Shared Procured Catalog Numbers
- 100's of daily shared part transactions between shipyards
- Monthly audits identify a 99.9 accuracy rate against defined inter-shipyard stds



Class: CPC PROCURED PARTS

Property	<input type="checkbox"/> Item 1
Bottom Class ID -> Class Label	VALVE, BALL-NON METRIC
Catalog Number	* 10-21-0100K
Noun Name	* VALVE
Type	3-WAY BYPASS
Modifier	SCH-80
Material	* STEEL
Document ID -> Part Document ID	* 1385965_K_K_ASSY-34
Document Sort Order	1
Applicability -> Applicability	* NSSN
Standardization Code	K

LAMP Document ID to CPC Part

Form DEFAULT Local

Catalog Number -> Catalog Number	Document ID -> Part Document ID	Catalog Num
211022060	MIL-F-16377/53_-A_M16377/53-100.2	96169
211022060	MIL-F-16377_G_G1_TY-II,CL-1,SYM-100.2	96169
211022060	SC-12-4_2_2	96169
211022060	SC-76-150_1_1	96169
211022060	SC-SD1040_5_5	96169
211022060	SC-10-87V_4_4	96169
211022060	SC-60-29_16_16	96169
211022060	SC-76-87_2_2	96169

User Friendly Search

Common Parts Catalog is:

Document to Part X-Ref



Inter-shipyard Part Equivalency

- shipyard parts catalog
- part search and retrieve repository
- shipyard, supply chain, Navy collaborator
- future business facilitator

Shipyard Part to NSN X-Ref

Power Search

Browser View Power Search View Results View

Equivalence

Items 1 to 2 of 2

	Master Cat... *	Equivalent Cata...	Equivalent Catalo
	55019011		
70876	55019011	96169	24-51-0089
70876	55019011	34293	9535-DA0-648795

NSN to CPC Part

Items 1 to 2 of 2

Cat... *	Catalog Number... *	NSN -> NSN National Stock Number *
		*00-725-4465
70876	14336052	4730-00-725-4465
34293	4730-DA0-139132	4730-00-725-4465

The CPC Participating Shipyards have a history of collaboration across our shipyards

1999: Part Data Standards Development

- **Data Element Dictionary**
 - 256 attributes defined
- **Classification Schema**
 - 2200 categories over 8 levels
- **EVV Establishment**
 - Over 14K attribute names

2000: Standard Processes Development

- **Add, Change, Part and Document Procedures**
- **Document Configuration Management Procedures**
- **Part Equivalency Procedures**
- **Part Sharing Procedures**
- **Inter-shipyard Procedures**

2001-2003: Data cleansing to Standard Reqts

- **2M Catalog Numbers assigned to schema**
- **7.2M Document ID's linked to parts**
- **300K Inner-shipyard Equivalency Links**
- **10K Inter-shipyard Equivalency Links**
- **90K Shared Procured Catalog Numbers**

2004: System implementation

- **Coordinated shipyard schedules**
- **1200 Joint Test Scenarios**
- **“Real Time” System Integration**

2005: Central Configuration Control Group Inner and Inter-Shipyard Configuration Management Operations

- **200 CCCG Change Requests to:**
 - maintain CPC synergy
 - modify system links to assure part sharing and equivalency integrity
- **Audit Program**
 - assuring quality assurance to established standards and procedures
 - audits schedule issued with shipyard rotation for performing audits
 - 9 monthly audits with a 99.7 accuracy rate

65% of the Navy's Surface Combatant, Submarine, and Amphibious Procured Material Is Now Standardized and Configuration Managed in CPC



CPC contains 300K+ procured catalog numbers available to our shipyards and our Navy customer