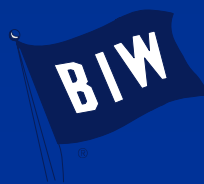




## Common Parts Catalog NSRP Projects:

- CPC Navy Pilot
- CPC Surplus Identification

Barry Espeseth,  
PDMT Major Initiative Team Lead  
Electric Boat  
January 31, 2007



# **Navy Common Parts Catalog Pilot Project**

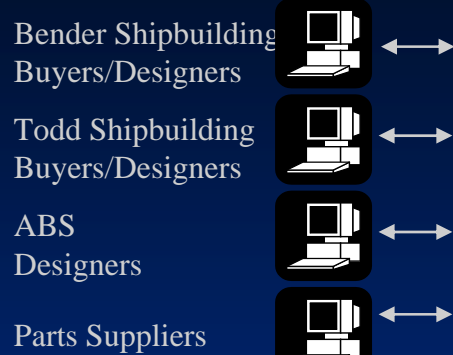
# **The Navy has awarded a project to EB to pilot Navy Shipyards and NAVICP access to CPC**

## **Project Statement of Work includes:**

- **Provide 7 Navy sites access to CPC thru the web interface**
- **Navy security certification (DITSCAP) of CPC**
- **Develop CPC Navy training curriculum**
- **Train 16 Navy personnel at 3 sites**
  - **Portsmouth Naval Shipyard, Kittery, Me.**
  - **Puget Naval Shipyard, Bremerton, Wa.**
  - **NAVICP, Mechanicsburg, Pa.**
- **Support pilot with a EB “help desk” for training related questions**
- **Assist the Navy in their final assessment activities after the pilot**
- **Project time period: 1/06 – 12/07**

# CPC is used by the Shipbuilding Enterprise at different levels of participation

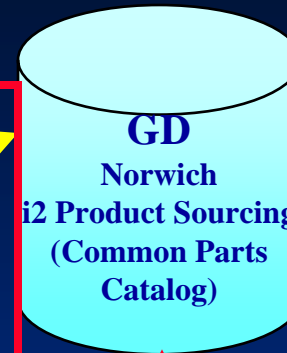
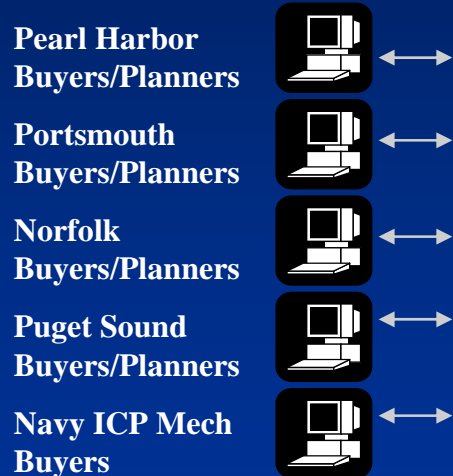
## Marine Industry Participation



## Full Participation



## Navy Participation

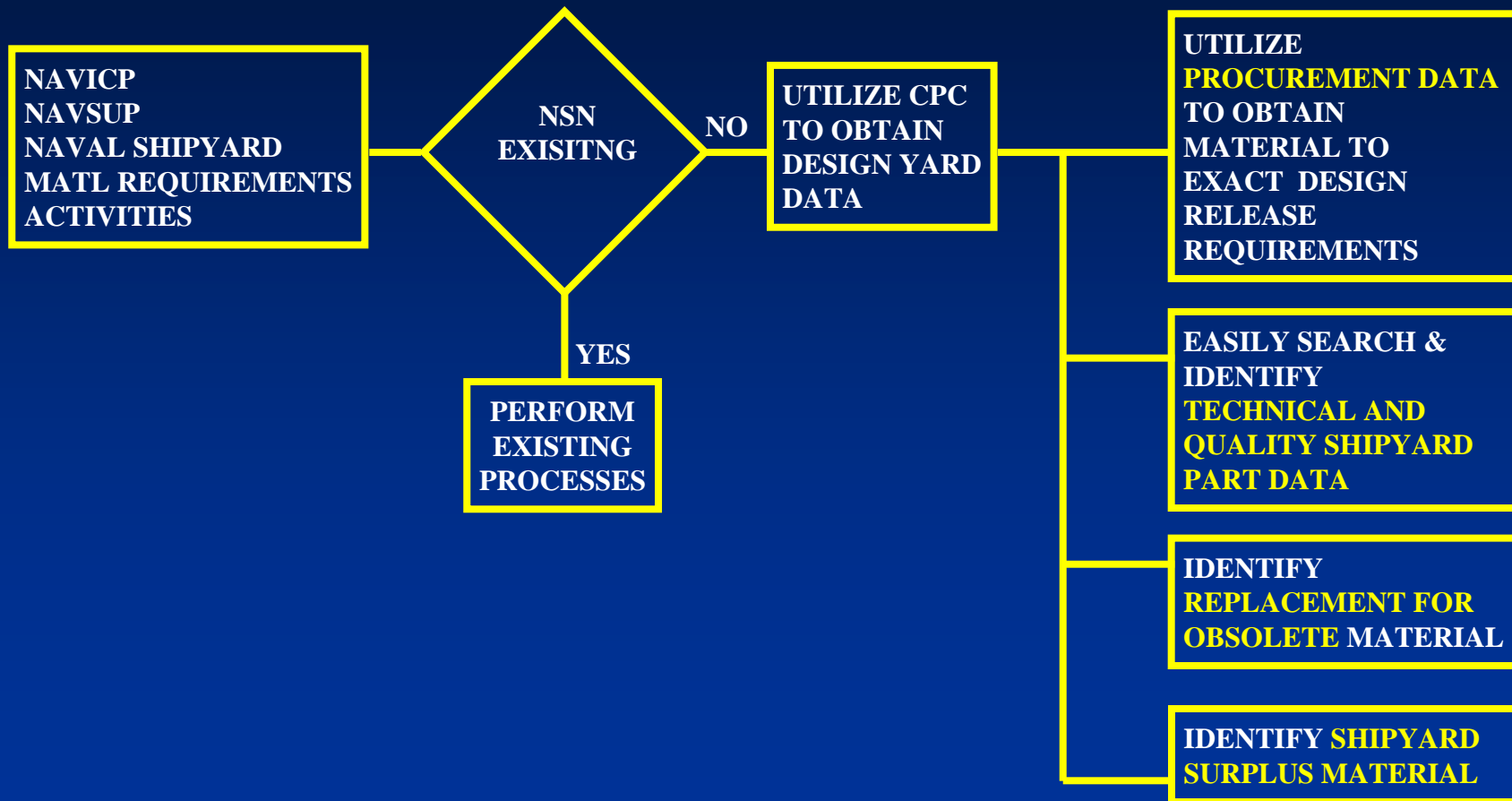


Direct Exchange  
T1 connection

## Other Participation



# CPC Pilot will determine if real-time access provides needed business opportunities

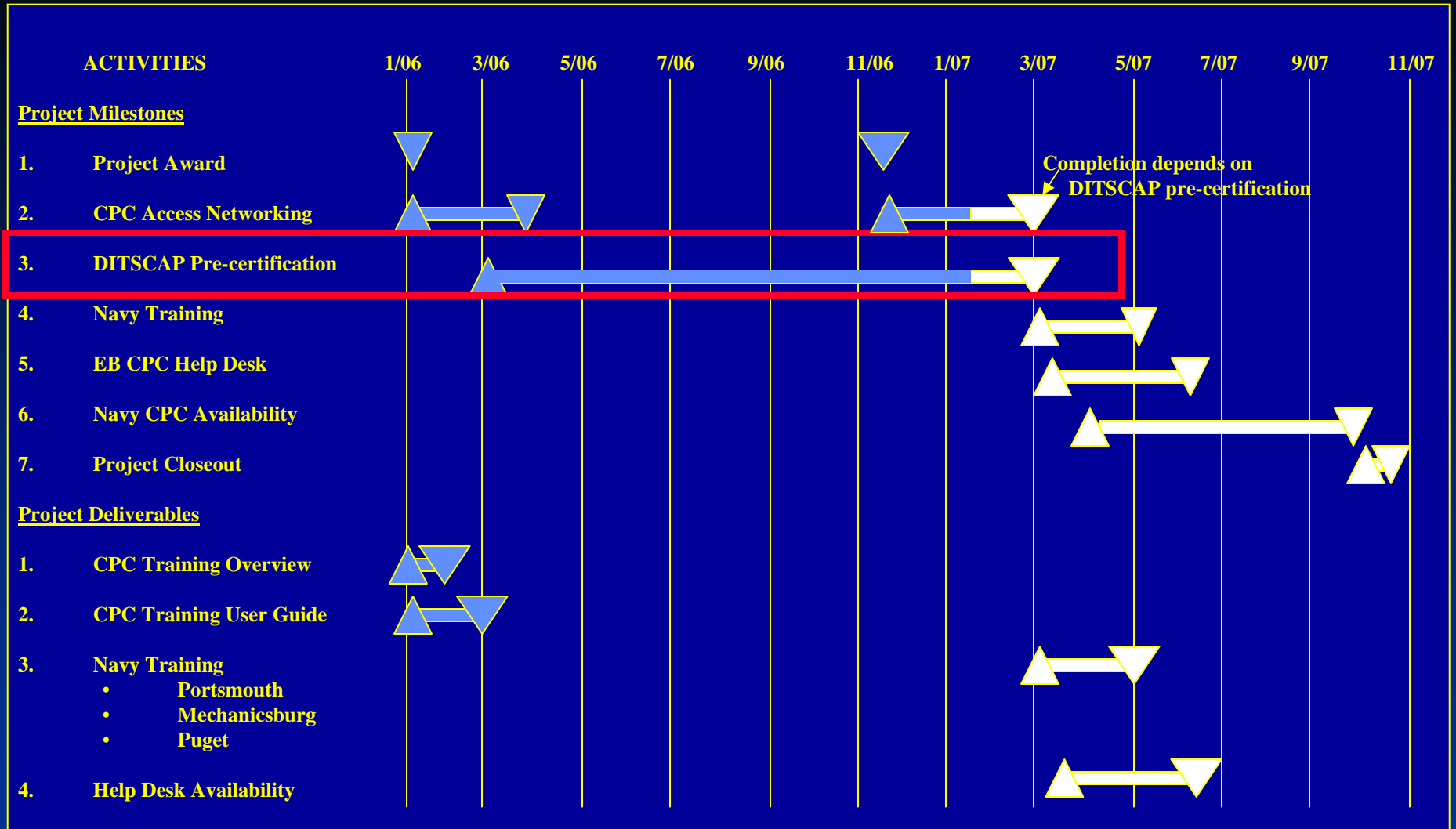


# CPC Pilot Project Status

- **Deliverables 1 and 2 (Training Curriculum) are issued**
- **Additional Project Funding for the new Navy Security Requirements was awarded to the CPC Participating Shipyards (12/1)**
- **Navy Security Status:**
  - **Navy Security Process is on schedule. The System Security Authorization Agreement (SSAA) has been developed and approved by NAVSEA and the CPC Participating Shipyards.**
  - **The SSAA is now in the security approval circuit**
- **Next Steps:**
  - **Obtain Navy Security approval (2/15) This effort is now 2 weeks late and is the determining factor in supporting the Pilot Project Schedule.**
  - **Open CPC to selected Navy Pilot Sites (3/1)**
  - **Commence CPC Training at Portsmouth, Mechanicsburg, and Puget (3/15 – 5/1)**
  - **Navy to perform CPC Pilot (5/1 – 11/1)**
- **Post Project Work**
  - **Navy to analyze business case with CPC Participating Shipyards for permanent access.**
  - **If affirmative, develop new project for Navy permanent access to CPC.**

# Navy CPC Pilot Project Schedule II

12/12/05



▲ SCHEDULE START

▼ SCHEDULE COMPLETE

ASSIGNEE: B. Espeseth

SUPPORT: \_\_\_\_\_

▲ STARTED ACTUAL

▼ ACTUAL COMPLETE

APPROVAL: \_\_\_\_\_

█ % COMPLETE

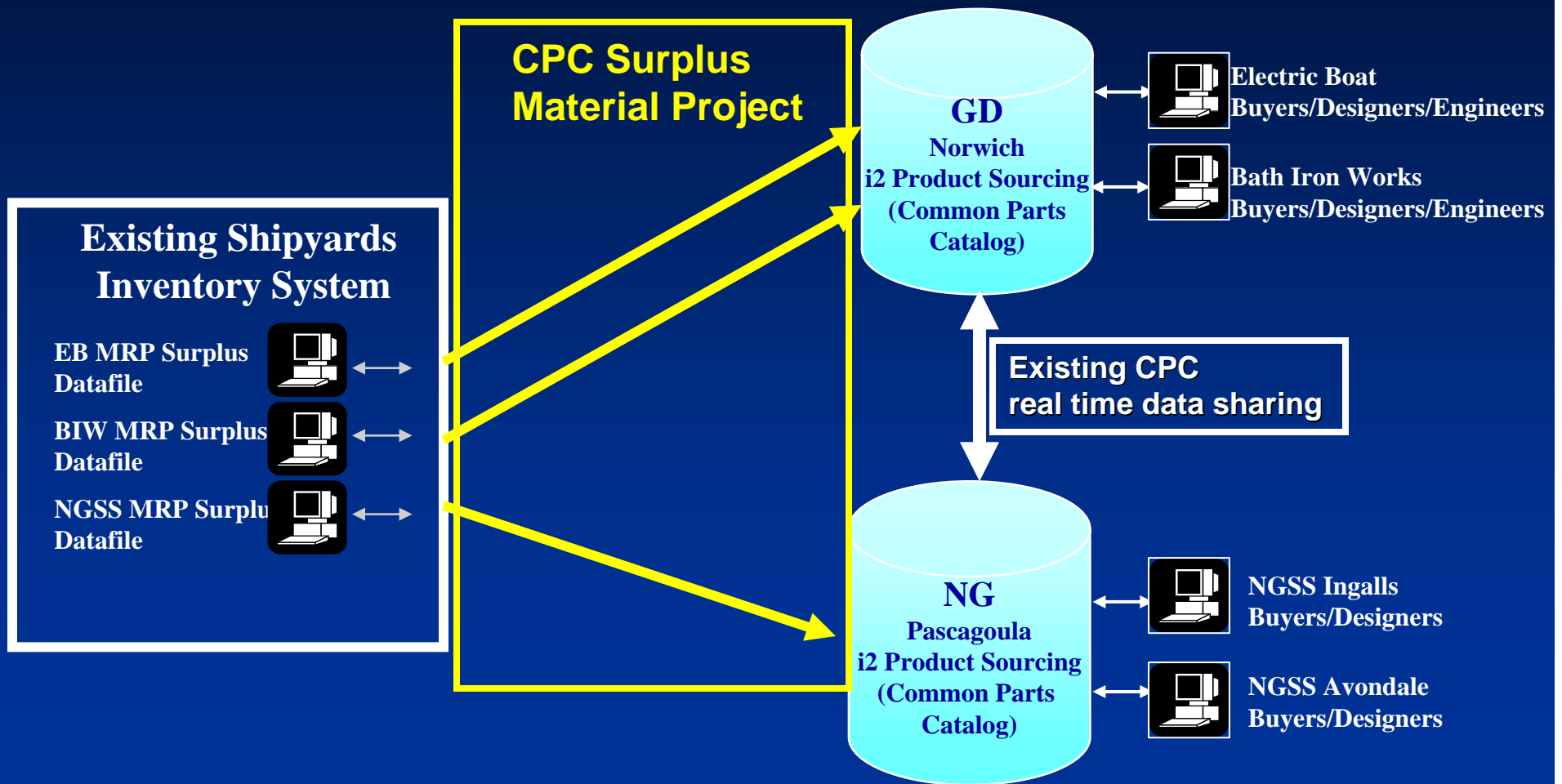
# Common Parts Catalog Surplus Material Project

# **This project is complete and has developed a continual process to identify shipyard surplus material availability to the CPC Participating Shipyards**

## **Project Statement of Work and Accomplishments included:**

- **Development of a system specifications to capture surplus material identification at each CPC Participating Shipyard (EB, BIW and NGSS) and electronically load to CPC on a regular schedule.**
- **Development of code, test scenarios and production turnover of surplus material feed to CPC**
- **Development, collaboration and issue CPC Central Configuration Control Group (CCCG) procedure CCCG-6 to document process to procure surplus material from the applicable shipyard.**

# CPC now identifies each CPC Participating Shipyard's surplus material that is available for sale



# CPC now identifies surplus material availability for over 17K shipyard part numbers

- VLT/Surplus Identifier attribute will provide surplus material quantity when applicable. In this case there is 389 inches of surplus barstock.
- If attribute is “blank”, no surplus material available for that shipyard catalog number.

Explore Administration Desktop - [SRMDB via ebes2.ess.gdeb.com]

File Edit Validate List Edit Options

Solutions

- Connection
- Admin Desktop

Applications

- Power Search
- Dashboard/Shortcuts ...
- User Admin
- Permissions Admin
- Forms Editor
- Data Modeler
- OLAP Administration

Power Search

Browser View Power Search View Results View Edit View

BAR, ROUND-NON METRIC

Form: DETAIL

Unit of Measure Issue *	IN
Unit of Measure Buy *	
Make/Buy Code *	B
Source Code *	A
Shared Part Override	
MIC Level *	Q
Sole Source *	E
Standard Inspection Code	7012
Production Material *	Y
ILS Status	
COTS	
Part Tolerance	
VLT/Surplus Identifier	0389
Part Description	NOT ROLLED, QUENCHED AND TEMPERED 12 TO 20 FOOT LENGTHS
Hazardous Material *	
Company CAGE Code →	[Class: CAGE Code]
CAGE Code ↔	96169
Replaced by Catalog Number →	[Class: Common Parts Catalog CPC]
Part Ownership CAGE Code ↔	
Catalog Number ↔	

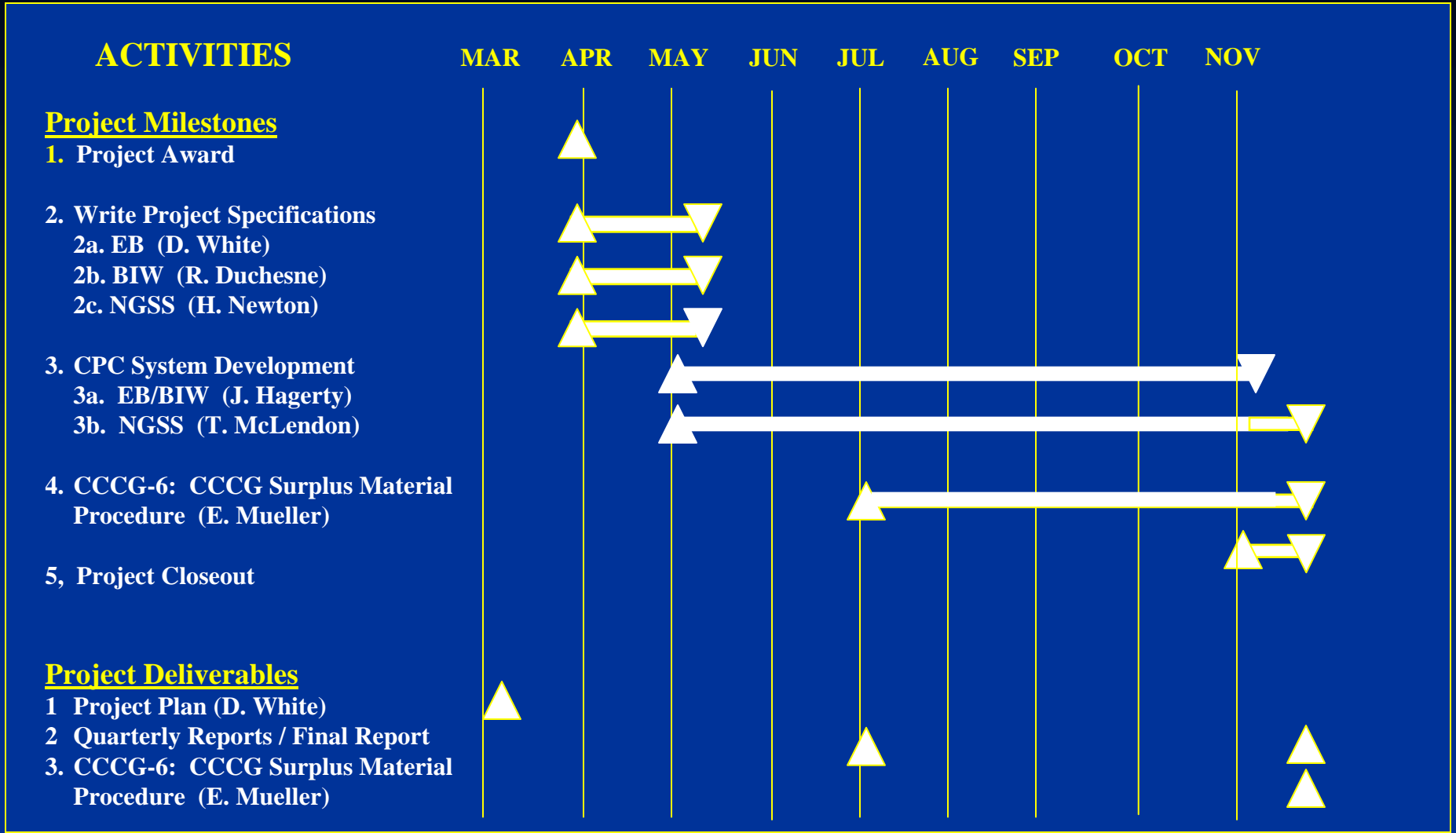
Attach Create Apply Delete Close

Start > Friday S... D:\Docum... Procedure... Surplus Ma... Explore A... 2:23 PM

# CPC Pilot Project Final Status

- **The project is complete. This will be the last update to the Panel.**
- **All project deliverables were accomplished within budget and on schedule.**
- **Electric Boat has monthly downloads of surplus material identification to CPC from our MRPII System. Presently there are 3519 surplus material part numbers in CPC.**
- **BIW identifies their surplus material on a periodic basis and downloads that information to CPC. BIW presently has 1410 surplus material catalog numbers in CPC.**
- **NGSS has scheduled periodic downloads of surplus material identification to CPC from their MRPII System. NGSS presently has 12,485 Part numbers in CPC.**
- **CPC Central Configuration Control Group (CCCG) Procedure CCCG-6 entitled, “CPC Surplus Material Indicator” has been issued and is providing the CPC Participating Shipyards with a process and POC’s to procure surplus material.**
- **All actions taken for this project ensured that future business opportunities with organizations such as the Navy or other shipyards could be supported with minimal update to our CCCG procedures.**

# CPC Surplus Material Project Schedule



▲ SCHEDULE START    ▼ SCHEDULE COMPLETE  
 ▲ STARTED ACTUAL    ▼ ACTUAL COMPLETE  
 █ % COMPLETE    ( ) = PERSON ASSIGNED TASK

Project Manager: Duane White

**Questions?**

**BACKUP**



Class: CPC PROCURED PARTS	
Property	<input type="checkbox"/> Item 1
Bottom Class ID -> Class Label	VALVE, BALL-NON METRIC
Catalog Number	* 10-21-0100K
Noun Name	* VALVE
Type	3-WAY BYPASS
Modifier	SCH-80
Material	* STEEL
Document ID -> Part Document ID	* 1385965_K_K_ASSY-34
Document Sort Order	1
Applicability -> Applicability	* NSSN
Standardization Code	K

LAMP Document ID to CPC Part		
Form	DEFAULT	Local
Catalog Number -> Catalog Number	Document ID -> Part Document ID	Catalog Num
211022060	MIL-F-16377/53_-_A_M16377/53-100.2	96169
211022060	MIL-F-16377_G_G1_TY-II,CL-1,SYM-100.2	96169
211022060	SC-12-4_2_2	96169
211022060	SC-76-150_1_1	96169
211022060	SC-SD1040_5_5	96169
211022060	SC-10-87V_4_4	96169
211022060	SC-60-29_16_16	96169
211022060	SC-76-87_2_2	96169

User Friendly Search

## Common Parts Catalog is:

Document to Part X-Ref



Inter-shipyard Part Equivalency

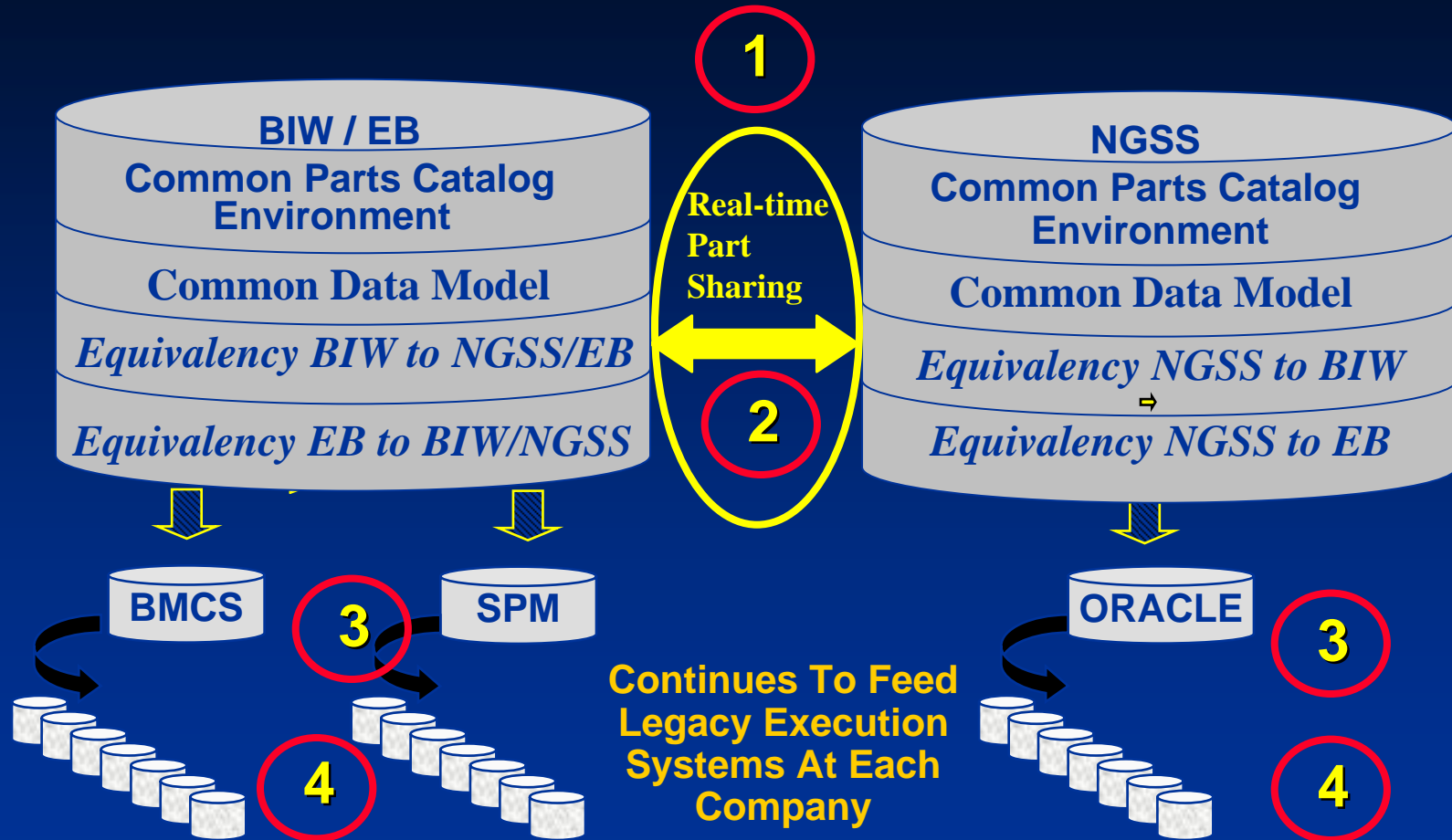
- shipyard parts catalog
- part search and retrieve repository
- shipyard, supply chain, Navy collaborator
- future business facilitator

Shipyard Part to NSN X-Ref

Power Search			
Browser View	Power Search View	Results View	
Equivalence			
Items 1 to 2 of 2			
*	Master Cat... *	Equivalent Cata...	Equivalent Catalo
<input type="text"/>	<input type="text" value="55019011"/>	<input type="text"/>	<input type="text"/>
70876	55019011	96169	24-51-0089
70876	55019011	34293	9535-DA0-648795

NSN to CPC Part		
Items 1 to 2 of 2		
Cat... *	Catalog Number... *	NSN -> NSN National Stock Number *
<input type="text"/>	<input type="text"/>	*00-725-4465
70876	14336052	4730-00-725-4465
34293	4730-DA0-139132	4730-00-725-4465

# CPC is comprised of two identical environments with “real-time” connections to enable multi-shipyard part standardization and sharing



1. 2 CPC environments
2. Real time link between environments
3. Feed to shipyard's legacy catalogs
4. Legacy catalog function unchanged

# The CPC Participating Shipyards have a history of collaboration across our shipyards

## 1999: Part Data Standards Development

- **Data Element Dictionary**
  - 256 attributes defined
- **Classification Schema**
  - 2200 categories over 8 levels
- **EVV Establishment**
  - Over 14K attribute names

## 2000: Standard Processes Development

- **Add, Change, Part and Document Procedures**
- **Document Configuration Management Procedures**
- **Part Equivalency Procedures**
- **Part Sharing Procedures**
- **Inter-shipyard Procedures**

## 2001-2003: Data cleansing to Standard Reqts

- **2M Catalog Numbers assigned to schema**
- **7.2M Document ID's linked to parts**
- **300K Inner-shipyard Equivalency Links**
- **10K Inter-shipyard Equivalency Links**
- **90K Shared Procured Catalog Numbers**

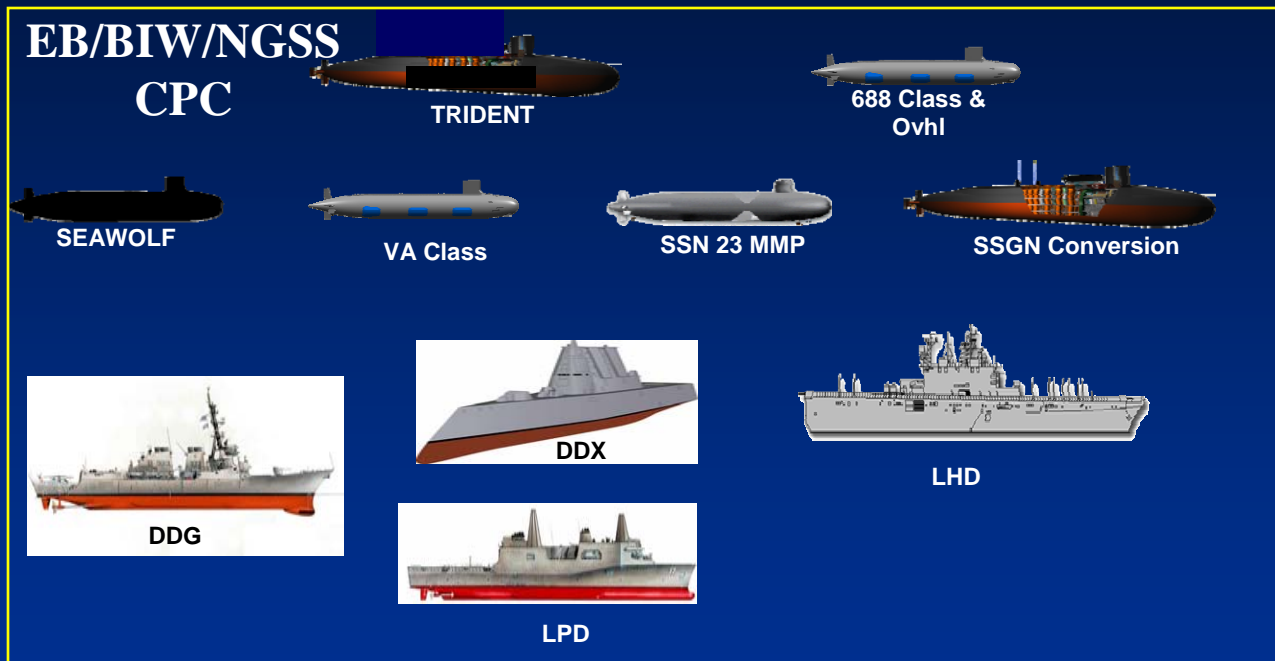
## 2004: System implementation

- **Coordinated shipyard schedules**
- **1200 Joint Test Scenarios**
- **“Real Time” System Integration**

## 2005: Central Configuration Control Group Inner and Inter-Shipyard Configuration Management Operations

- **200 CCG Change Requests to:**
  - maintain CPC synergy
  - modify system links to assure part sharing and equivalency integrity
- **Audit Program**
  - assuring quality assurance to established standards and procedures
  - audits schedule issued with shipyard rotation for performing audits
  - 9 monthly audits with a 99.7 accuracy rate

# 65% of the Navy's major combatant & supply ship's procured material are now standardized & configuration managed in CPC



**Represents  
approximately  
300K  
Procured  
Catalog Numbers**

***The Navy's Logistic Codes and Naval Shipyards are now piloting access to CPC to determine efficiencies derived from access to this catalog data***