



GENERAL DYNAMICS Electric Boat

Healthcare Provider Resource Guide

A. J. Ayers

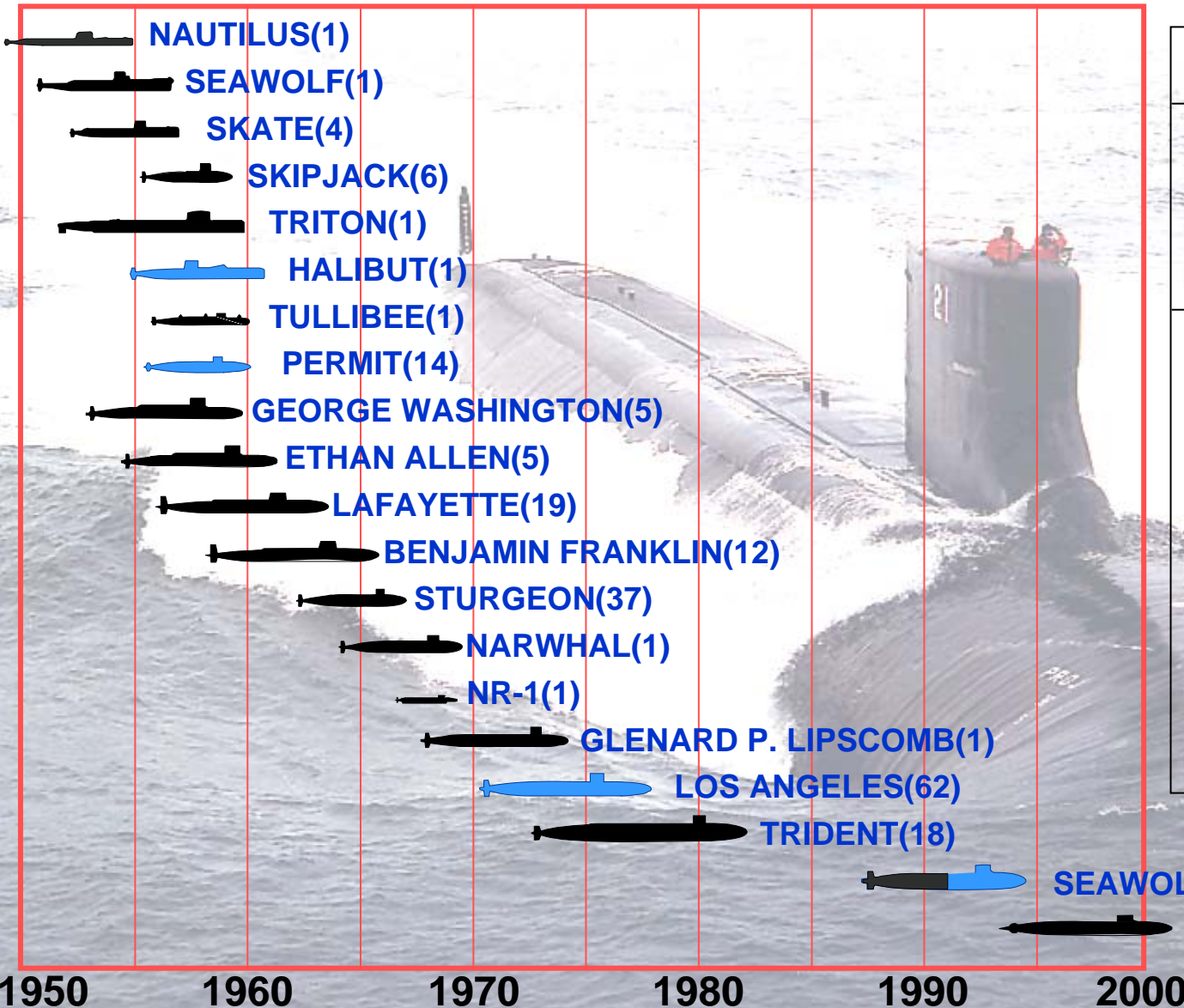
Director, Health, Wellness and Disability Benefits



Mary Valach, Sr. Workers' Compensation Analyst

Martha Davis, Sr. Workers' Compensation Analyst

October 10, 2007

Nuclear Powered Submarines



Legend	
Design	
	EB
	Other
Construction	
Electric Boat	103
GD Quincy	2
Newport News	55
Mare Island	17
Ingalls	12
Portsmouth	10
New York Ship	3

Electric Boat

Locations and Staffing

(August 2007)

- **CONNECTICUT**
 - Operations and Support 4,230
 - Engineering 3,181
- **RHODE ISLAND**
 - Quonset Point Facility 1,988
 - Newport Engineering 51
- **NEW YORK**
 - Knolls Atomic Power Lab 216
- **GEORGIA**
 - Kings Bay Trident Base 156
- **WASHINGTON**
 - Bangor Trident Base 112
 - Puget Sound NSY 32
- **WASHINGTON, D.C.** 13
- **VIRGINIA** 243
- **UK / Australia / Other** 88
- TOTAL 10,310



• **40% Union / Avg. Age = 47 / Avg. Yrs Service = 18**

Electric Boat

Quonset Point, RI Manufacturing Facility

- Multi Skilled Workforce
- Automated Manufacturing Processes
- Complex Assembly Experience
- Modular Construction Techniques
- Air, Rail, Barge Transport



Electric Boat

Groton, Connecticut Shipyard

- Manufacture Complex Components
- Land Level Hull Assembly
- Propulsion and Ship System Testing
- Sea Trials and Delivery
- Active Fleet Maintenance



Submarine Construction

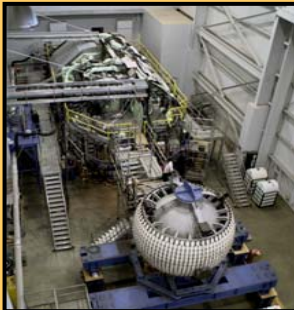
Quonset Point



Manufacturing, Assembly and Outfitting

Virginia Program ... *Prime Construction Contractor*

Groton Shipyard



CCSM Off-Hull Test Pressure Hull Complete

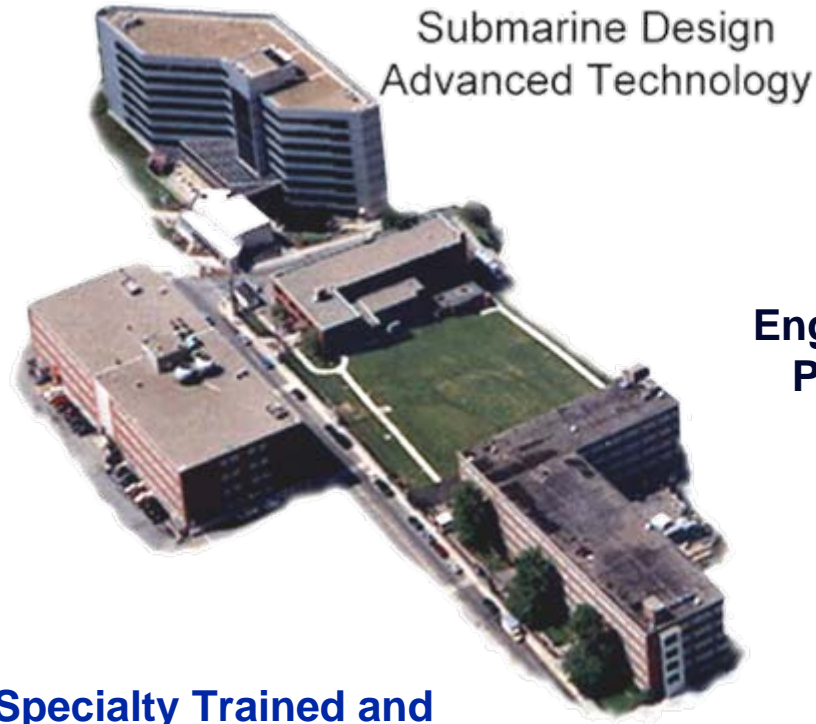
Float - Off and
Waterborne Testing

Sea Trials and Delivery

GENERAL DYNAMICS
Electric Boat

Design and Engineering

Full Spectrum of Marine Technology



Engineering Projects

Specialty Trained and Experienced Personnel

Design and Operations
Component Development
Program Management
Concept Formulation

Systems Integration
Engineering Analysis
Technology Integration
Integrated Product Environment

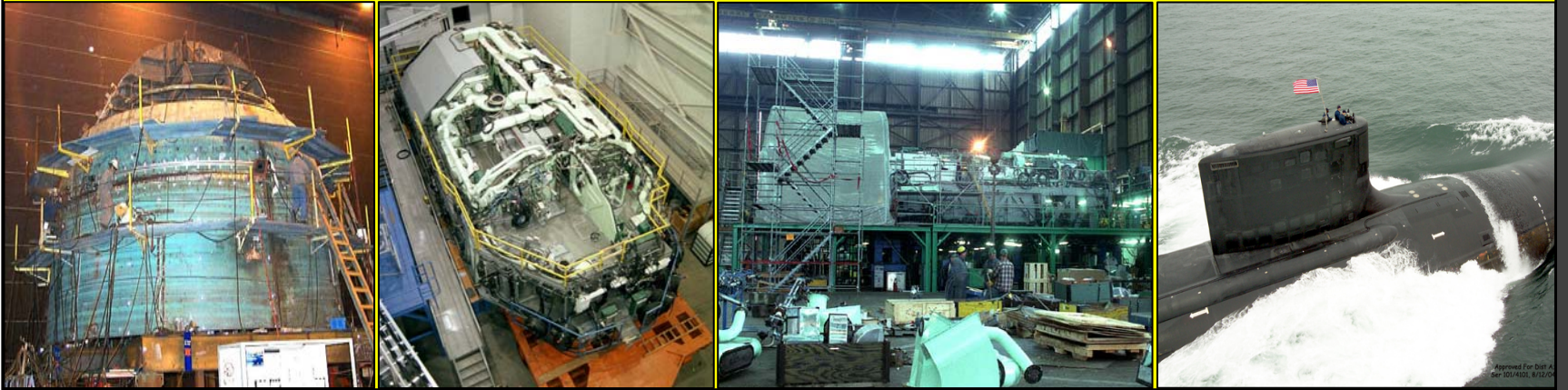


GENERAL DYNAMICS
Electric Boat

Electric Boat

Current Programs

VIRGINIA Class



SSGN Conversion



Submarine Maintenance



International



GENERAL DYNAMICS
Electric Boat

Lost Time History

(\$ 000's)

	<u>2003</u>	<u>2004</u>	<u>2005</u>	<u>2006</u>	<u>B / (W)</u> <u>2006 V</u> <u>3-YR AVG</u>
<u>GROTON</u> AVG LWD	28.3	32.0	36.7	36.9	(4.9)
<u>QUONSET</u> AVG LWD	36.2	30.5	45.5	50.4	(14.4)
<u>TOTAL</u> AVG LWD	32.3	31.3	41.1	43.7	(9.7)

Objectives

- Reduce time away from work and associated cost for occupational and non-occupational injuries and illness
- Provide the outside medical community with a better understanding of EB's workplace, employees and internal resources
- Start a dialogue with outside medical providers with regard to health and wellness of our workforce

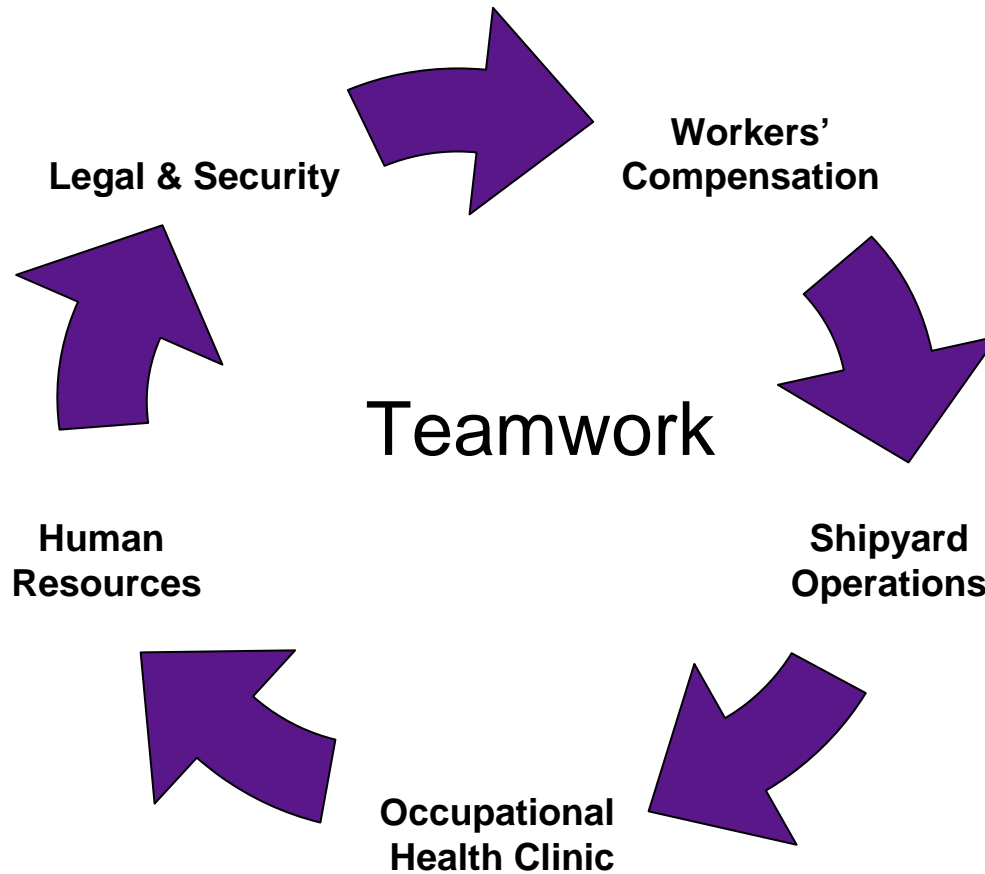
EB Medical Restricted Duty

- Governing Policies
 - SP 2-24 Medical Restricted Duty
 - SP 7-7 Treatment, Investigation and Compensation for Injury / Illness
 - Weekly review of TTD cases
 - Supervisor Training
 - Quarterly cost / claim reporting

Process Improvement Opportunities

- Increase understanding of transitional duty opportunities
 - Claimant's "self – report" no work available
- More flexibility in workforce due to labor negotiations than in past
- Reduce redundant letters from adjusters to providers
- Enhance communication between EB Workers' Compensation and Medical with outside providers
- Improve workers' compensation understanding and appreciation for what is required for various physical trades

Collaboration of Organizations



Examples

Selecting Providers

- Independent Medical Examiners
- Medical Providers of the Injured Worker
- Vocational Experts
- Functional Capacity Experts
- Providers selected based on workers' compensation spend

Meetings with Medical Providers

- EB Workers' Compensation and Medical Director
 - Overview of Modified Duty Program and Medical staff functions
 - Discussed recent health and wellness initiatives and interested health management strategy
 - Opened discussion for provider comments and concerns
-

Lost Time Performance

(\$ 000's)

	FULL YEAR <u>2006</u>	AUG YTD <u>2006</u>	AUG YTD <u>2007</u>	B / (W) 2006 V <u>2007</u>
<u>GROTON</u> AVG LWD	36.9	31.8	37.9	(6.1)
<u>QUONSET</u> AVG LWD	50.4	42.4	54.6	(12.2)
<u>TOTAL</u> AVG LWD	43.7	37.1	46.3	(9.2)