



***NAVSEA 04R  
SIC 3731 FATALITY ANALYSIS  
NSRP-SHAC Meeting New Orleans, LA***

**10 June 2009**

**Stewart Adams**

**Version 2.0**

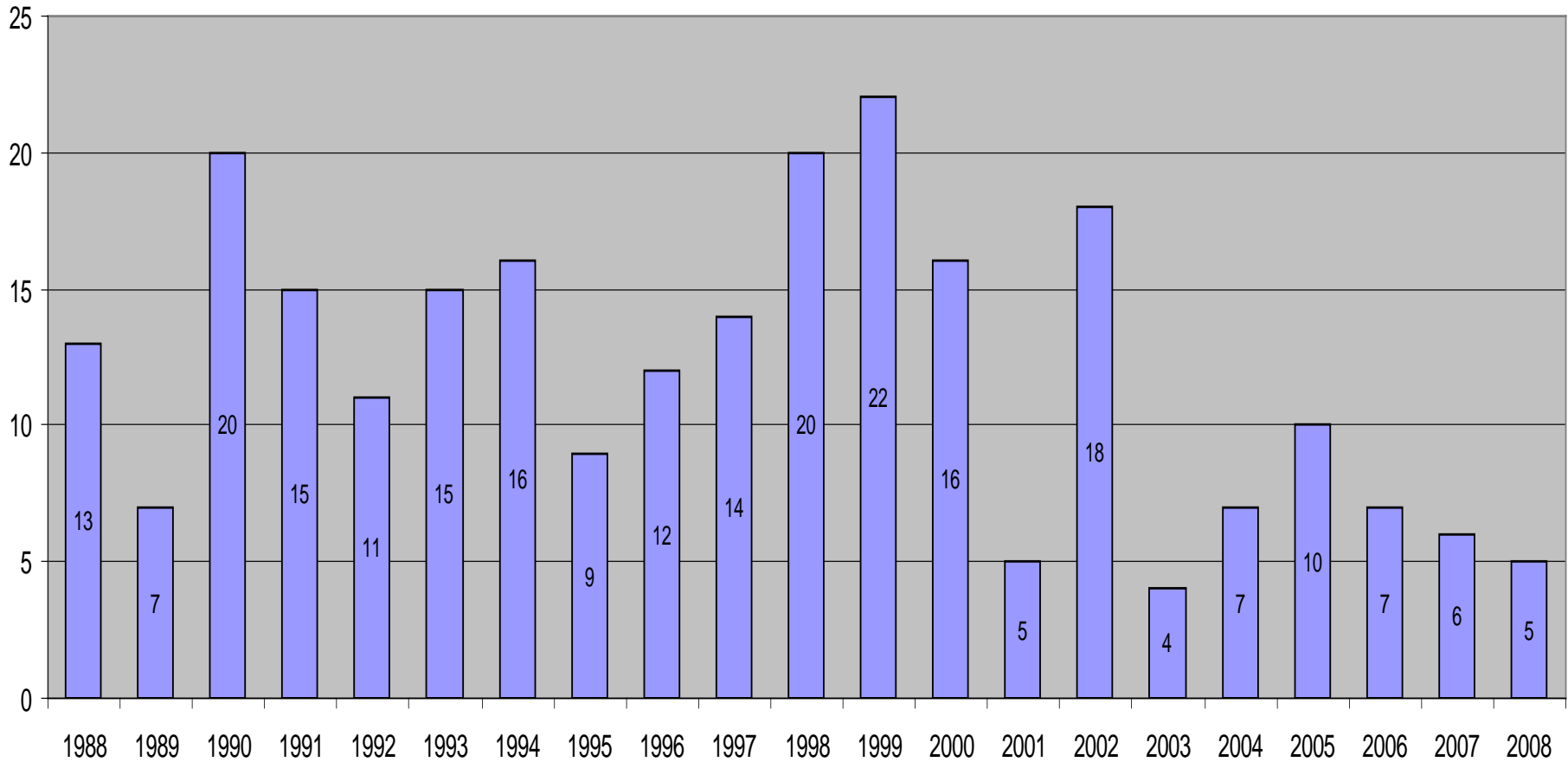
# *Background*

---

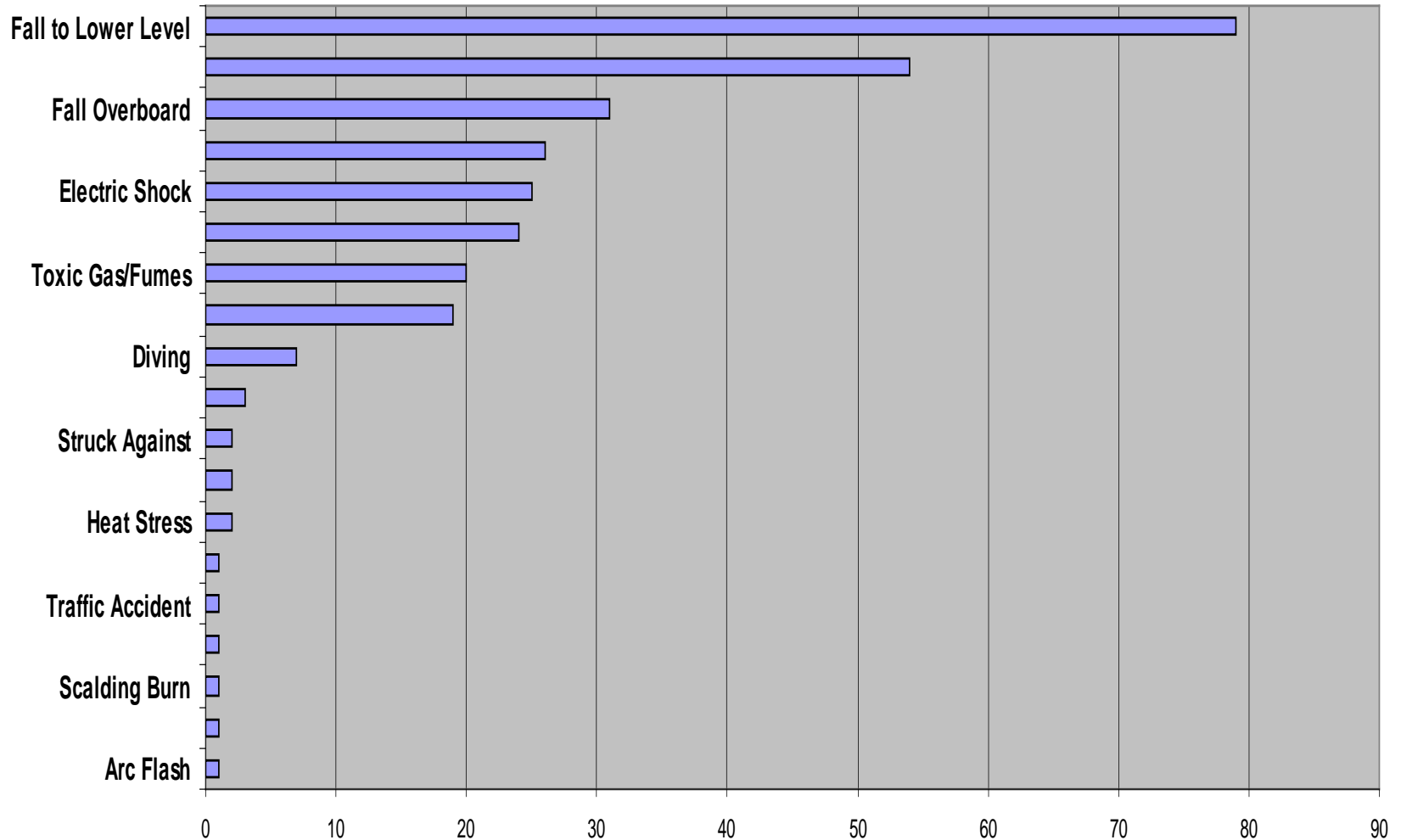
- Data is extracted from Incident Management Information System maintained by OSHA.
- Data is only for those fatalities identified as Standard Industrial Classification Shipbuilding and Ship Repair Employment (SIC 3731).
- Errors involving incorrect SIC classification were not corrected.

# FATALITIES BY YEAR

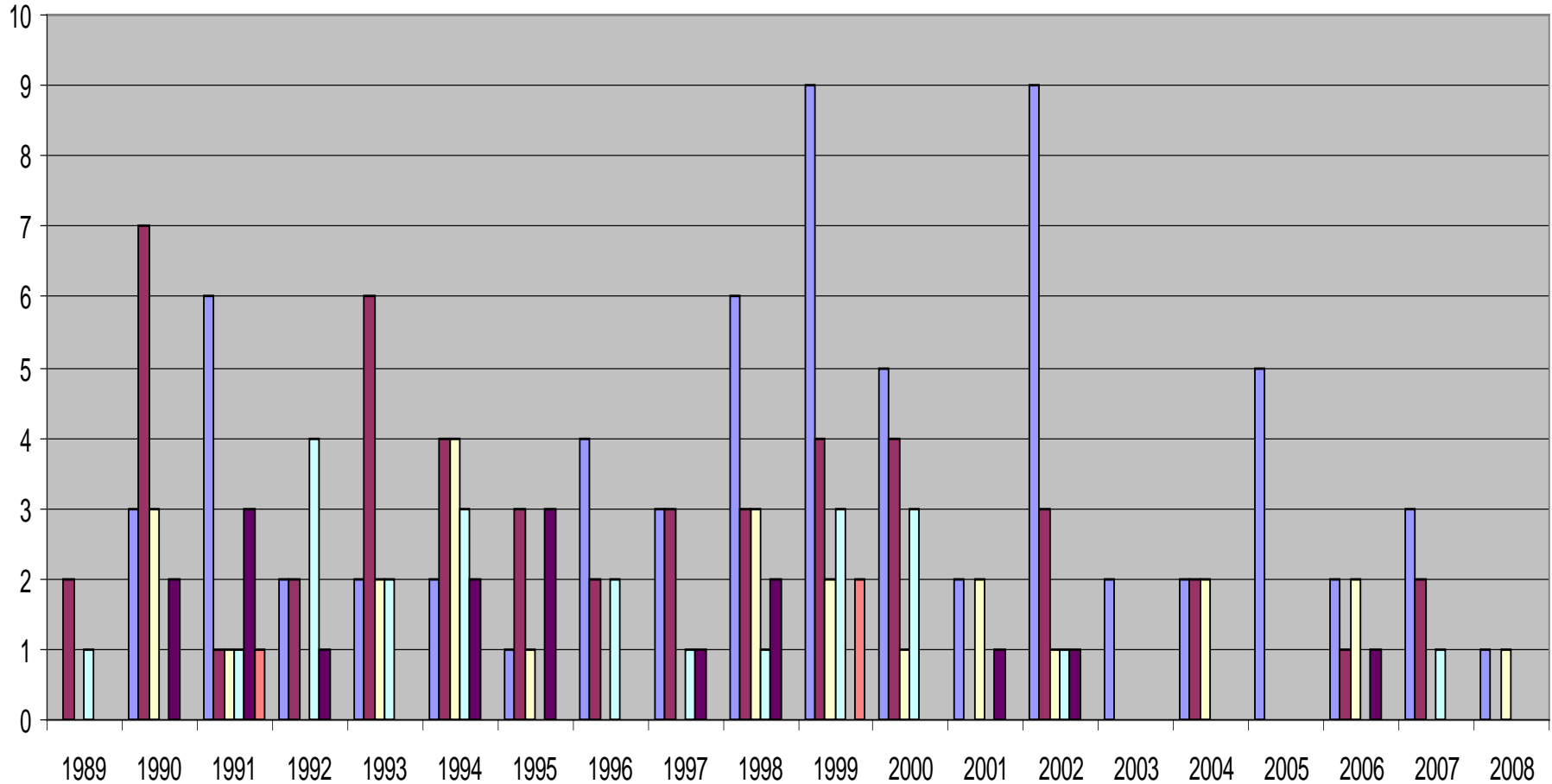
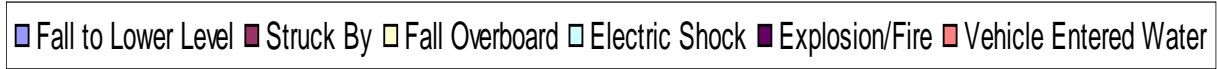
Excluding Heart Attacks



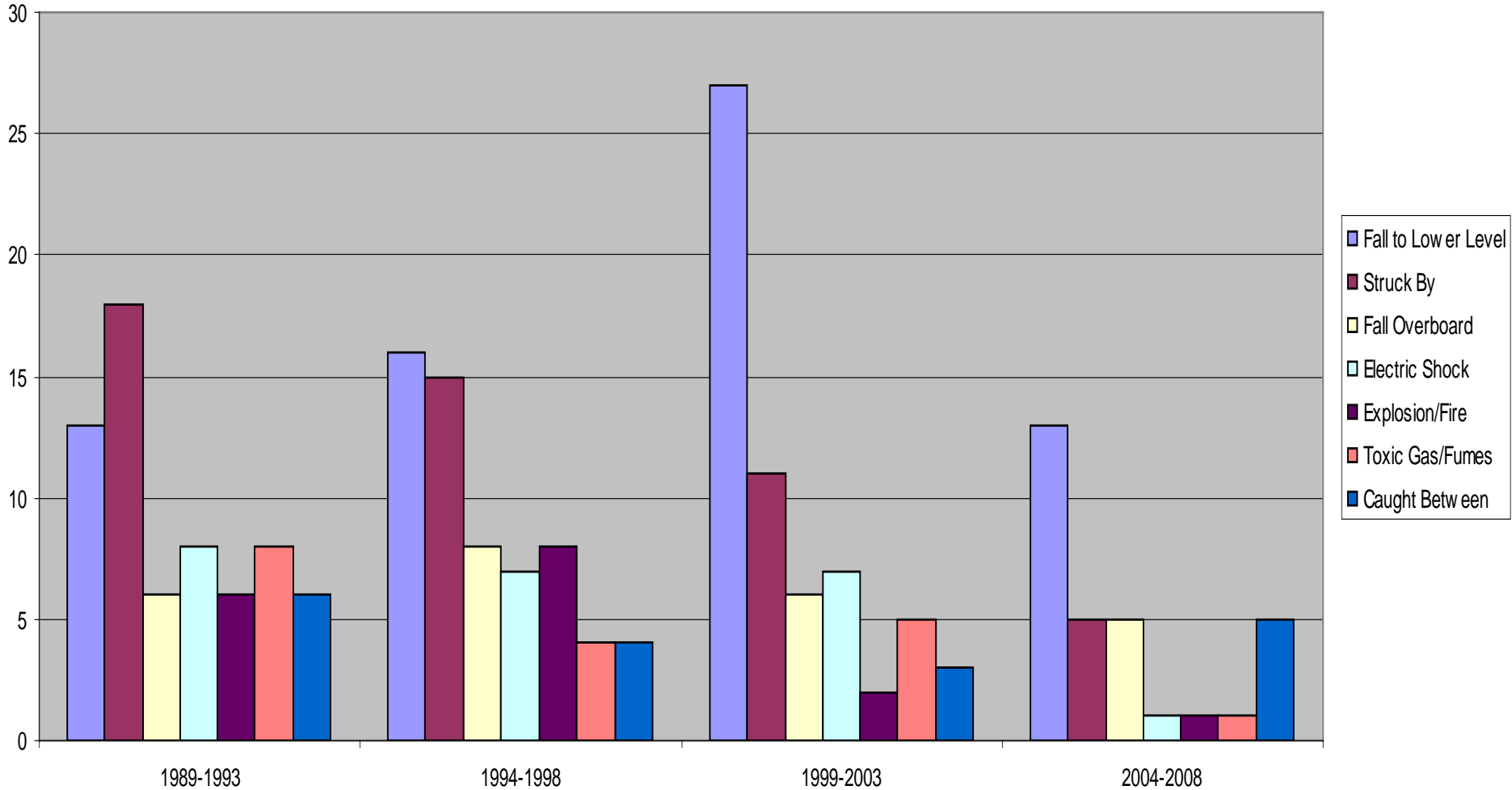
# FATALITIES BY "ACCIDENT TYPE"



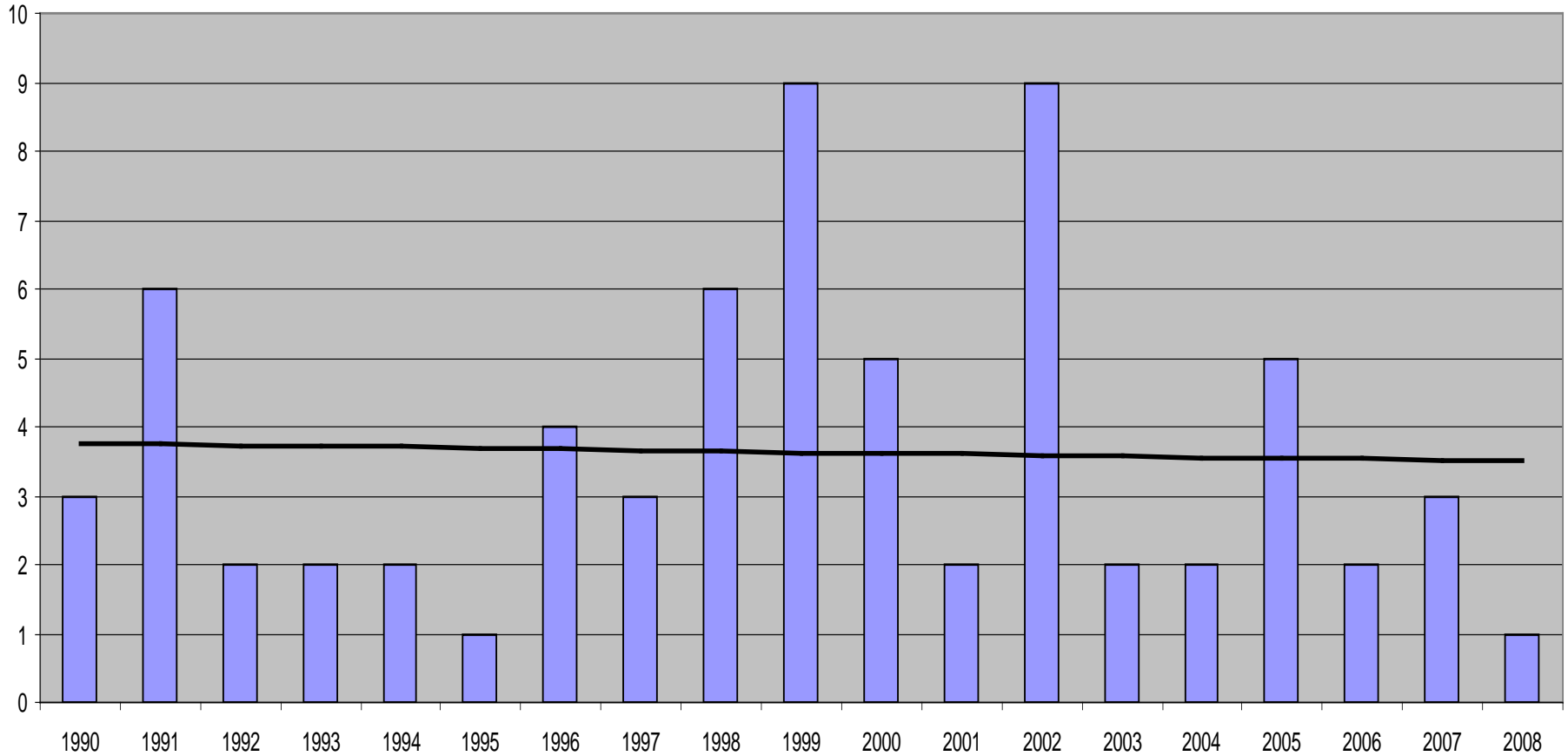
# Fatalities by Accident Types by Year



# ACCIDENT TYPES BY FIVE YEAR GROUPINGS



# "FALL TO LOWER LEVEL" BY YEAR



# ASSOCIATED NAVY HULLS

(Identified by IMIS DATABASE)  
1987 - 2008

