
Atlantic Marine Near Miss Tracking System

Yaniv Zagagi, MS, CSP
Safety & Loss Control Manager
Atlantic Marine Florida LLC.
Atlantic Marine Mayport LLC.



Agenda

- Near Miss Definition
- Why Track Near Misses?
- Process
- Form & Notification
- Tracking & Reporting
- Is it Effective?

Near Miss



Near Miss Definition

- Near miss accidents are any unplanned events or potential events, major or minor, that do not result in equipment damage, personal injury (of any kind) or death.

Why track near misses?

- Two drilling rigs, one with many recorded near misses one with a very few. Who would you like to work with?

Process

Near Miss
Corrected

- Report Submitted

Near Miss Report
Generated


- Review and trends analysis



Review by Safety
Personnel and
applicable
management

- Preventive Action Taken

Form & Notification




Safety/QA Notice

Notice Type: Near Miss Minor ION Craft Extra Effort/Best Practice

Name of Issuer: * **Employee No:**

Category:

Date: 

Time: *

Event Type: Commendation Deficiency

Impact Type: Property Personnel

Division:

Zone:

Location:

Job Number:

Ship Name:

Item Number:

Rework: Required Not Required Affecting Schedule/Contract

Identification: Customer Identified Atlantic Identified

Responsible Craft: **Supervisor:**

Employee's Name (if applicable): **EmpNo:** **Foreman:**

Witness Name(s):


Attachments:



Form & Notification

Attachments:

 Click here to attach a file

 Click here to attach a file

Root Cause Description:

PLEASE DESCRIBE THE CORRECTIVE AND PREVENTATIVE ACTION TAKEN:

COS Issued

Date of Corrective/Preventative Action:



RCCA Requested:

Yes No



Submit

Close Form

Form & Notification



Safety/QA Notice

Notice Type: Near Miss Minor ION Craft Extra Effort/Best Practice

Form No:

Name of Issuer: Employee No:

Category:

Date:

Time:

Event Type: Commendation Deficiency

Impact Type: Property Personnel

Division:

Zone:

Location:

Job Number:

Ship Name:

Item Number:

Rework: Required Not Required Affecting Schedule/Contract

Identification: Customer Identified Atlantic Identified

Responsible Craft: Supervisor:

Employee's Name (if applicable): EmpNo: Foreman:

Witness Name(s):

Attachments:



Form & Notification

Responsible Craft:

Ship Force

Supervisor:


Employee's Name (if applicable):


EmpNo:

Foreman:

Witness Name(s):

Attachments:

 Click here to attach a file

 Click here to attach a file

Root Cause Description:

On ship check it was discovered that Sf had removed safety chains and safety stanchions from hatch 4-48-2-T to enter space and did not replace safety equipment.

PLEASE DESCRIBE THE CORRECTIVE AND PREVENTATIVE ACTION TAKEN:

COS Issued

Replaced equipment and reported incident to SF CDO. CDO stated he would take appropriate action.

Date of Corrective/Preventative Action:



RCCA Requested:

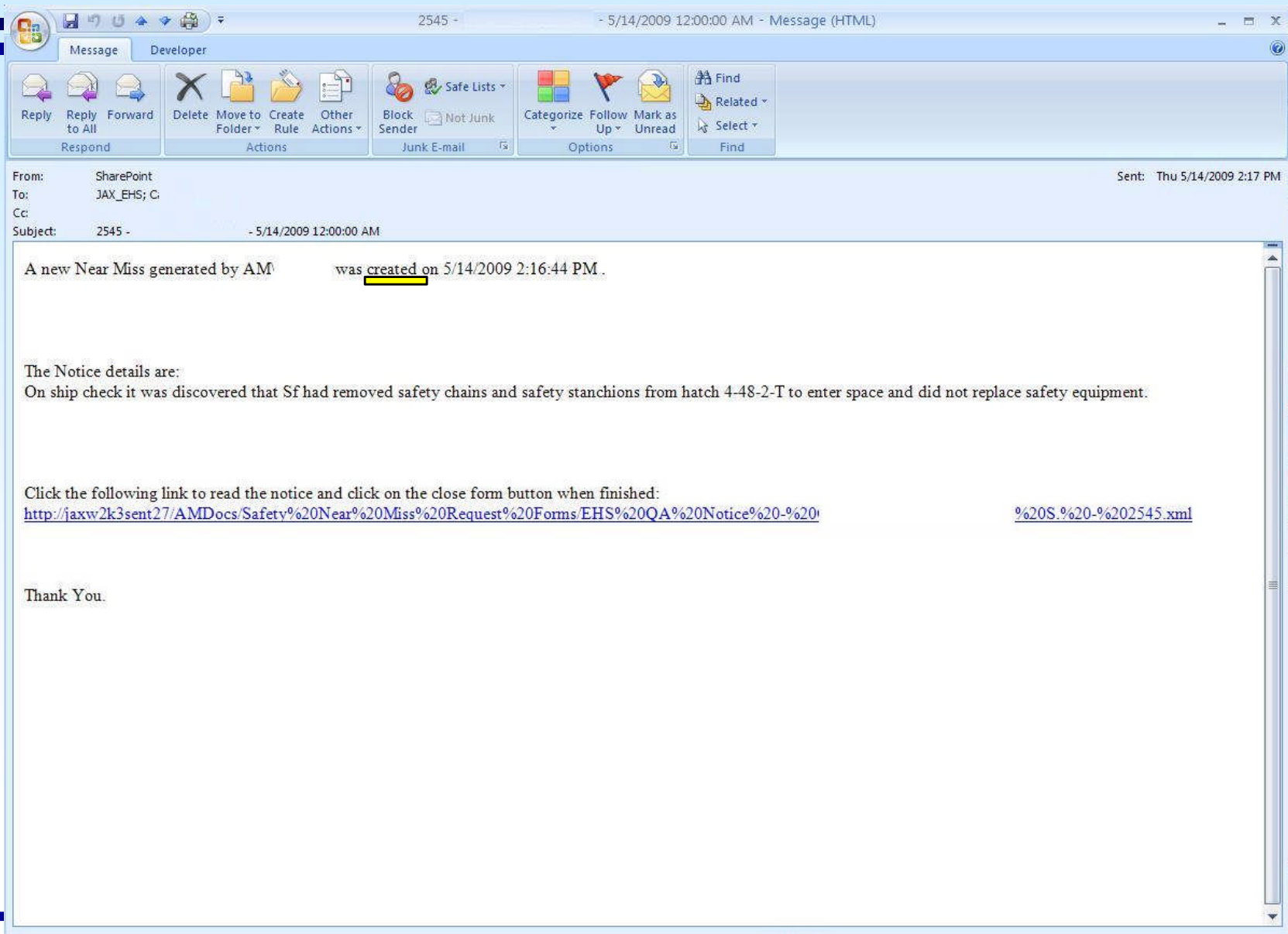
Yes No



Reviewed

Close Form

Tracking & Reporting



The screenshot shows an Outlook email window with the following details:

- From:** SharePoint
- To:** JAX_EHS; C;
- Cc:**
- Subject:** 2545 - - 5/14/2009 12:00:00 AM
- Sent:** Thu 5/14/2009 2:17 PM

The main body of the email contains the following text:

A new Near Miss generated by AM was created on 5/14/2009 2:16:44 PM.

The Notice details are:
On ship check it was discovered that Sf had removed safety chains and safety stanchions from hatch 4-48-2-T to enter space and did not replace safety equipment.

Click the following link to read the notice and click on the close form button when finished:
<http://jaxw2k3sent27/AMDocs/Safetyv%20Near%20Miss%20Request%20Forms/EHS%20QA%20Notice%20-%20%20S.%20-%202545.xml>

Thank You.

Tracking & Reporting

From: SharePoint
Sent: Friday, May 15, 2009 10:17 AM
Cc: Bedingfield, Brian
Subject: EHS QA Notice - BE I - 2549.xml

The Near Miss generated by AM on 5/15/2009 10:14:39 AM was reviewed by AM on 5/15/2009 10:17:12 AM.

The Notice details are:

Discovered a propane leak coming from a burning line fitting for the 710 unit.

Click the following link to review the notice then click on the close form button when finished:

<http://jaxw2k3sent27/AMDocs/Safetv%20Near%20Miss%20Request%20Forms/EHS%20QA%20Notice%20-%20%20-%202549.xml>



Tracking & Reporting

Near Miss Reports

WE

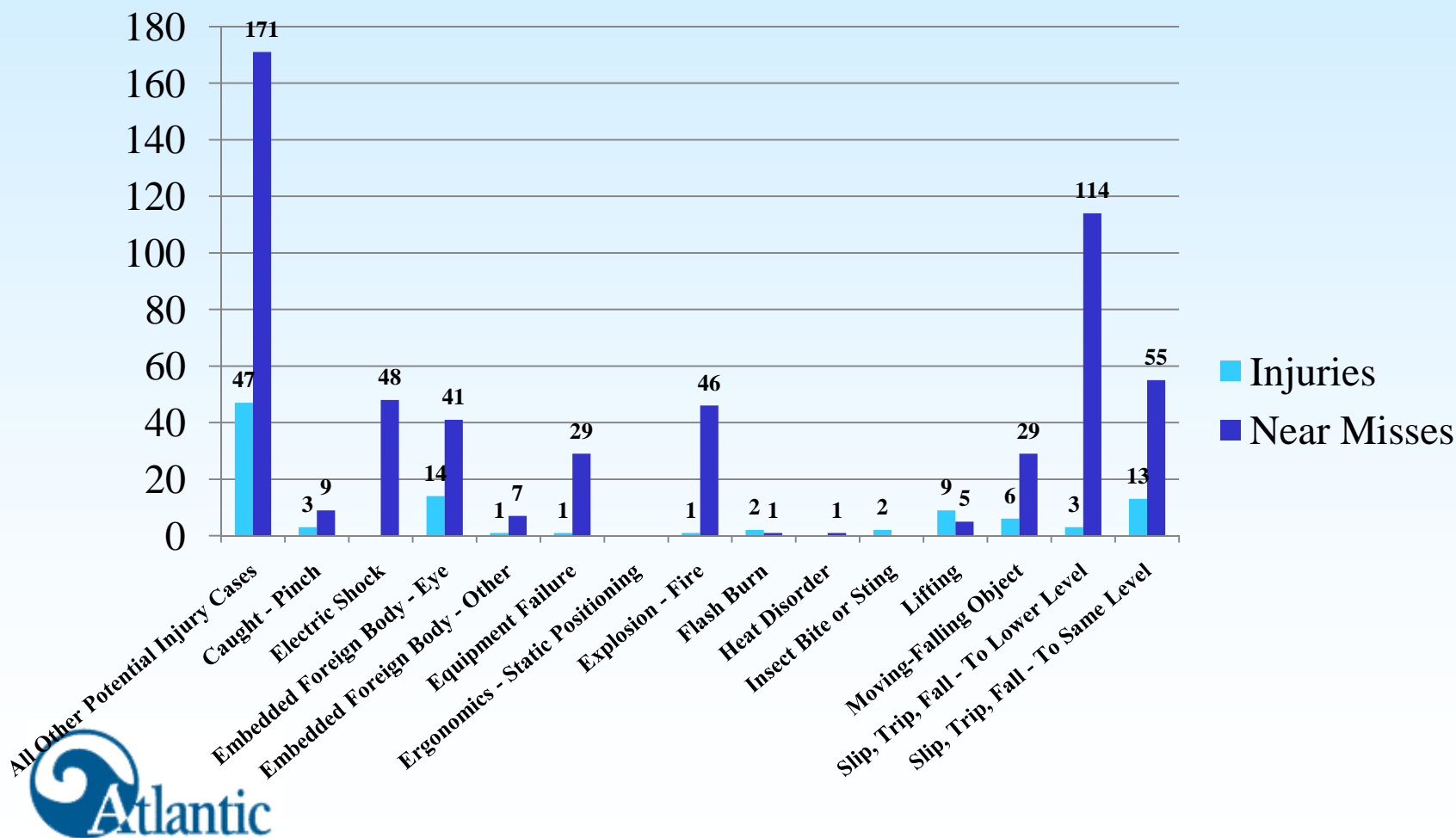
5/10/2009

No	Div	Responsible Craft	Date	Near Miss Type	Issuer Name	Zone	Location	Near Miss Root Cause	Corrective Action	COS Issued	RCCA Requested
1	08 Mayport		5/3/2009	Deficiency			82741	Trip Hazard man hole / deck plate cover w/L brackets welded on one side sitting on deck, making it unstable if walked on.	Flipped it over on flat side	No	No
2	08 Mayport	Ship Force	5/4/2009	Deficiency		Mayport-Ship	USS	On ship check it was discovered at ladder well 2-51-2-L that the safety chain for the stanchions were missing connecting hardware and were unable to attach to the stanchions.	Contacted SF 1st division who owns the space. SF made corrections to safety chains.	No	No
3	08 Mayport	Pipe	5/4/2009	Deficiency		Mayport-Ship	USS	UNATTENDED WELDING LINES NOT DISCONNECTED FROM TORCH AND MANIFOLD WHILE WORKER WENT ON BREAK IN CHT/LAUNDRY ROOM JOB (EARL).	QAT disconnected welding lines and informed craft about potential dangers.	No	No
4	08 Mayport		5/5/2009	Deficiency		Mayport-Ship	USS	On ship check it was discovered at 2-208-2-T that the safety chain was unattached to the Aux 2 escape trunk.	Reattached chain and notified SF EDO in CCS	No	No
5	08 Jax Dry Dock	Steel	4/30/2009	Deficiency		8-Sustain Area and Pier		A FIRE HOSE RUPTURE WAS REPORTED TO ME BY (STEEL SHOP LEADERMAN) . I RESPONDED TO THE RUPTURE ON THE STRONGLINE AND FOUND THE FIREMAIN TO BE SECURED TO THE BOAT. I WALKED ON BOARD AND STARTED TO REMOVE RUPTURED HOSE AND NOTICED THAT HOT WOR	REPLACED FIRE HOSE AND RESTORED FIREMAIN TO ALL STATIONS.	No	No
6	08 Jax Dry Dock	Rigging	4/30/2009	Deficiency		Jax Dry Dock-Ship		approx. 6' section of bent plate was craned onboard the '1' and workers guided it to come to rest on top of a man hole temp railing, and un-hooked the lifting strap and walked away leaving the plate on top of the safety railing. The railing isn't	workers were instructed to lay the plate on the deck and not to use safety railings as work stations.	No	No
7	08 Jax Dry Dock	Subcontractor	5/1/2009	Deficiency		8- Area and Pier		Covers had been removed from trough at numerous location on the new pier leaving the trenches open and unattended.	contacted and informed to re install the covers they had removed and Riggers corrected and installed the remaining removed covers from trough.	No	No
8	08 Jax Dry Dock	Subcontractor	5/4/2009	Deficiency		9-Sustain Dry Dock		Subcontractor () employee working RAST track on flight deck did not have on his safety glasses	Instructed employee to wear PPE	No	No
9	08 Jax Dry Dock	Subcontractor	5/4/2009	Deficiency		40-Rigging and Finger Pier	Rigging Shop	Rental forklift during preoperational check was found to have a cylinder not working properly and when the machine was tilted it would lift the front wheel off the ground.	Forklift was tagged out of service and rental company contacted to replace or make repairs.	No	No
10	08 Jax Dry Dock	Steel	5/4/2009	Deficiency		Jax Dry Dock-Ship	83533 USS	While conducting space walkthrough, I noticed a deck plate leading to Auxiliary Machinery Room #3 was left open. There was no fall protection around the deck plate.	I lowered the deck plate. Personnel were briefed as to proper procedures when opening/closing deck plates and the importance of fall protection.	No	No
11	08 Jax Dry Dock	Sheet Metal	5/4/2009	Deficiency		40-Rigging and Finger Pier		Employee was not wearing goggles while working onboard the Strongline, he said they were fogging up.	It was explained that goggle must be worn to prevent eye injuries. Employee was issued a COS and sent home for the day.	Yes	No
12	08 Jax Dry Dock	Subcontractor	5/4/2009	Deficiency		Jax Dry Dock-Ship	83533 USS	Electrical power cable going though WTH 1-140-1 missing chafing material	placed chafing material around power cable	No	No
13	08 Jax Dry Dock	Steel	5/4/2009	Deficiency		Jax Dry Dock-Ship		Steel shop working on 5-292-1-W in AM3 placed ventilation sock in 1-325-2 QAES. Blank was not properly placed in QAES	Notified Carpenter lead person to add an additional blank to scuttle. Also notified Steel supervisor	No	No
14	08 Jax Dry Dock	Subcontractor	5/4/2009	Deficiency		8-Sustain Area and Pier	Bk/hd East Of Sustain	While was setting up the equipment on the deck, there was a pipe on the hopper that had not been blocked off and was dropping sand all over the deck.	Immediately contacted the supervisor for I and he was able to block the pipe and fix the issue. He later proceeded to clean up all the area that had spill sand, in order to avoid a slip trip or fall.	No	No
15	08 Jax Dry Dock	Ship Force	5/5/2009	Deficiency		Jax Dry Dock-Ship	83533 USS	During the morning safety walk onboard USS it was noticed that ship's force had not installed safety stanchions leading into aft steering. The hatch supports are in place but their current position makes it difficult to grab onto them unless a	Ship's force directed to install safety stanchions.	No	No
16	08 Jax Dry Dock	Subcontractor	5/5/2009	Deficiency		Jax Dry Dock-Ship	83533 USS	While conducting routine walk through on USS I noticed employees from were working without wearing PPE (hard hats and eye protection).	notified they need to wear proper PPE while working onboard.	No	No



Tracking & Reporting

Injuries Vs. Near Miss By Category

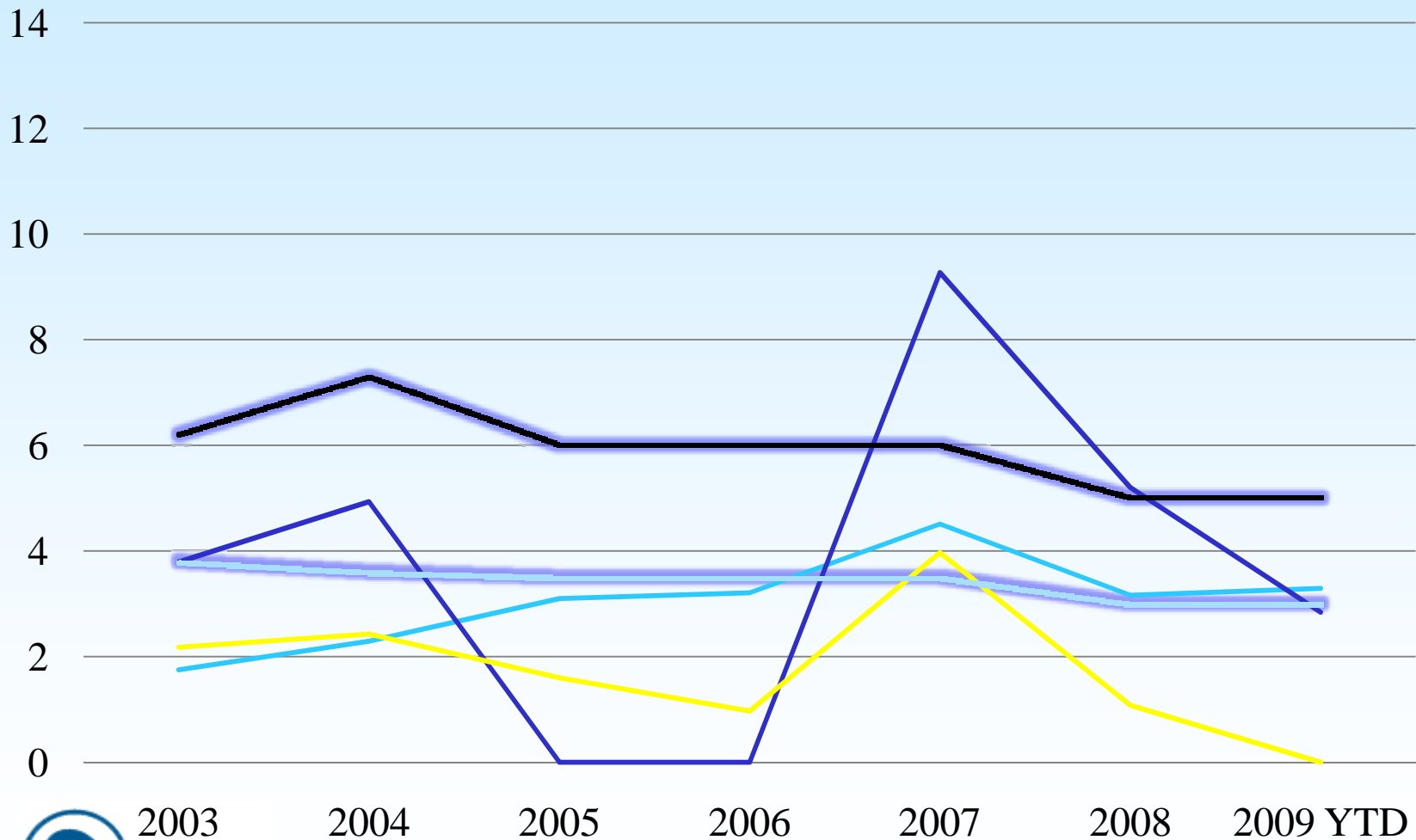


Is it effective? - Numbers

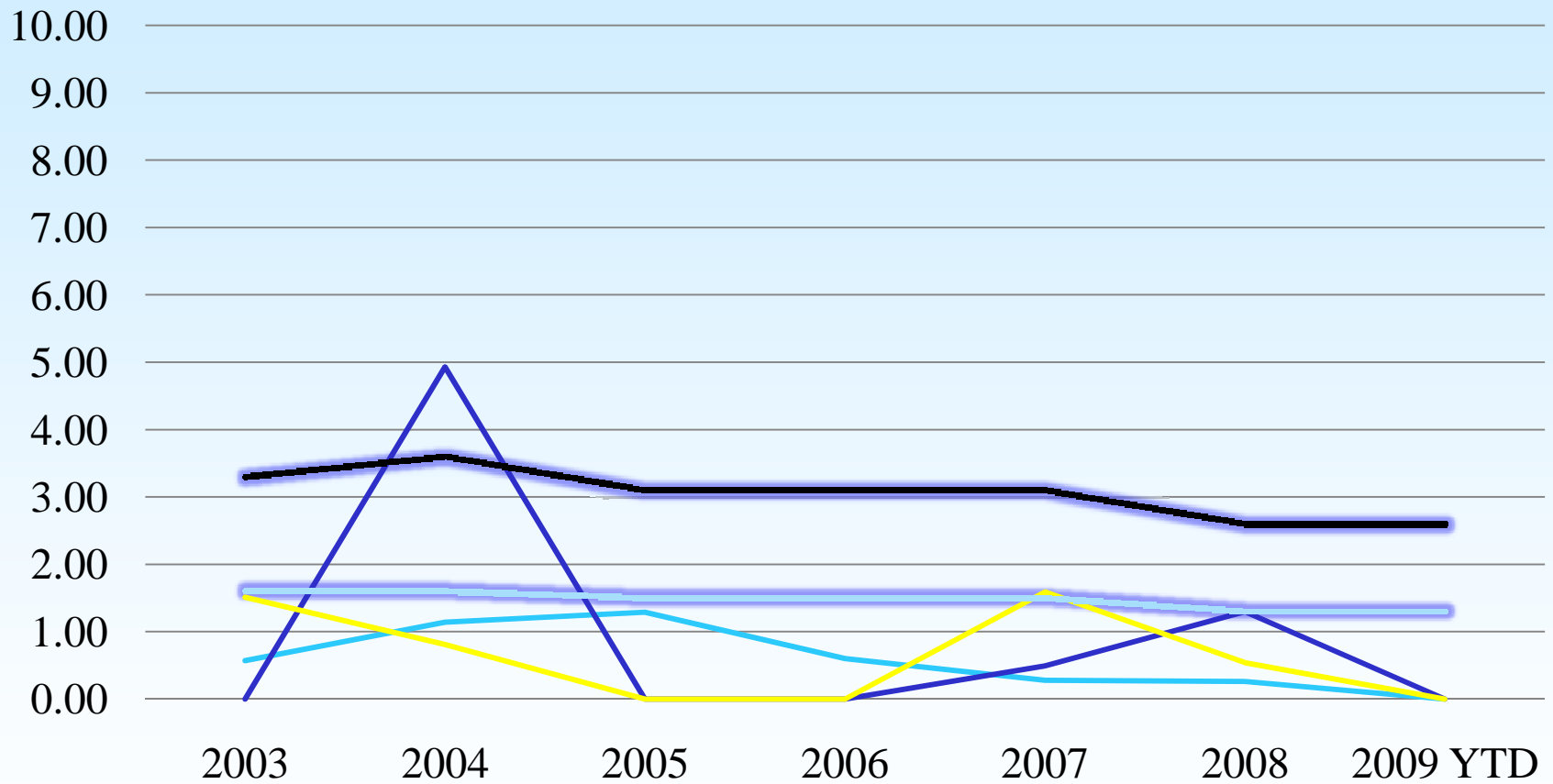
- More than 700 Near Misses submitted YTD
- All Craft Participating
- 116 Employees Submitted Near Misses, not just management!



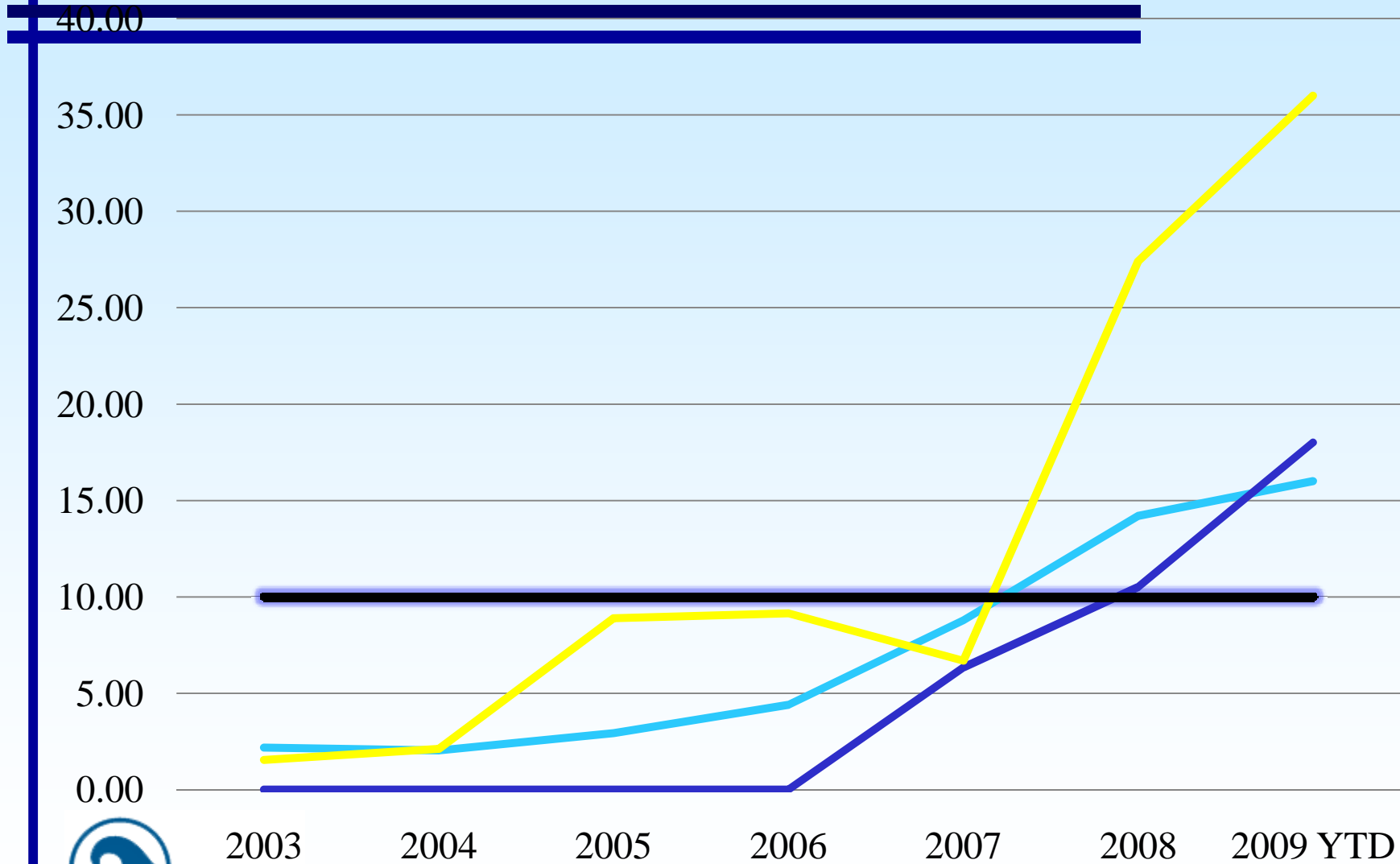
Is it effective? – Rates - DART



Is it effective? – Rates – Lost Time



Is it effective? – Rates – Recordable / Near Miss



Questions?

