

# **Facilities, Tooling and Risk Management Panel**

---

## **Interplay of Workers' Compensation and Other Benefit Delivery Programs**

**May 20, 2010**

# Agenda

---

- **Healthcare Reform – How might it impact WC?**
- **Discuss business unit organizational structure**
- **Review other programs and policies affecting workers' compensation claim administration**
- **Q&A**

# Welcome to “Obama Care”



*“Give it to me straight, Doc.  
How long do I have to ignore your advice?”*

# Healthcare Reform

## Key Provisions that May Affect WC

---

- **Access to basic healthcare for all Americans**

- ↗ Additional strain on shortage of medical providers in some regions
  - May delay scheduling of IME's
  - May impact quality of care due to time constraints with patients

- **Pharmacy (2011)**

- ↗ New annual fees on pharmaceutical manufacturers
  - Additional cost passed on to other payers
- ↗ Medicare Part D drug discounts –
  - drug manufacturers required to provide a 50% discount to Medicare Part D beneficiaries on brand name drugs

- **Tax on medical device manufacturers (2013)**

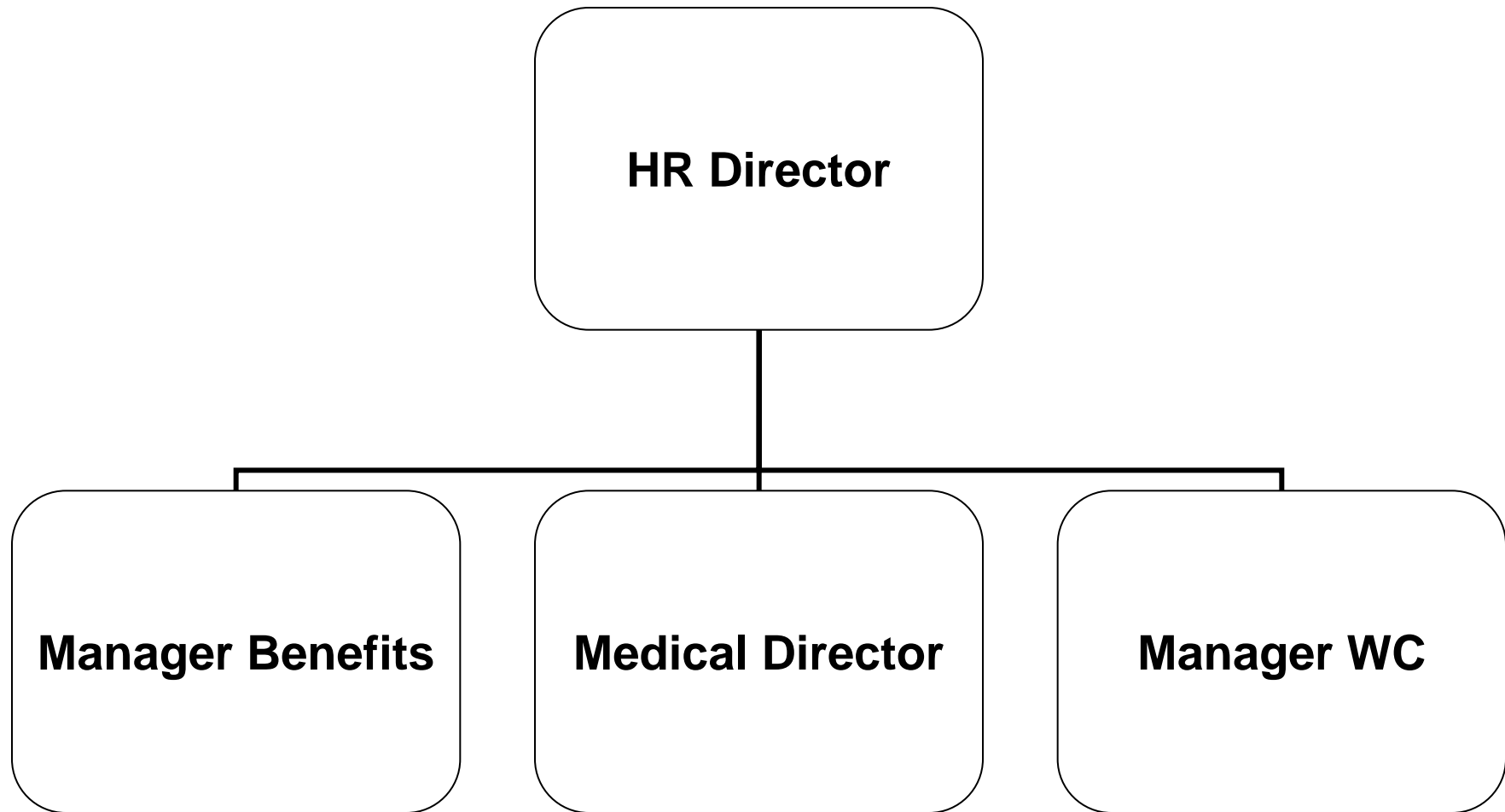
- ↗ Excise tax of 2.3% on the sale of medical devices
  - Additional cost passed on to other payers

- **Future of group benefit offerings by employers given many onerous reporting and administrative provisions**

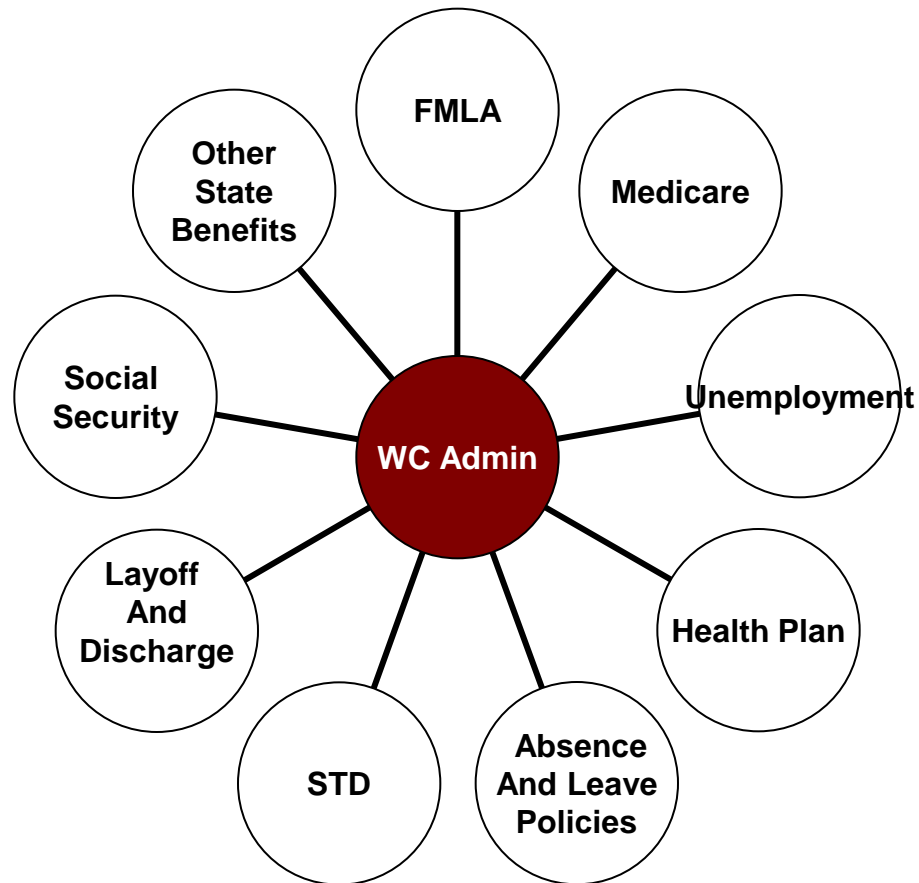
- ↗ Workers' compensation claims may become more prevalent

# Disability Management Organizational Structure - EB Model for Discussion

---



# Many Interfaces...



# Technological Breakthroughs Drive Up the Cost of Healthcare!

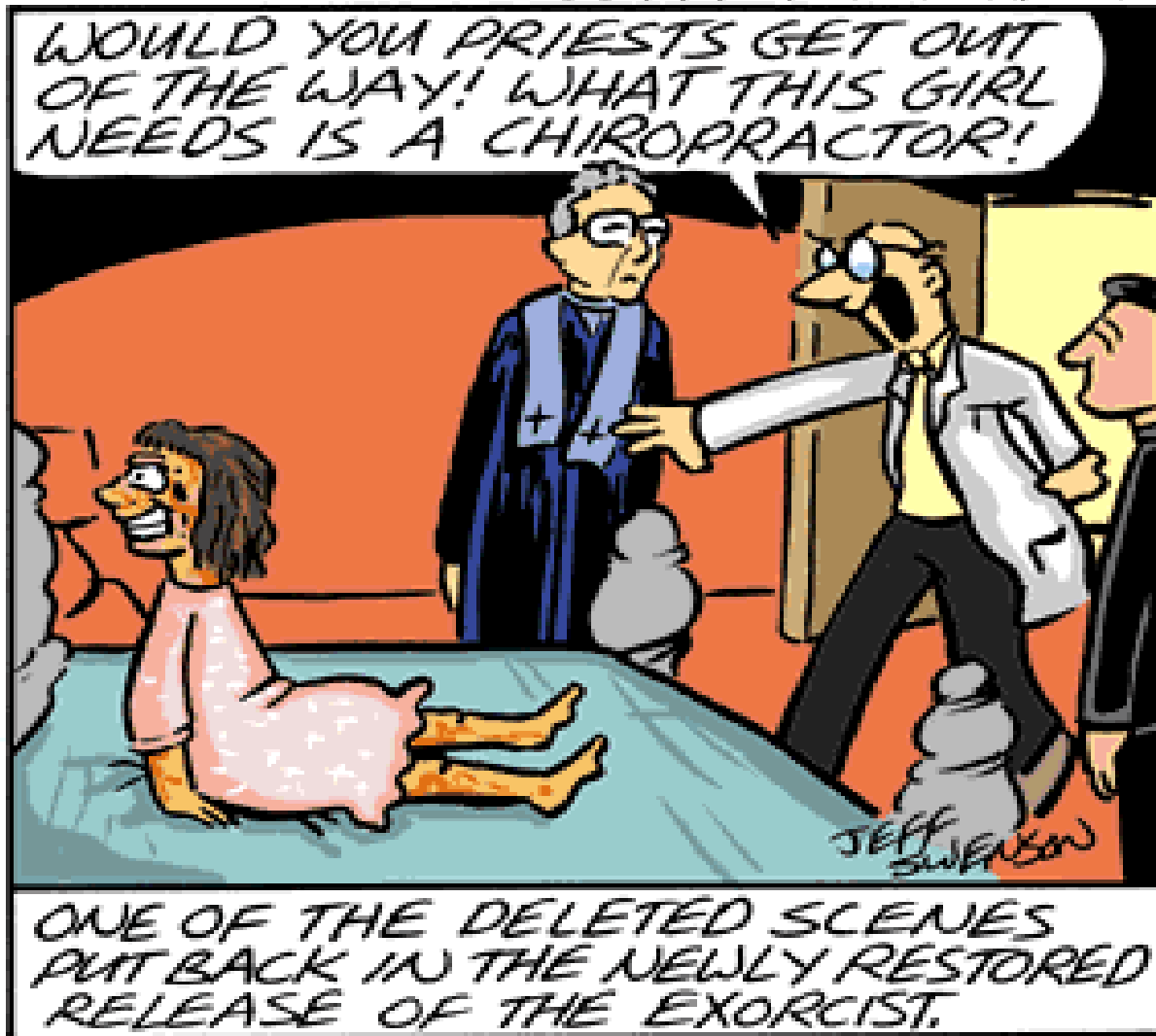
Copyright 2001 by Randy Glasbergen. [www.glasbergen.com](http://www.glasbergen.com)



**“It’s a new procedure. We can surgically implant tiny detour signs so food won’t go to your thighs.”**

# The Right Level of Care at the Right Time!!

FRENETIC WANDERINGS [WWW.SWENSONFUNNIES.COM](http://WWW.SWENSONFUNNIES.COM)



# Questions

---

